

2004 MARKETING YEAR

Having knowledge of accurate past and current marketing information can assist beef cattle producers in making management decisions in their operations. The USDA Market News Service, St. Joseph, MO, provides numerous reports for various markets throughout the US. One report, "5 Area Weekly Weighted Average Direct Slaughter Cattle," reports marketings, weights, and prices of feedlot cattle from Texas/Oklahoma, Kansas, Nebraska, Colorado, and Iowa/Minnesota. The report covers steers and heifers that were marketed on a live or dressed basis. The report is updated weekly and covers the previous week's marketings. A summary is provided showing the most recent week, last week, and year ago data.

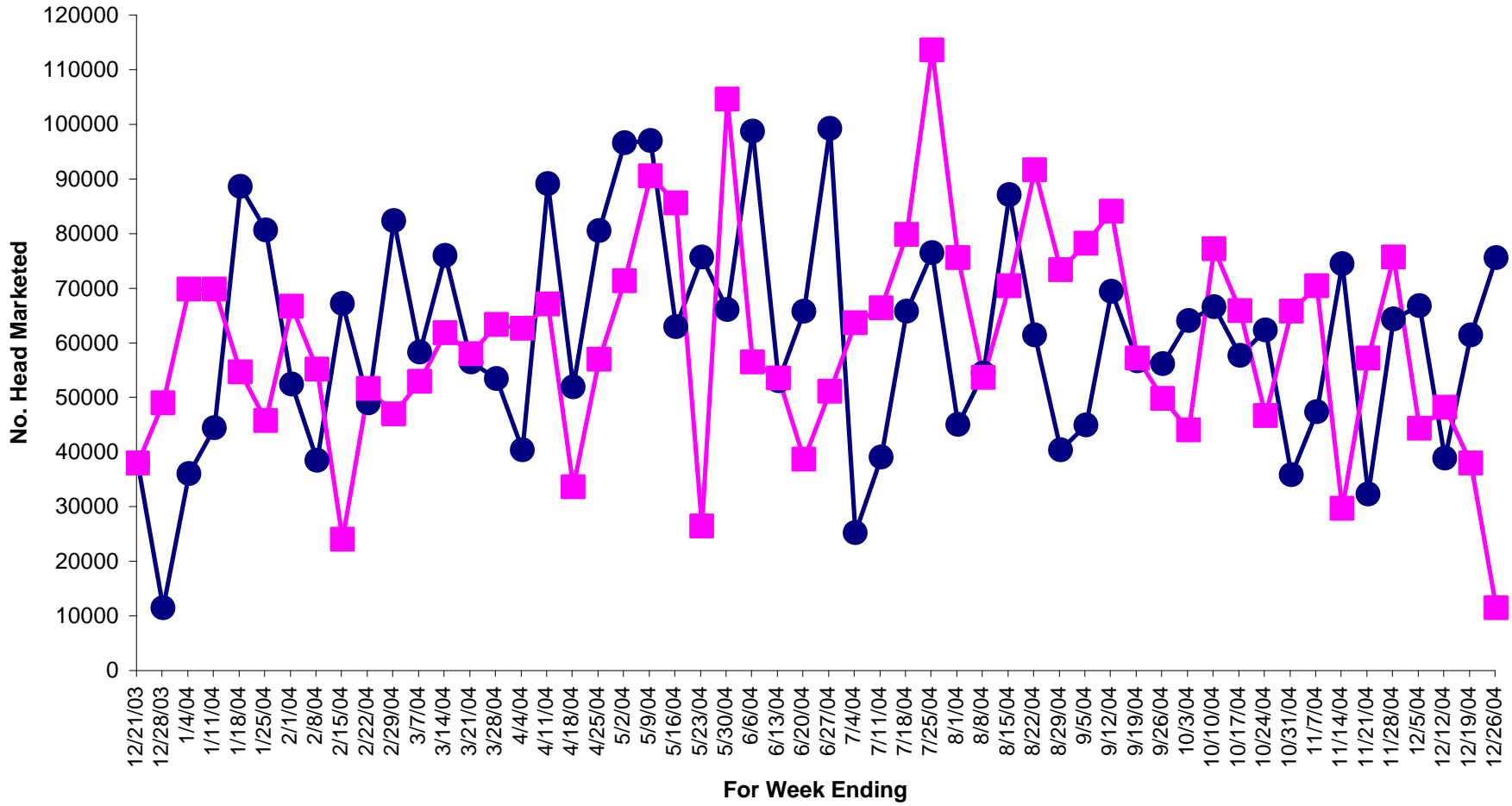
The information used for this web page utilizes the summary data. Charts are provided for number head marketed, live and dressed weights, and prices. For the 2004 marketing year, charts begin with the week ending December 21, 2003. This just preceded the announcement on December 23, 2003 of the first confirmed case of BSE in the United States. The charts include weekly data through the week ending December 26, 2004. The numerical data used in the charts is also available in table form.

The weekly USDA report contains detailed information relating to percentage of choice grade cattle, numbers, weights, and prices. For the detailed report, go to http://www.ams.usda.gov/mnreports/lm_ct150.txt.

Other reports which are available include:
"5 Area Weekly Weighted Average Direct Slaughter Cattle - Premiums and Discounts" at http://www.ams.usda.gov/mnreports/lm_ct169.txt
"National Weekly Direct Slaughter Cattle - Premiums and Discounts" at http://www.ams.usda.gov/mnreports/lm_ct155.txt
"Eastern Cornbelt Direct Feeder Cattle Summary" at http://www.ams.usda.gov/mnreports/gx_LS161.txt.
Many more reports can be accessed from the USDA Agricultural Marketing Service's Livestock and Grain Market News web site at <http://www.ams.usda.gov/lsmnpubs/>.

Number Head Marketed Steers, Live FOB

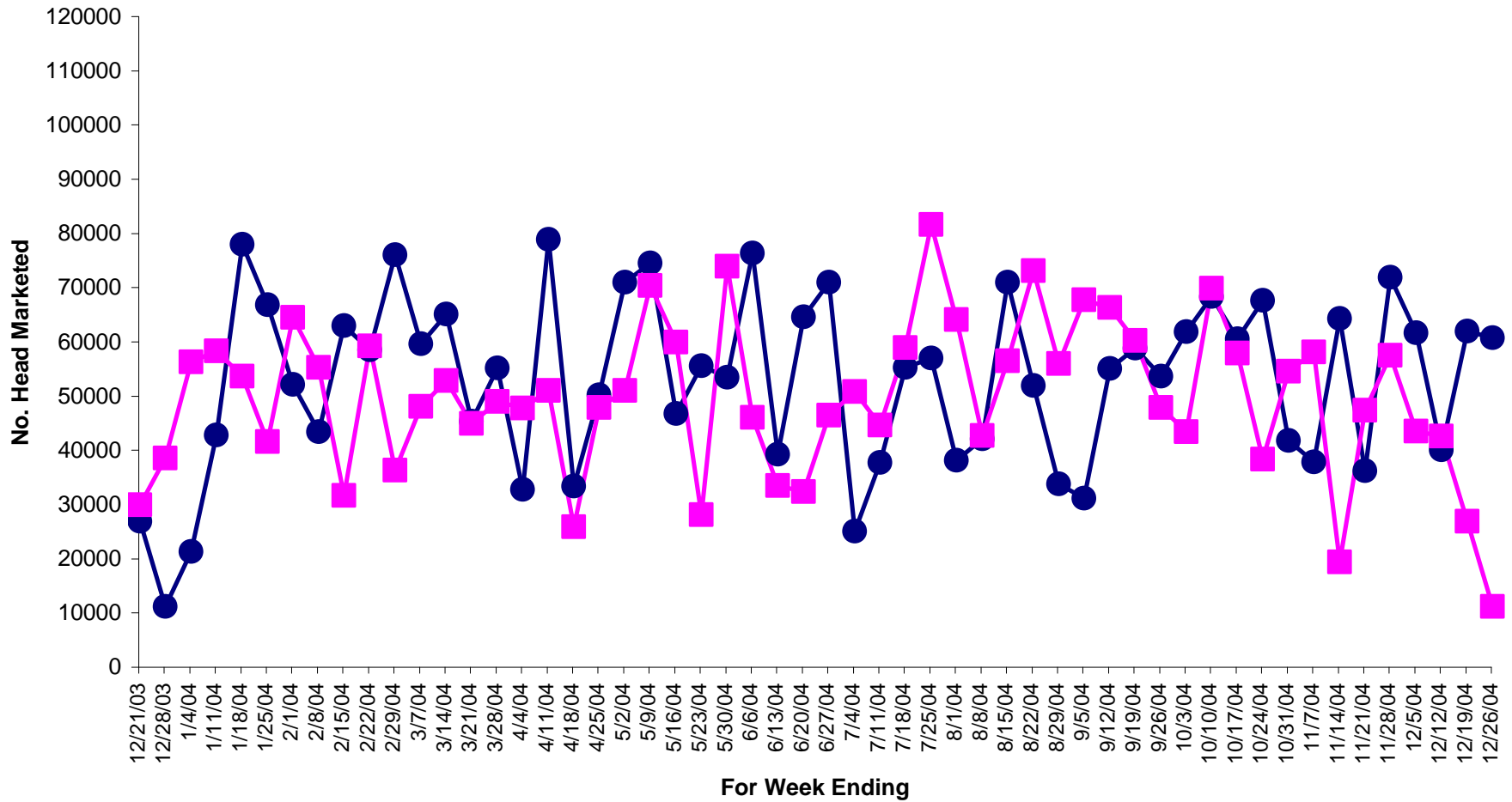
—●— This Year —■— Year Ago



Source: 5 Area Weekly Weighted Average Direct Slaughter Cattle (Texas/Oklahoma, Kansas, Nebraska, Colorado, Iowa/Minnesota feedlots), USDA Market News Service.

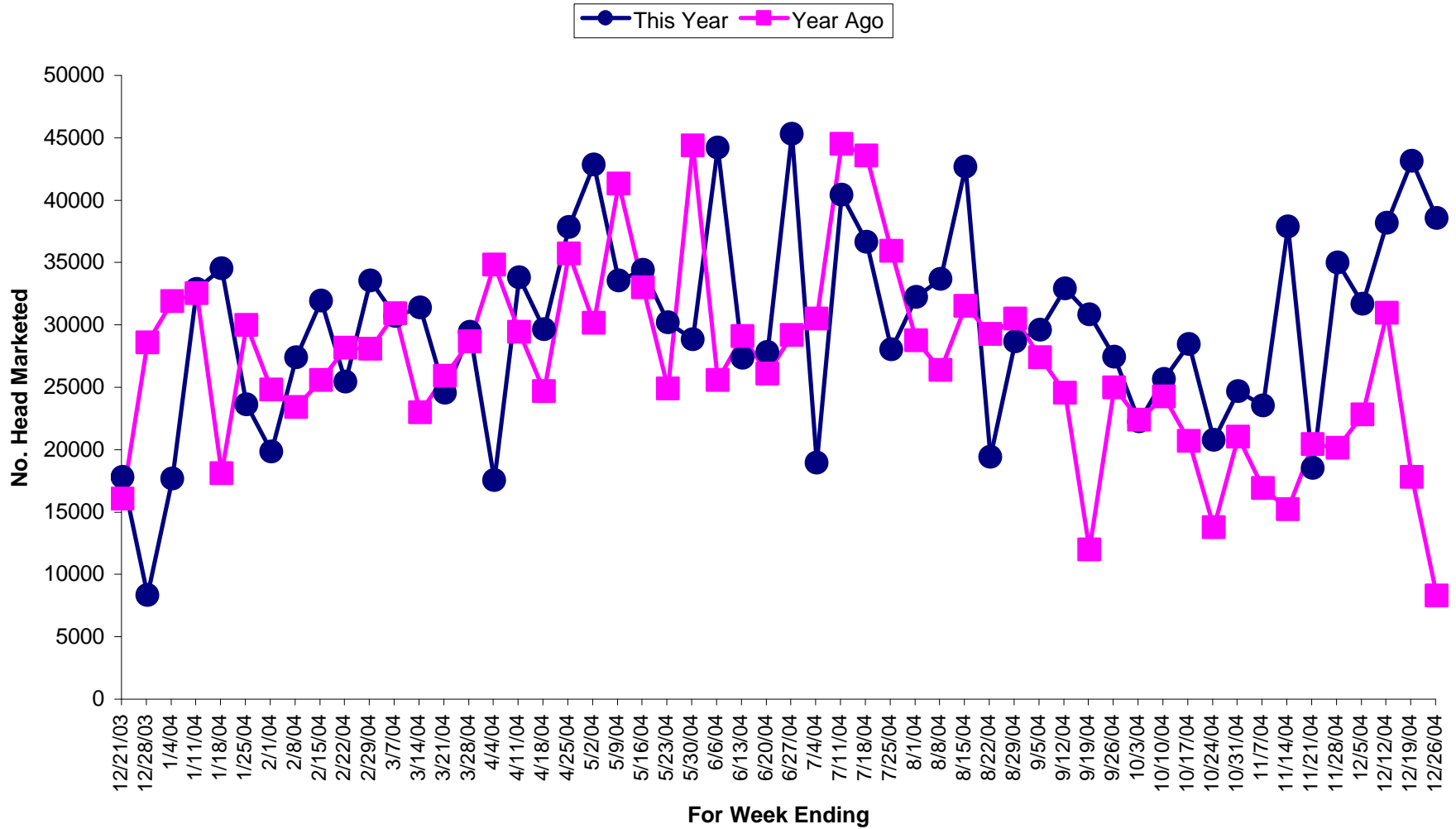
Number Head Marketed Heifers, Live FOB

● This Year ■ Year Ago



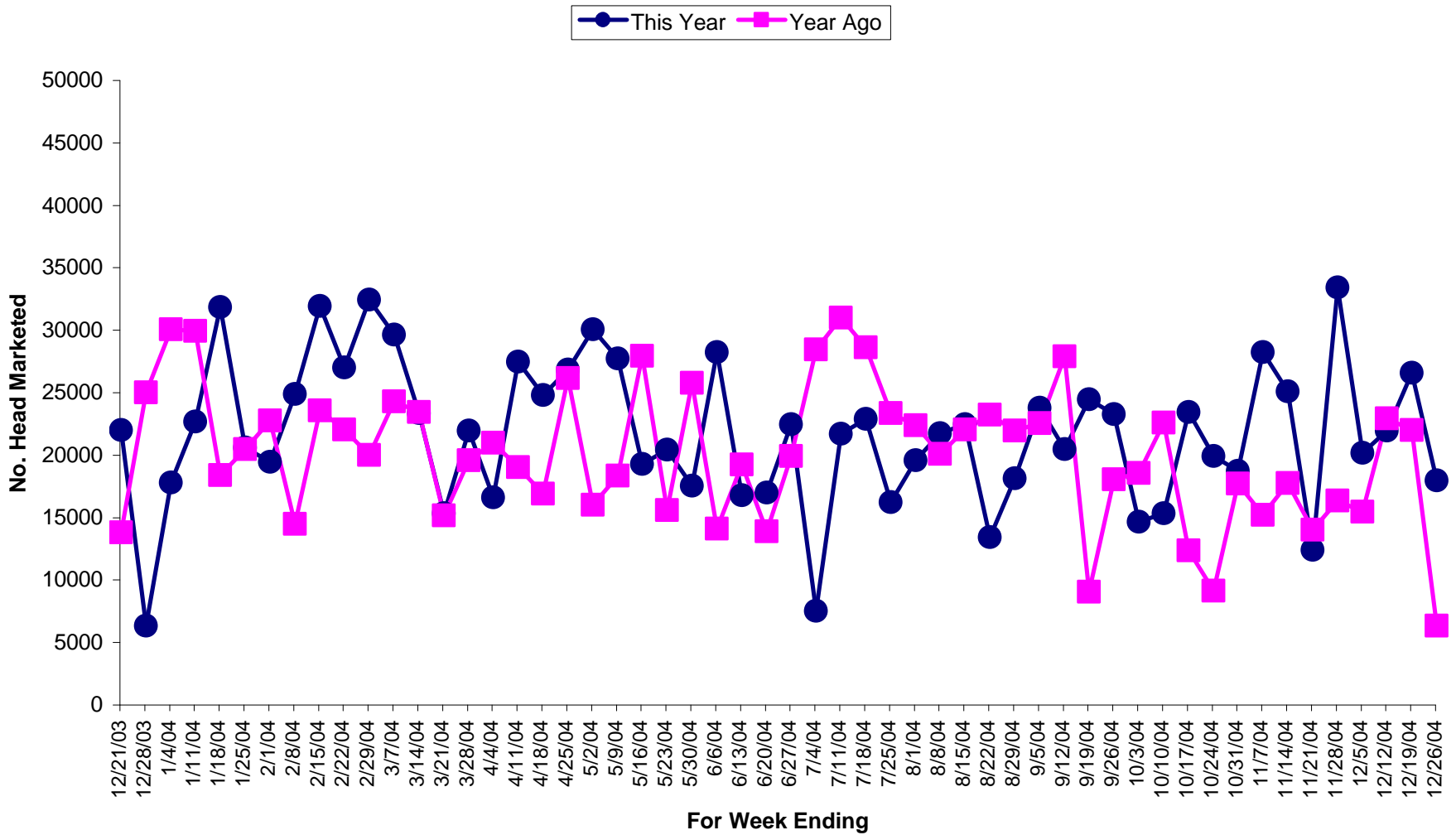
Source: 5 Area Weekly Weighted Average Direct Slaughter Cattle (Texas/Oklahoma, Kansas, Nebraska, Colorado, Iowa/Minnesota feedlots), USDA Market News Service.

Number Head Marketed Steers, Dressed Delivered



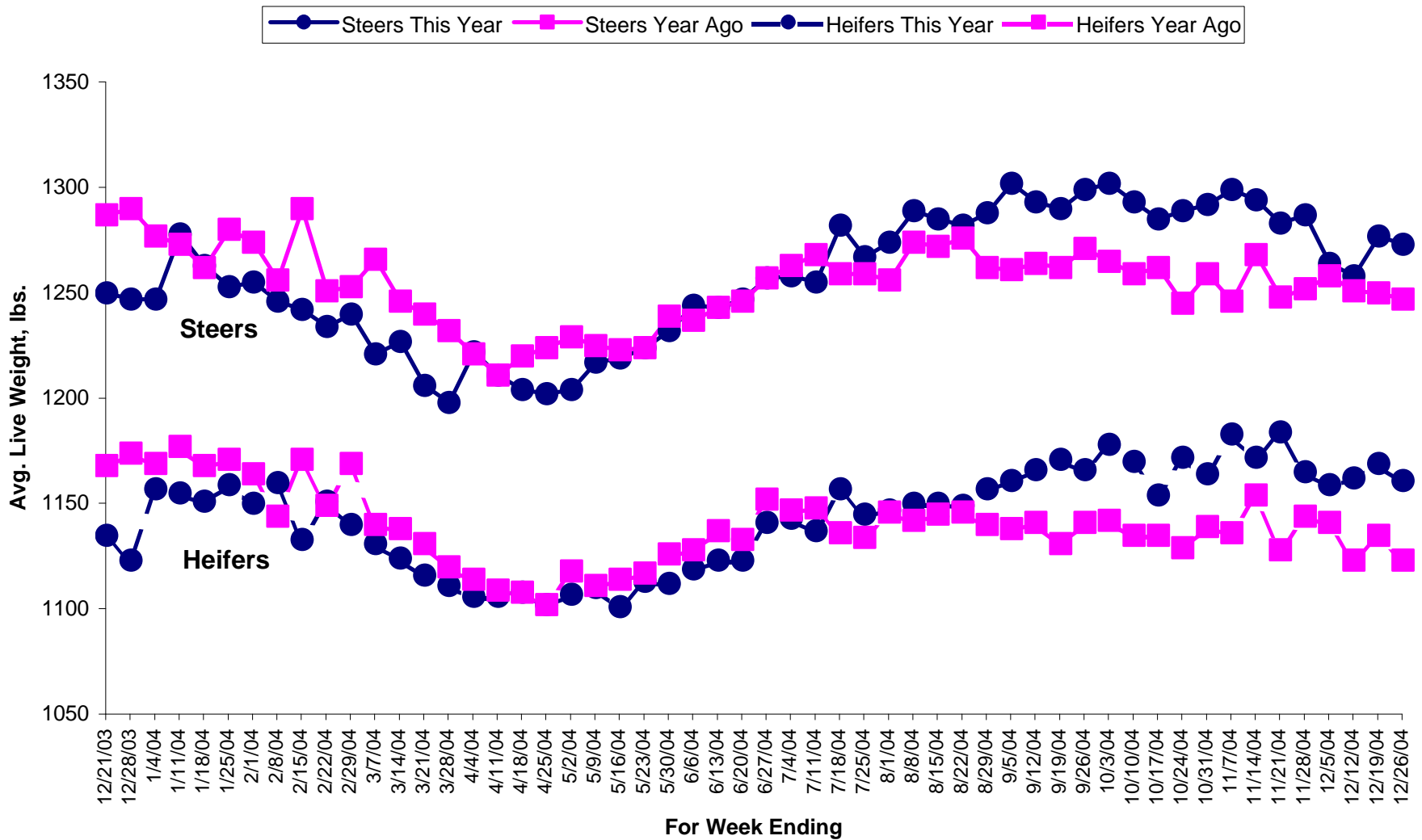
Source: 5 Area Weekly Weighted Average Direct Slaughter Cattle (Texas/Oklahoma, Kansas, Nebraska, Colorado, Iowa/Minnesota feedlots), USDA Market News Service.

Number Head Marketed Heifers, Dressed Delivered



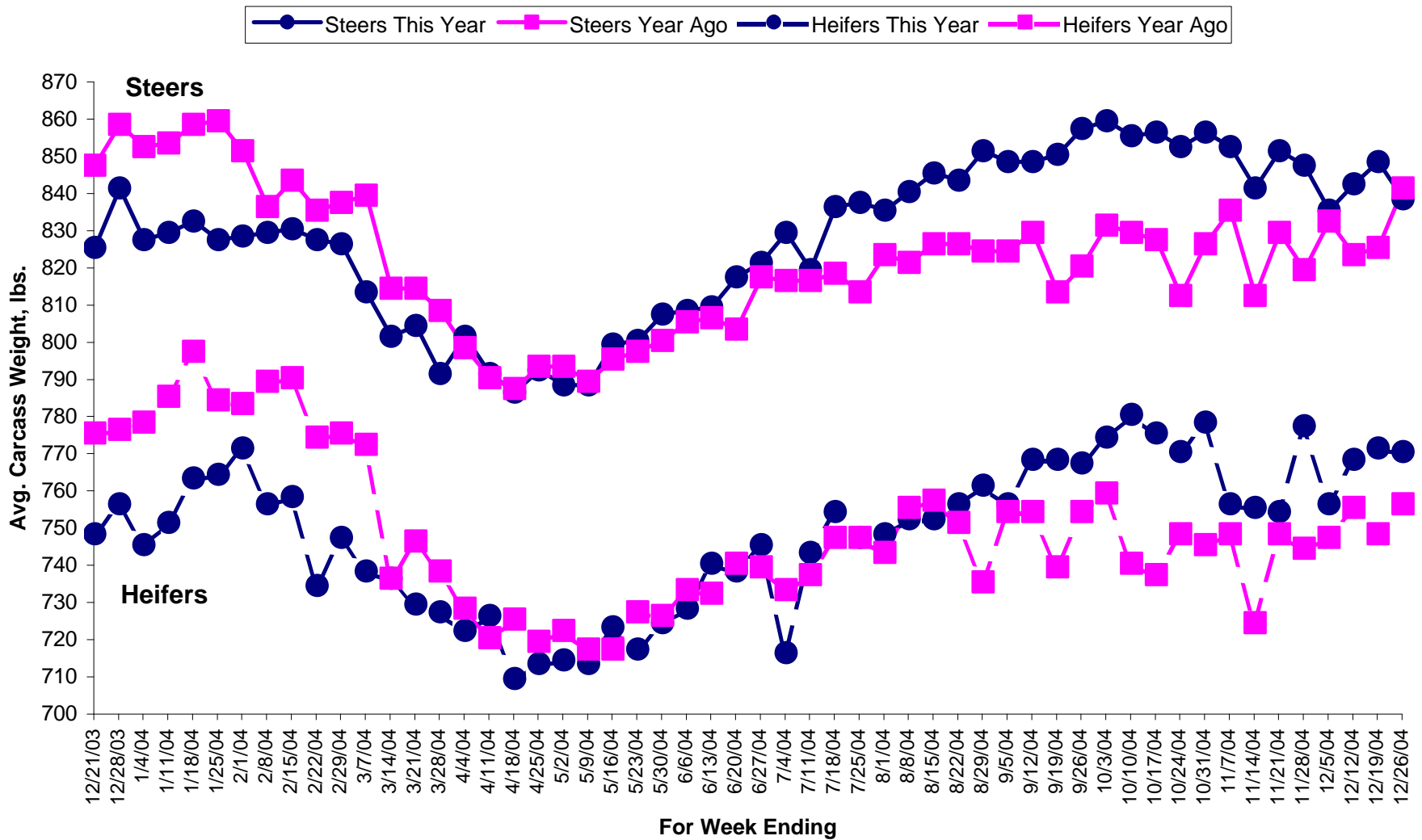
Source: 5 Area Weekly Weighted Average Direct Slaughter Cattle (Texas/Oklahoma, Kansas, Nebraska, Colorado, Iowa/Minnesota feedlots), USDA Market News Service.

Average Live Weight FOB



Source: 5 Area Weekly Weighted Average Direct Slaughter Cattle (Texas/Oklahoma, Kansas, Nebraska, Colorado, Iowa/Minnesota feedlots), USDA Market News Service.

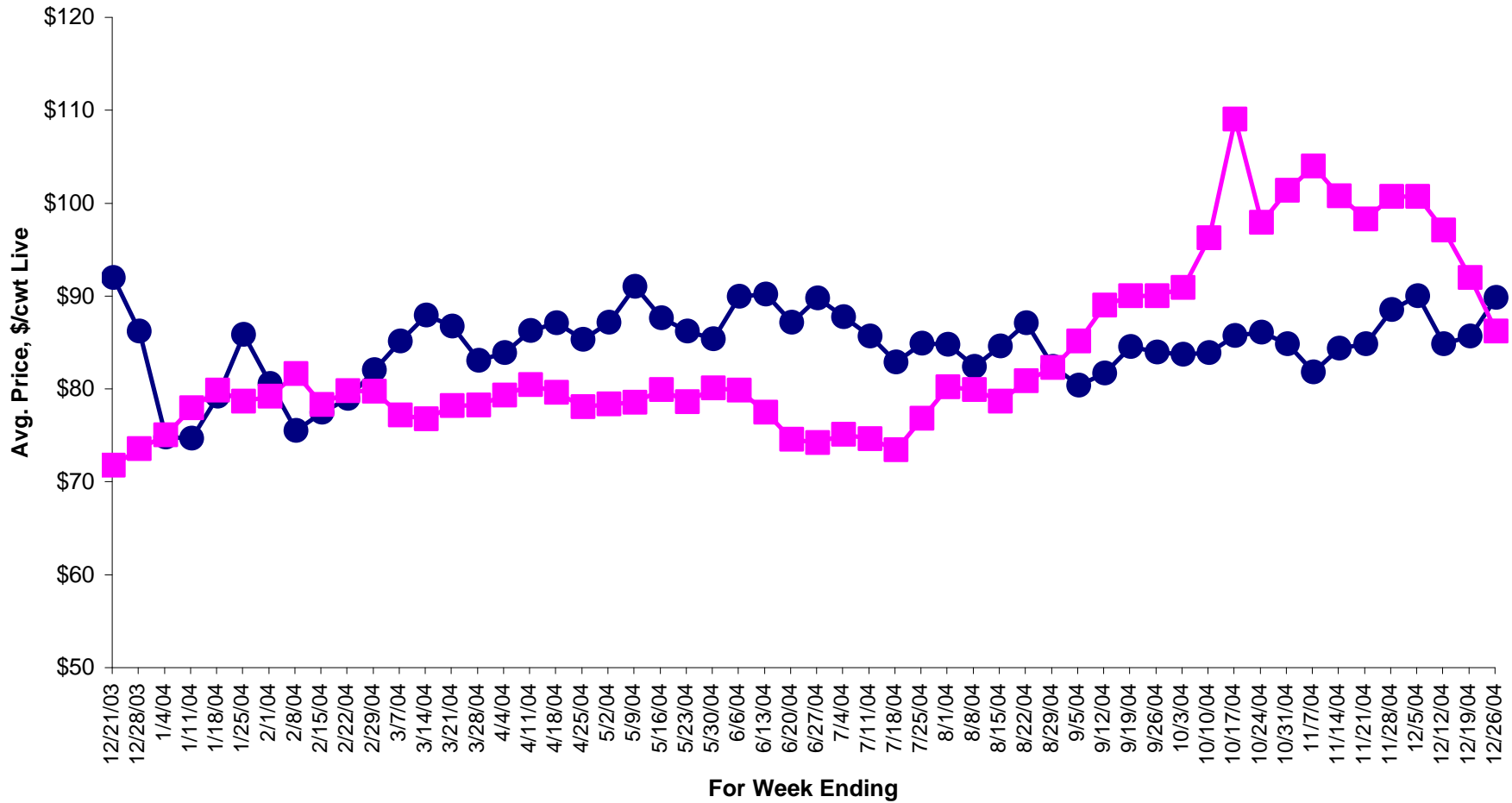
Average Carcass Weight Dressed



Source: 5 Area Weekly Weighted Average Direct Slaughter Cattle (Texas/Oklahoma, Kansas, Nebraska, Colorado, Iowa/Minnesota feedlots), USDA Market News Service.

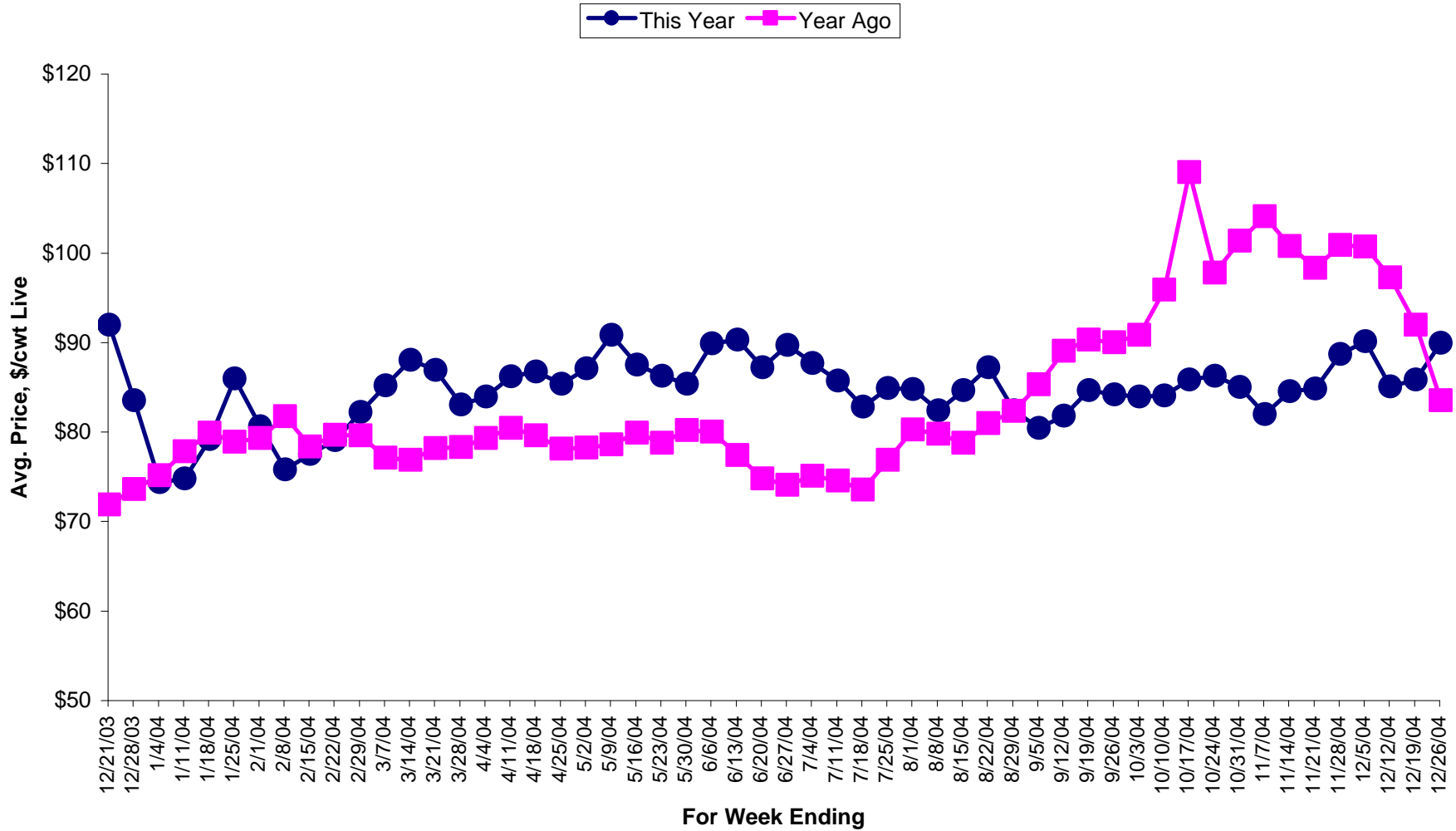
Average Price \$/cwt Steers, Live FOB

● This Year ■ Year Ago



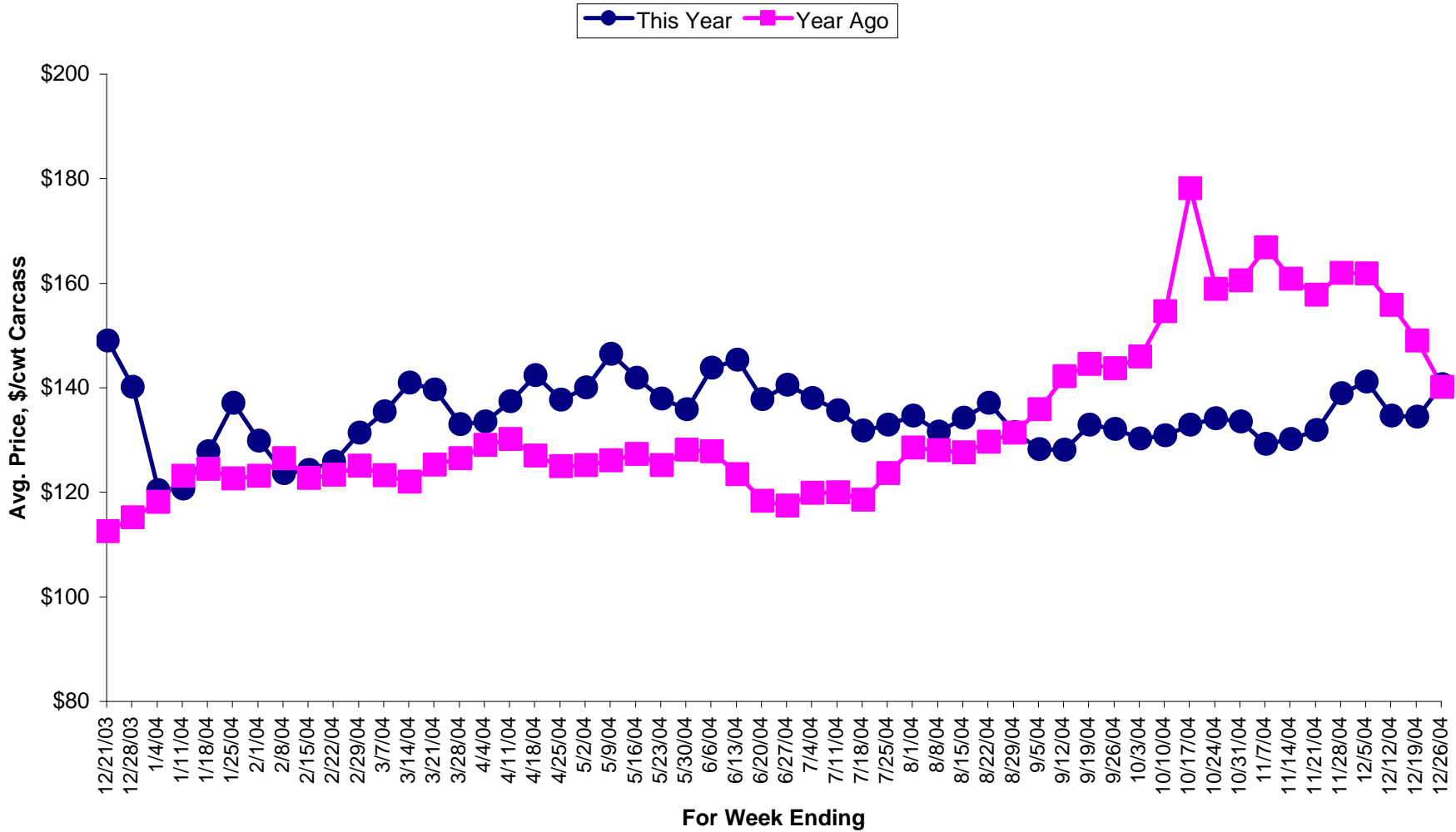
Source: 5 Area Weekly Weighted Average Direct Slaughter Cattle (Texas/Oklahoma, Kansas, Nebraska, Colorado, Iowa/Minnesota feedlots), USDA Market News Service.

Average Price \$/cwt Heifers, Live FOB



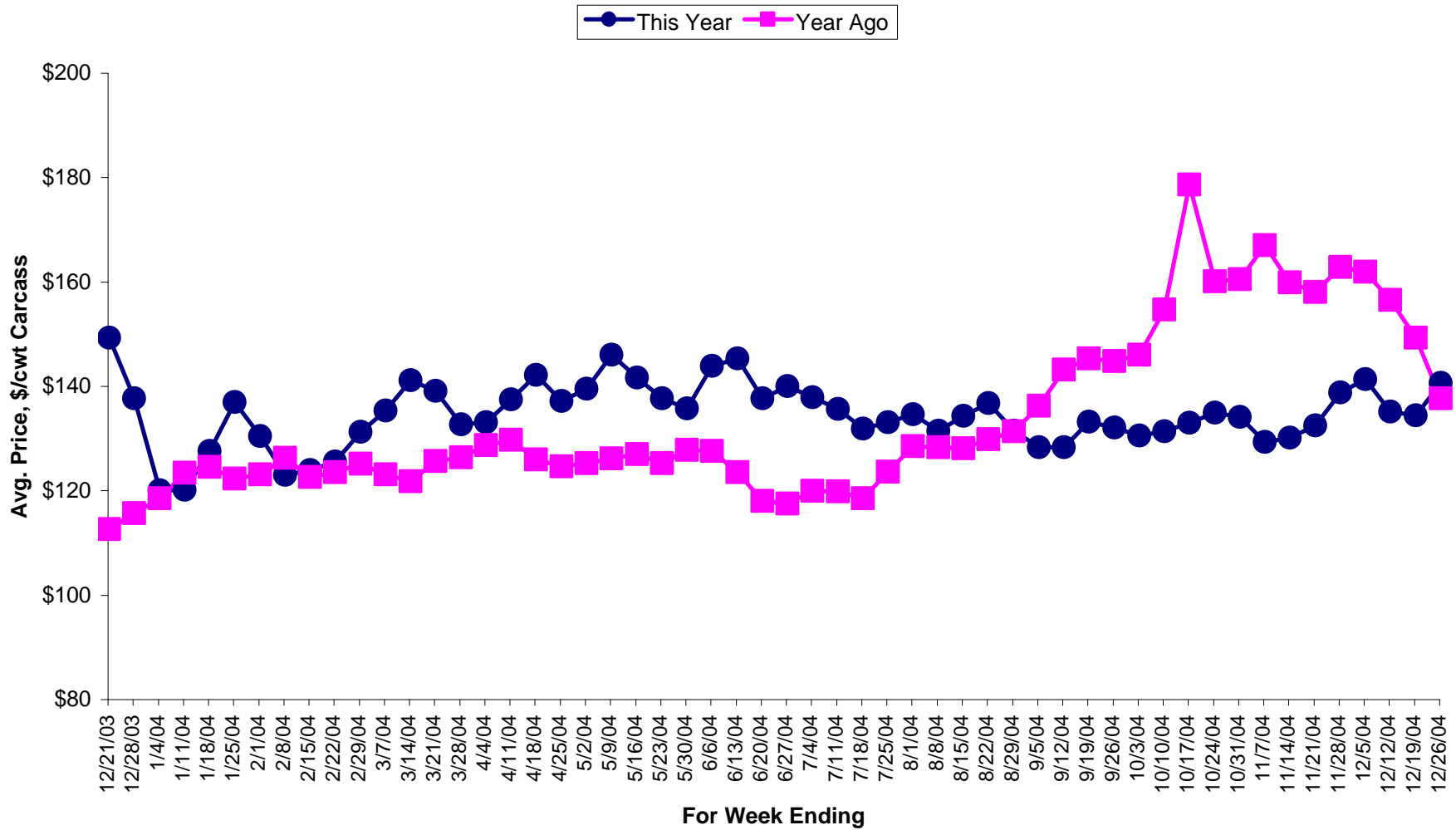
Source: 5 Area Weekly Weighted Average Direct Slaughter Cattle (Texas/Oklahoma, Kansas, Nebraska, Colorado, Iowa/Minnesota feedlots), USDA Market News Service.

Average Price \$/cwt Carcass Weight Basis Steers, Delivered



Source: 5 Area Weekly Weighted Average Direct Slaughter Cattle (Texas/Oklahoma, Kansas, Nebraska, Colorado, Iowa/Minnesota feedlots), USDA Market News Service.

Average Price \$/cwt Carass Weight Basis Heifers, Delivered



Source: 5 Area Weekly Weighted Average Direct Slaughter Cattle (Texas/Oklahoma, Kansas, Nebraska, Colorado, Iowa/Minnesota feedlots), USDA Market News Service.

Week Ending	Number Head of Finished Cattle Marketed Live FOB or Dressed Delivered, by Week							
	Live FOB Steer		Live FOB Heifer		Dressed Del Steer		Dressed Del Heifer	
	No. Head		No. Head		No. Head		No. Head	
	This Year	Year Ago	This Year	Year Ago	This Year	Year Ago	This Year	Year Ago
12/21/2003	37558	37643	26581	29552	17652	15909	21842	13655
12/28/2003	11095	48650	10833	38179	8171	28436	6191	24871
1/4/2004	35687	69433	20946	55928	17532	31760	17654	29903
1/11/2004	44053	69404	42436	58009	32734	32395	22530	29810
1/18/2004	88209	54335	77601	53316	34368	17950	31693	18232
1/25/2004	80262	45383	66468	41224	23471	29833	20457	20311
2/1/2004	52082	66302	51761	64182	19682	24661	19314	22642
2/8/2004	38131	54804	43057	54896	27244	23269	24760	14354
2/15/2004	66815	23610	62677	31288	31804	25427	31793	23431
2/22/2004	48666	51208	58131	58845	25295	28008	26855	21906
2/29/2004	81995	46576	75683	35976	33387	27941	32280	19843
3/7/2004	57964	52546	59320	47787	30574	30754	29504	24161
3/14/2004	75597	61490	64744	52535	31242	22820	23199	23293
3/21/2004	56118	57654	45005	44588	24407	25776	15185	15011
3/28/2004	53101	63008	54870	48657	29271	28503	21821	19448
4/4/2004	40028	62251	32477	47388	17383	34693	16477	20823
4/11/2004	88716	66717	78572	50628	33676	29277	27355	18903
4/18/2004	51563	33247	33061	25584	29503	24528	24680	16754
4/25/2004	80196	56586	49898	47551	37679	35588	26679	26007
5/2/2004	96253	70958	70678	50687	42692	30011	29942	15885
5/9/2004	96660	90138	74179	70060	33418	41184	27589	18196
5/16/2004	62574	85260	46466	59606	34269	32865	19140	27814
5/23/2004	75332	26076	55252	27733	30051	24761	20299	15448
5/30/2004	65703	104237	53133	73535	28681	44248	17393	25643
6/6/2004	98384	56142	75997	45675	44075	25407	28099	13971
6/13/2004	52705	53135	38881	33133	27224	28934	16658	19119
6/20/2004	65431	38302	64240	32037	27658	25953	16843	13765
6/27/2004	98916	50773	70607	46086	45181	29040	22341	19779
7/4/2004	24875	63247	24758	50425	18784	30366	7394	28324
7/11/2004	38691	66025	37447	44281	40273	44354	21557	30855
7/18/2004	65379	79506	54911	58558	36482	43406	22755	28471
7/25/2004	76152	113236	56705	81298	27899	35761	16079	23229
8/1/2004	44693	75172	37782	63783	32087	28589	19441	22260
8/8/2004	54130	53266	41761	42393	33540	26238	21621	19946
8/15/2004	86761	70011	70625	56150	42537	31378	22343	21899
8/22/2004	61026	91245	51584	72818	19265	29120	13297	23094
8/29/2004	40075	72975	33412	55661	28527	30330	17985	21805
9/5/2004	44613	77866	30845	67369	29449	27230	23649	22400
9/12/2004	69021	83706	54690	66013	32786	24386	20331	27768
9/19/2004	56346	56859	58434	59869	30684	11825	24322	8899
9/26/2004	55801	49404	53301	47581	27302	24833	23146	17893
10/3/2004	63685	43693	61562	43103	22122	22247	14516	18402
10/10/2004	66266	76878	68039	69550	25507	24121	15209	22433
10/17/2004	57370	65551	60224	57616	28297	20523	23316	12237
10/24/2004	61955	46345	67262	38019	20632	13639	19776	8990
10/31/2004	35480	65367	41464	54244	24535	20887	18572	17551
11/7/2004	46971	70061	37465	57751	23368	16747	28090	15068
11/14/2004	74126	29286	63969	19016	37753	15083	24969	17624
11/21/2004	31929	56808	35903	47070	18365	20297	12280	13881

Source: 5 Area Weekly Weighted Average Direct Slaughter Cattle (Texas/Oklahoma, Kansas, Nebraska, Colorado, Iowa/Minnesota feedlots), USDA Market News Service.

Week Ending	Live FOB Steer		Live FOB Heifer		Dressed Del Steer		Dressed Del Heifer	
	No. Head		No. Head		No. Head		No. Head	
	This Year	Year Ago	This Year	Year Ago	This Year	Year Ago	This Year	Year Ago
11/28/2004	63970	75300	71564	57141	34855	19980	33264	16227
12/5/2004	66391	44012	61367	43222	31557	22673	20033	15327
12/12/2004	38527	47835	39703	42261	38047	30803	21809	22811
12/19/2004	61033	37558	61600	26581	42999	17652	26437	21842
12/26/2004	75248	11095	60385	10833	38428	8163	17819	6191

Source: 5 Area Weekly Weighted Average Direct Slaughter Cattle (Texas/Oklahoma, Kansas, Nebraska, Colorado, Iowa/Minnesota feedlots), USDA Market News Service.

Average Weights for Finished Cattle Sold Live FOB or Dressed Delivered, by Week
 Live FOB Steer Live FOB Heifer Dressed Del Steer Dressed Del Heifer
Avg Weight Avg Weight Avg Weight Avg Weight

Week Ending	Live FOB Steer		Live FOB Heifer		Dressed Del Steer		Dressed Del Heifer	
	This Year	Year Ago	This Year	Year Ago	This Year	Year Ago	This Year	Year Ago
12/21/2003	1249	1286	1134	1167	825	847	748	775
12/28/2003	1246	1289	1122	1173	841	858	756	776
1/4/2004	1246	1276	1156	1168	827	852	745	778
1/11/2004	1277	1272	1154	1176	829	853	751	785
1/18/2004	1262	1261	1150	1167	832	858	763	797
1/25/2004	1252	1279	1158	1170	827	859	764	784
2/1/2004	1254	1273	1149	1163	828	851	771	783
2/8/2004	1245	1255	1159	1143	829	836	756	789
2/15/2004	1241	1289	1132	1170	830	843	758	790
2/22/2004	1233	1250	1150	1148	827	835	734	774
2/29/2004	1239	1252	1139	1168	826	837	747	775
3/7/2004	1220	1265	1130	1139	813	839	738	772
3/14/2004	1226	1245	1123	1137	801	814	736	736
3/21/2004	1205	1239	1115	1130	804	814	729	746
3/28/2004	1197	1231	1110	1119	791	808	727	738
4/4/2004	1221	1220	1105	1113	801	798	722	728
4/11/2004	1210	1210	1105	1108	791	790	726	720
4/18/2004	1203	1219	1107	1107	786	787	709	725
4/25/2004	1201	1223	1101	1101	792	793	713	719
5/2/2004	1203	1228	1106	1117	788	793	714	722
5/9/2004	1216	1224	1109	1110	788	789	713	717
5/16/2004	1218	1222	1100	1113	799	795	723	717
5/23/2004	1223	1223	1112	1116	800	797	717	727
5/30/2004	1231	1238	1111	1125	807	800	724	726
6/6/2004	1243	1236	1118	1127	808	805	728	733
6/13/2004	1242	1242	1122	1136	809	806	740	732
6/20/2004	1246	1245	1122	1132	817	803	738	740
6/27/2004	1256	1256	1140	1151	821	817	745	739
7/4/2004	1257	1262	1142	1146	829	816	716	733
7/11/2004	1254	1267	1136	1147	819	816	743	737
7/18/2004	1281	1258	1156	1135	836	818	754	747
7/25/2004	1266	1258	1144	1133	837	813	747	747
8/1/2004	1273	1255	1146	1145	835	823	748	743
8/8/2004	1288	1273	1149	1141	840	821	752	755
8/15/2004	1284	1271	1149	1144	845	826	752	757
8/22/2004	1281	1275	1148	1145	843	826	756	751
8/29/2004	1287	1261	1156	1139	851	824	761	735
9/5/2004	1301	1260	1160	1137	848	824	756	754
9/12/2004	1292	1263	1165	1140	848	829	768	754
9/19/2004	1289	1261	1170	1130	850	813	768	739
9/26/2004	1298	1270	1165	1140	857	820	767	754
10/3/2004	1301	1264	1177	1141	859	831	774	759
10/10/2004	1292	1258	1169	1134	855	829	780	740
10/17/2004	1284	1261	1153	1134	856	827	775	737
10/24/2004	1288	1244	1171	1128	852	812	770	748
10/31/2004	1291	1258	1163	1138	856	826	778	745
11/7/2004	1298	1245	1182	1135	852	835	756	748
11/14/2004	1293	1267	1171	1153	841	812	755	724
11/21/2004	1282	1247	1183	1127	851	829	754	748

Source: 5 Area Weekly Weighted Average Direct Slaughter Cattle (Texas/Oklahoma, Kansas, Nebraska, Colorado, Iowa/Minnesota feedlots), USDA Market News Service.

Average Weights for Finished Cattle Sold Live FOB or Dressed Delivered, by Week
 Live FOB Steer Live FOB Heifer Dressed Del Steer Dressed Del Heifer
Avg Weight Avg Weight Avg Weight Avg Weight

Week Ending	Live FOB Steer		Live FOB Heifer		Dressed Del Steer		Dressed Del Heifer	
	This Year	Year Ago	This Year	Year Ago	This Year	Year Ago	This Year	Year Ago
11/28/2004	1286	1251	1164	1143	847	819	777	744
12/5/2004	1263	1257	1158	1140	835	832	756	747
12/12/2004	1257	1250	1161	1122	842	823	768	755
12/19/2004	1276	1249	1168	1134	848	825	771	748
12/26/2004	1272	1246	1160	1122	838	841	770	756

Source: 5 Area Weekly Weighted Average Direct Slaughter Cattle (Texas/Oklahoma, Kansas, Nebraska, Colorado, Iowa/Minnesota feedlots), USDA Market News Service.

Average Prices Paid for Finished Cattle Sold Live FOB or Dressed Delivered, by Week

Week Ending	Live FOB Steer		Live FOB Heifer		Dressed Del Steer		Dressed Del Heifer	
	Avg Price		Avg Price		Avg Price		Avg Price	
	This Year	Year Ago	This Year	Year Ago	This Year	Year Ago	This Year	Year Ago
12/21/2003	\$91.75	\$71.59	\$91.77	\$71.69	\$148.70	\$112.24	\$148.96	\$112.28
12/28/2003	\$86.01	\$73.35	\$83.36	\$73.39	\$139.80	\$114.79	\$137.33	\$115.32
1/4/2004	\$74.59	\$74.82	\$74.17	\$74.95	\$120.05	\$117.82	\$119.73	\$118.16
1/11/2004	\$74.51	\$77.77	\$74.61	\$77.65	\$120.31	\$122.74	\$119.81	\$123.11
1/18/2004	\$78.98	\$79.66	\$79.02	\$79.69	\$127.51	\$124.12	\$127.28	\$124.20
1/25/2004	\$85.68	\$78.48	\$85.78	\$78.71	\$136.75	\$122.29	\$136.68	\$121.95
2/1/2004	\$80.38	\$79.01	\$80.44	\$79.11	\$129.54	\$122.80	\$130.14	\$122.74
2/8/2004	\$75.29	\$81.41	\$75.60	\$81.55	\$123.32	\$126.18	\$122.71	\$125.95
2/15/2004	\$77.28	\$78.11	\$77.35	\$78.18	\$123.93	\$122.41	\$123.61	\$122.29
2/22/2004	\$78.77	\$79.57	\$78.85	\$79.50	\$125.53	\$122.97	\$125.27	\$123.15
2/29/2004	\$81.86	\$79.54	\$82.02	\$79.44	\$131.08	\$124.74	\$130.98	\$124.85
3/7/2004	\$84.95	\$76.96	\$84.98	\$76.94	\$135.15	\$122.88	\$134.96	\$122.77
3/14/2004	\$87.71	\$76.55	\$87.84	\$76.67	\$140.60	\$121.63	\$140.84	\$121.50
3/21/2004	\$86.53	\$77.97	\$86.70	\$77.96	\$139.29	\$124.93	\$138.78	\$125.35
3/28/2004	\$82.84	\$78.06	\$82.86	\$78.09	\$132.68	\$126.19	\$132.37	\$126.03
4/4/2004	\$83.67	\$79.12	\$83.78	\$79.14	\$133.16	\$128.73	\$132.72	\$128.41
4/11/2004	\$86.08	\$80.26	\$86.03	\$80.22	\$137.05	\$129.82	\$137.11	\$129.44
4/18/2004	\$86.88	\$79.40	\$86.53	\$79.41	\$142.07	\$126.62	\$141.81	\$125.66
4/25/2004	\$85.12	\$77.87	\$85.20	\$77.92	\$137.38	\$124.58	\$136.89	\$124.28
5/2/2004	\$86.94	\$78.16	\$86.91	\$78.06	\$139.70	\$124.86	\$139.20	\$124.90
5/9/2004	\$90.84	\$78.37	\$90.65	\$78.42	\$146.14	\$125.72	\$145.74	\$125.81
5/16/2004	\$87.46	\$79.69	\$87.32	\$79.69	\$141.50	\$126.96	\$141.28	\$126.66
5/23/2004	\$86.03	\$78.43	\$86.05	\$78.56	\$137.60	\$124.87	\$137.38	\$124.89
5/30/2004	\$85.15	\$79.90	\$85.15	\$80.01	\$135.55	\$127.76	\$135.39	\$127.49
6/6/2004	\$89.75	\$79.68	\$89.70	\$79.82	\$143.47	\$127.46	\$143.61	\$127.31
6/13/2004	\$89.98	\$77.30	\$90.09	\$77.23	\$144.95	\$123.08	\$145.03	\$123.19
6/20/2004	\$86.99	\$74.38	\$87.01	\$74.60	\$137.49	\$118.03	\$137.31	\$117.72
6/27/2004	\$89.55	\$73.98	\$89.54	\$73.91	\$140.20	\$117.11	\$139.70	\$117.14
7/4/2004	\$87.58	\$74.90	\$87.51	\$74.89	\$137.68	\$119.55	\$137.56	\$119.63
7/11/2004	\$85.45	\$74.41	\$85.54	\$74.39	\$135.29	\$119.62	\$135.33	\$119.57
7/18/2004	\$82.68	\$73.25	\$82.63	\$73.33	\$131.41	\$118.19	\$131.52	\$118.25
7/25/2004	\$84.69	\$76.63	\$84.70	\$76.66	\$132.58	\$123.27	\$132.75	\$123.26
8/1/2004	\$84.58	\$80.00	\$84.59	\$80.05	\$134.28	\$128.14	\$134.29	\$128.19
8/8/2004	\$82.18	\$79.69	\$82.20	\$79.57	\$131.28	\$127.71	\$131.14	\$128.01
8/15/2004	\$84.42	\$78.47	\$84.44	\$78.56	\$133.92	\$127.29	\$133.99	\$127.74
8/22/2004	\$86.89	\$80.64	\$87.05	\$80.77	\$136.76	\$129.30	\$136.42	\$129.50
8/29/2004	\$82.22	\$82.07	\$82.21	\$82.13	\$131.10	\$131.02	\$131.09	\$131.03
9/5/2004	\$80.18	\$84.92	\$80.24	\$85.11	\$127.85	\$135.54	\$127.93	\$135.92
9/12/2004	\$81.50	\$88.79	\$81.64	\$88.89	\$127.78	\$141.85	\$127.99	\$142.82
9/19/2004	\$84.32	\$89.82	\$84.45	\$90.10	\$132.61	\$144.20	\$132.88	\$144.98
9/26/2004	\$83.78	\$89.80	\$83.99	\$89.80	\$131.77	\$143.38	\$131.79	\$144.50
10/3/2004	\$83.52	\$90.73	\$83.74	\$90.62	\$129.88	\$145.65	\$130.23	\$145.74
10/10/2004	\$83.69	\$96.08	\$83.88	\$95.67	\$130.52	\$154.30	\$131.03	\$154.35
10/17/2004	\$85.53	\$108.80	\$85.64	\$108.80	\$132.55	\$177.78	\$132.70	\$178.33
10/24/2004	\$85.91	\$97.70	\$86.08	\$97.59	\$133.79	\$158.55	\$134.63	\$159.75
10/31/2004	\$84.66	\$101.17	\$84.84	\$101.14	\$133.21	\$160.12	\$133.78	\$160.17
11/7/2004	\$81.61	\$103.80	\$81.82	\$103.92	\$128.93	\$166.44	\$129.02	\$166.67
11/14/2004	\$84.19	\$100.57	\$84.32	\$100.56	\$129.84	\$160.51	\$129.85	\$159.55
11/21/2004	\$84.62	\$98.08	\$84.62	\$98.16	\$131.50	\$157.41	\$132.17	\$157.74

Source: 5 Area Weekly Weighted Average Direct Slaughter Cattle (Texas/Oklahoma, Kansas, Nebraska, Colorado, Iowa/Minnesota feedlots), USDA Market News Service.

Average Prices Paid for Finished Cattle Sold Live FOB or Dressed Delivered, by Week

Week Ending	Live FOB Steer		Live FOB Heifer		Dressed Del Steer		Dressed Del Heifer	
	<u>Avg Price</u>		<u>Avg Price</u>		<u>Avg Price</u>		<u>Avg Price</u>	
	This Year	Year Ago	This Year	Year Ago	This Year	Year Ago	This Year	Year Ago
11/28/2004	\$88.33	\$100.49	\$88.52	\$100.68	\$138.54	\$161.59	\$138.47	\$162.49
12/5/2004	\$89.83	\$100.48	\$89.91	\$100.51	\$140.83	\$161.45	\$140.99	\$161.60
12/12/2004	\$84.65	\$96.87	\$84.87	\$97.06	\$134.28	\$155.44	\$134.79	\$156.15
12/19/2004	\$85.50	\$91.75	\$85.63	\$91.77	\$134.09	\$148.70	\$134.12	\$148.96
12/26/2004	\$89.62	\$86.01	\$89.75	\$83.36	\$140.35	\$139.79	\$140.31	\$137.33

Source: 5 Area Weekly Weighted Average Direct Slaughter Cattle (Texas/Oklahoma, Kansas, Nebraska, Colorado, Iowa/Minnesota feedlots), USDA Market News Service.