

2005 MARKETING YEAR

Having knowledge of accurate and current marketing information can assist beef cattle producers in making management decisions in their operations. The USDA Market News Service, St. Joseph, MO, provides numerous reports for various markets throughout the US. One report, "5 Area Weekly Weighted Average Direct Slaughter Cattle," reports marketings, weights, and prices of feedlot cattle from Texas/Oklahoma, Kansas, Nebraska, Colorado, and Iowa/Minnesota. The report covers steers and heifers that were marketed on a live or dressed basis. The report is updated weekly and covers the previous week's marketings. A summary is provided showing the most recent week, last week, and year ago data.

The information used for this web page utilizes the summary data. Charts are provided for number head marketed, live and dressed weights, and prices. For the 2005 marketing year, charts begin with the week ending December 26, 2004. The charts include weekly data through the week ending January 1, 2006. The numerical data used in the charts is also available in table form.

The weekly USDA report contains detailed information relating to percentage of choice grade cattle, numbers, weights, and prices. For the detailed report, go to http://www.ams.usda.gov/mnreports/lm_ct150.txt.

Other reports which are available include:

"5 Area Weekly Weighted Average Direct Slaughter Cattle - Premiums and Discounts" at http://www.ams.usda.gov/mnreports/lm_ct169.txt

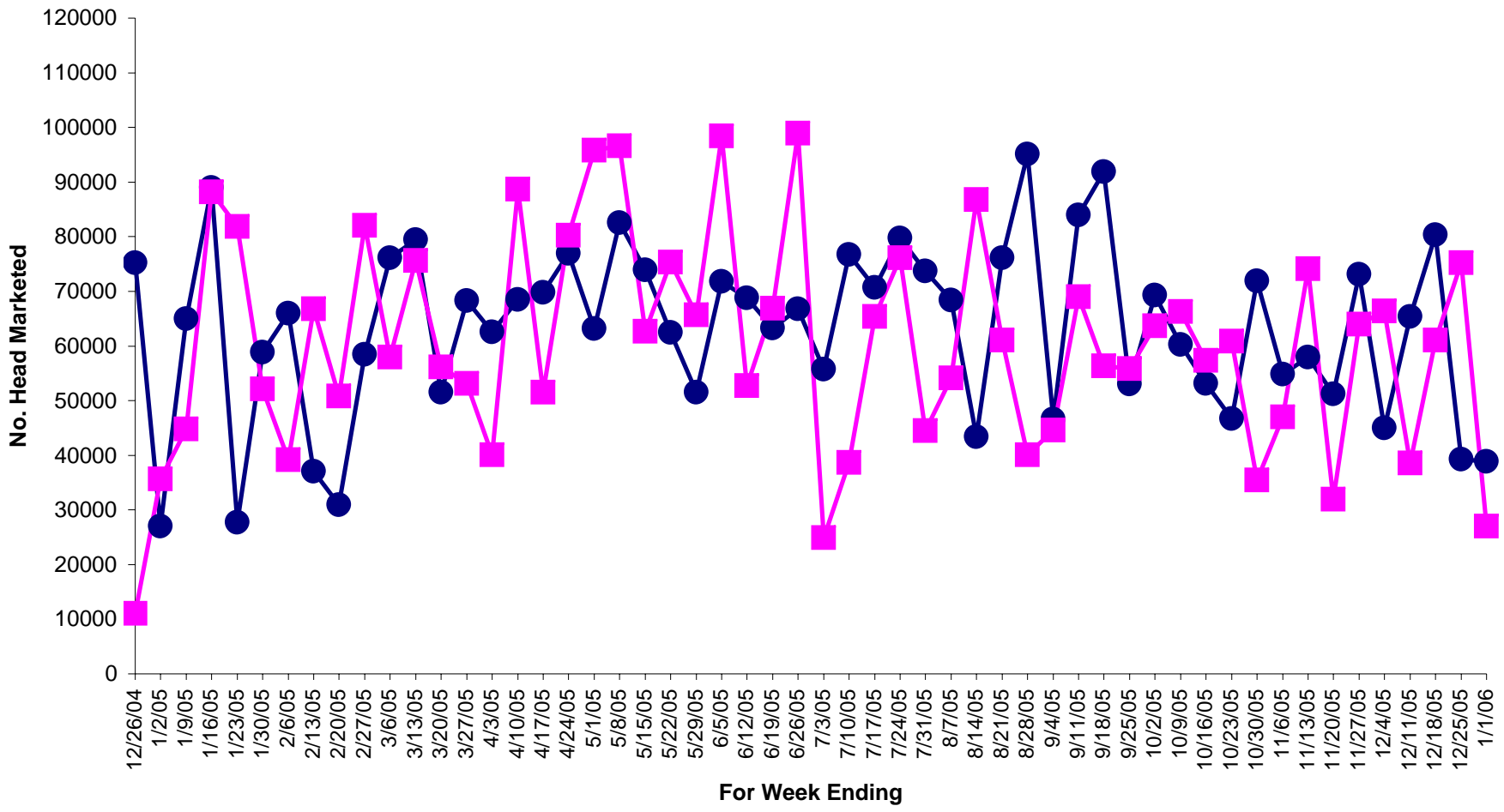
"National Weekly Direct Slaughter Cattle - Premiums and Discounts" at http://www.ams.usda.gov/mnreports/lm_ct155.txt

"Eastern Cornbelt Direct Feeder Cattle Summary" at http://www.ams.usda.gov/mnreports/qx_LS161.txt.

Many more reports can be accessed from the USDA Agricultural Marketing Service's Livestock and Grain Market News web site at <http://www.ams.usda.gov/lsmnpubs/>.

Number Head Marketed Steers, Live FOB

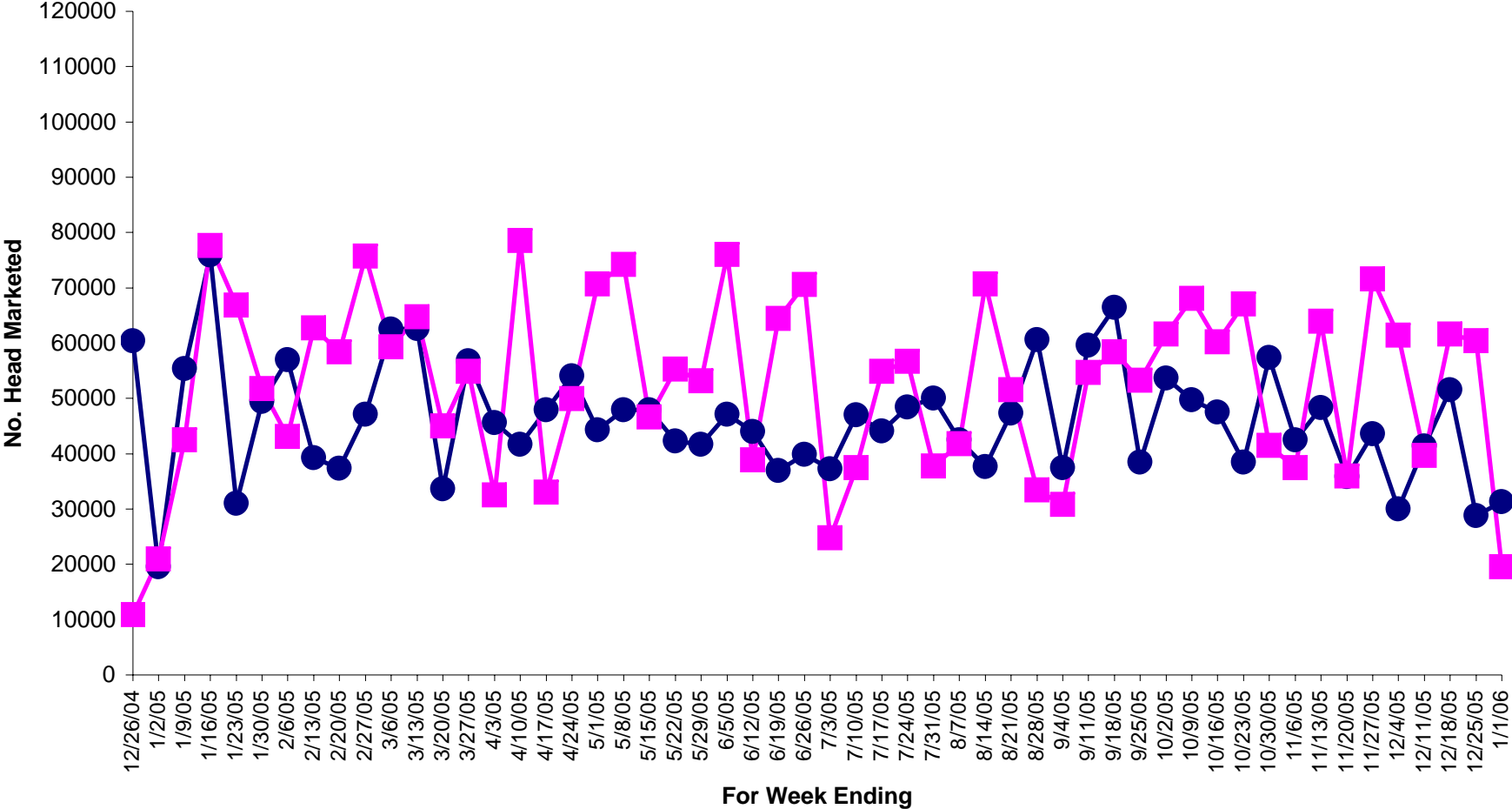
● This Year ■ Year Ago



Source: 5 Area Weekly Weighted Average Direct Slaughter Cattle (Texas/Oklahoma, Kansas, Nebraska, Colorado, Iowa/Minnesota feedlots), USDA Market News Service.

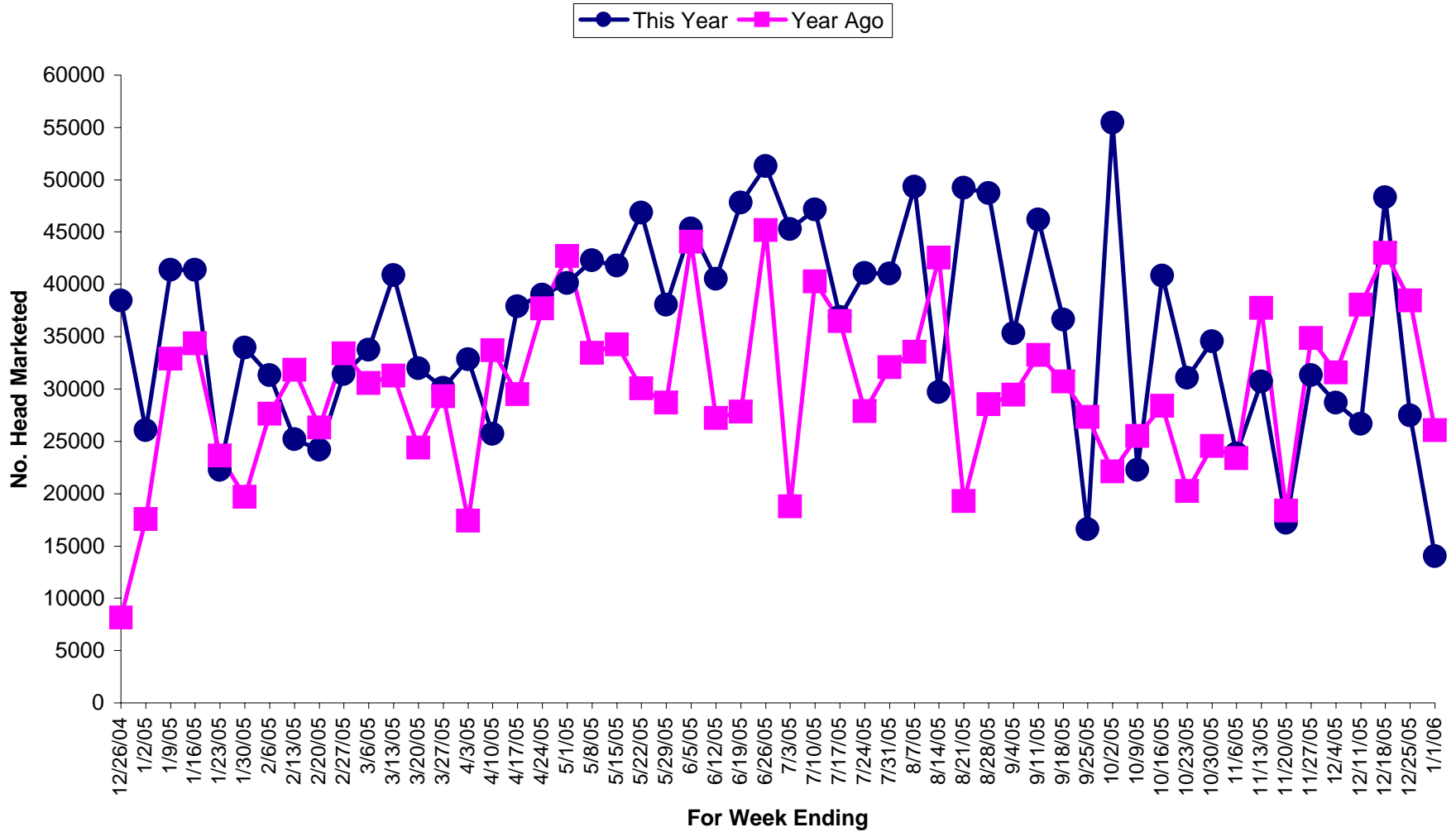
Number Head Marketed Heifers, Live FOB

● This Year ■ Year Ago



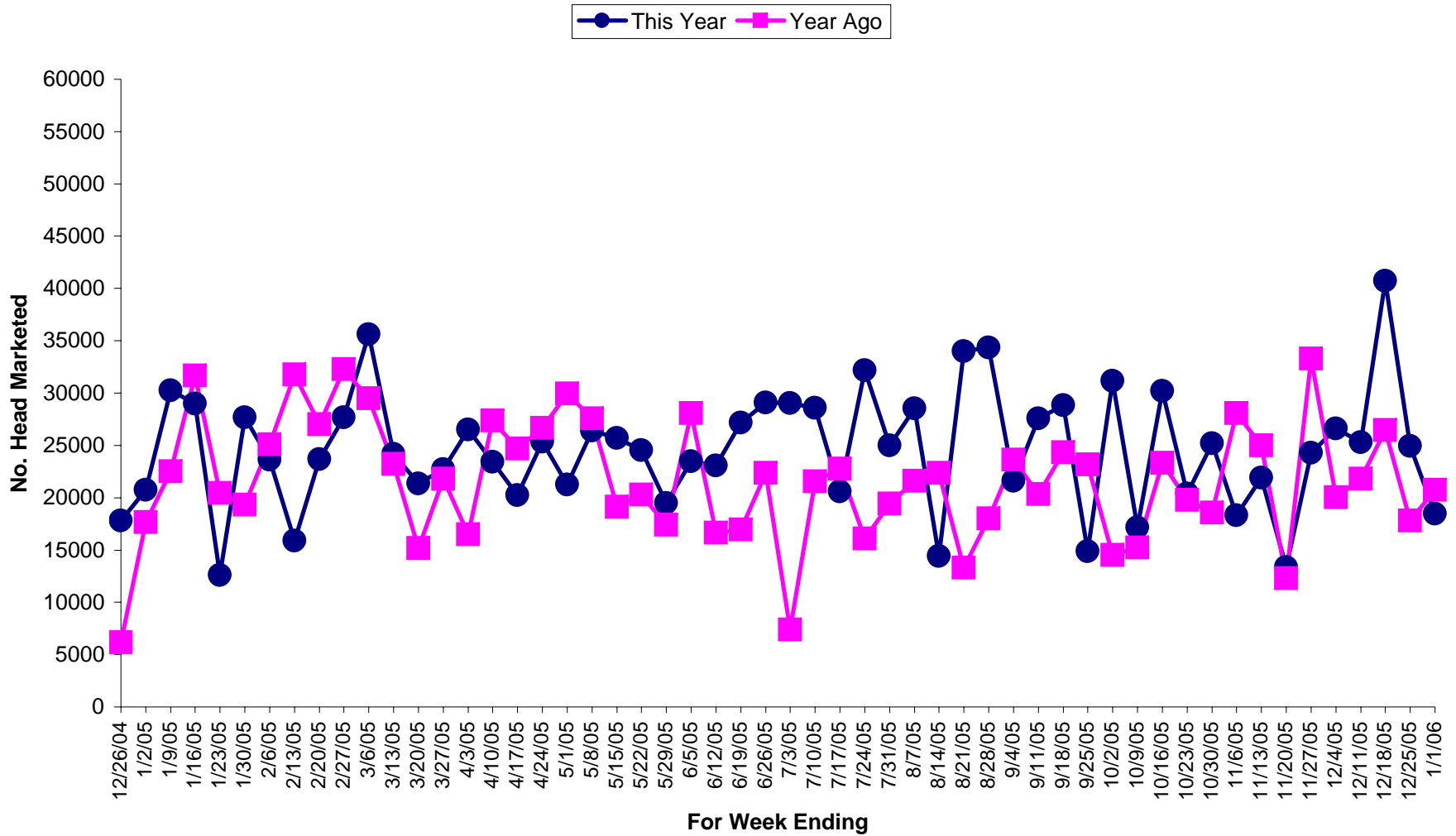
Source: 5 Area Weekly Weighted Average Direct Slaughter Cattle (Texas/Oklahoma, Kansas, Nebraska, Colorado, Iowa/Minnesota feedlots), USDA Market News Service.

Number Head Marketed Steers, Dressed Delivered



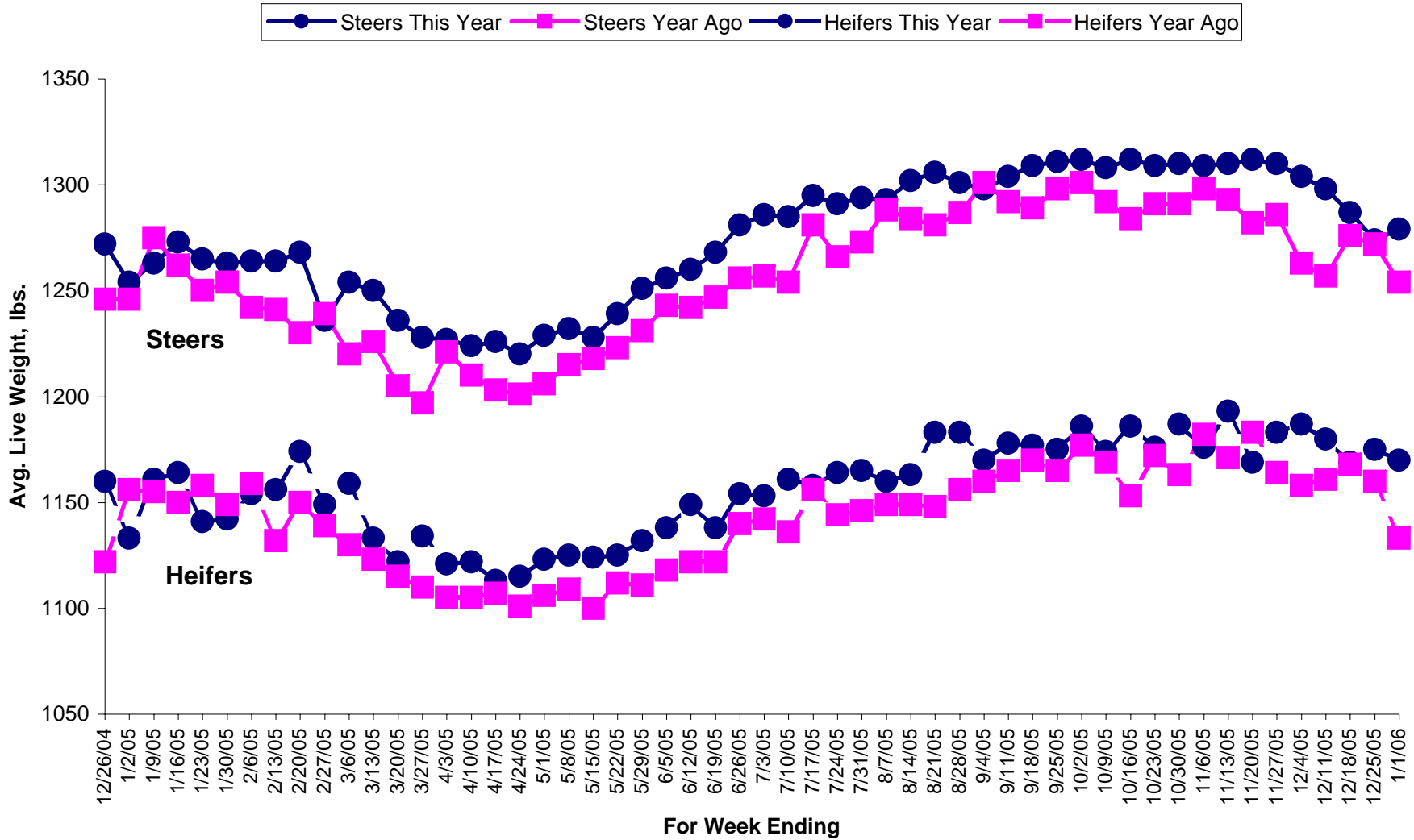
Source: 5 Area Weekly Weighted Average Direct Slaughter Cattle (Texas/Oklahoma, Kansas, Nebraska, Colorado, Iowa/Minnesota feedlots), USDA Market News Service.

Number Head Marketed Heifers, Dressed Delivered



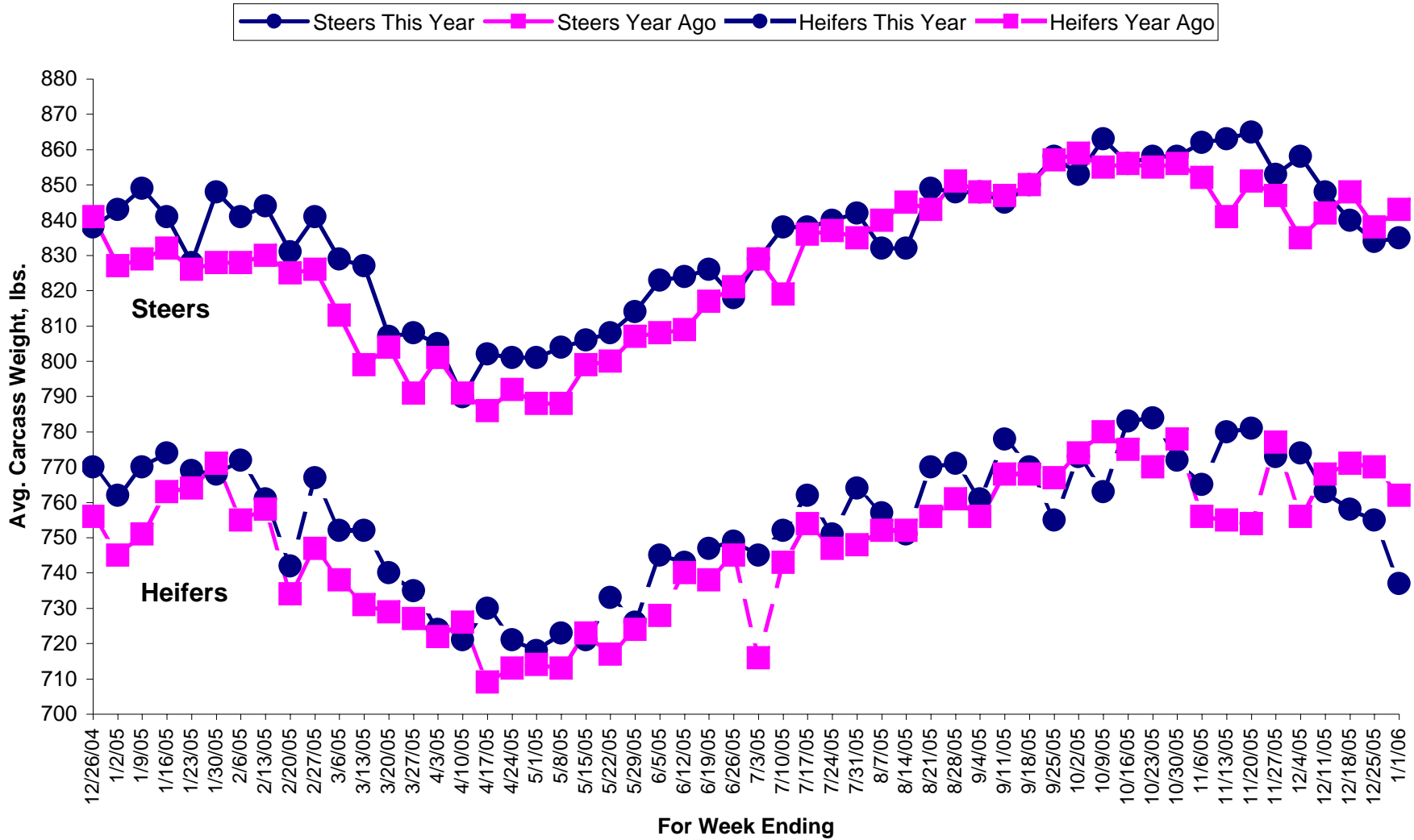
Source: 5 Area Weekly Weighted Average Direct Slaughter Cattle (Texas/Oklahoma, Kansas, Nebraska, Colorado, Iowa/Minnesota feedlots), USDA Market News Service.

Average Live Weight FOB



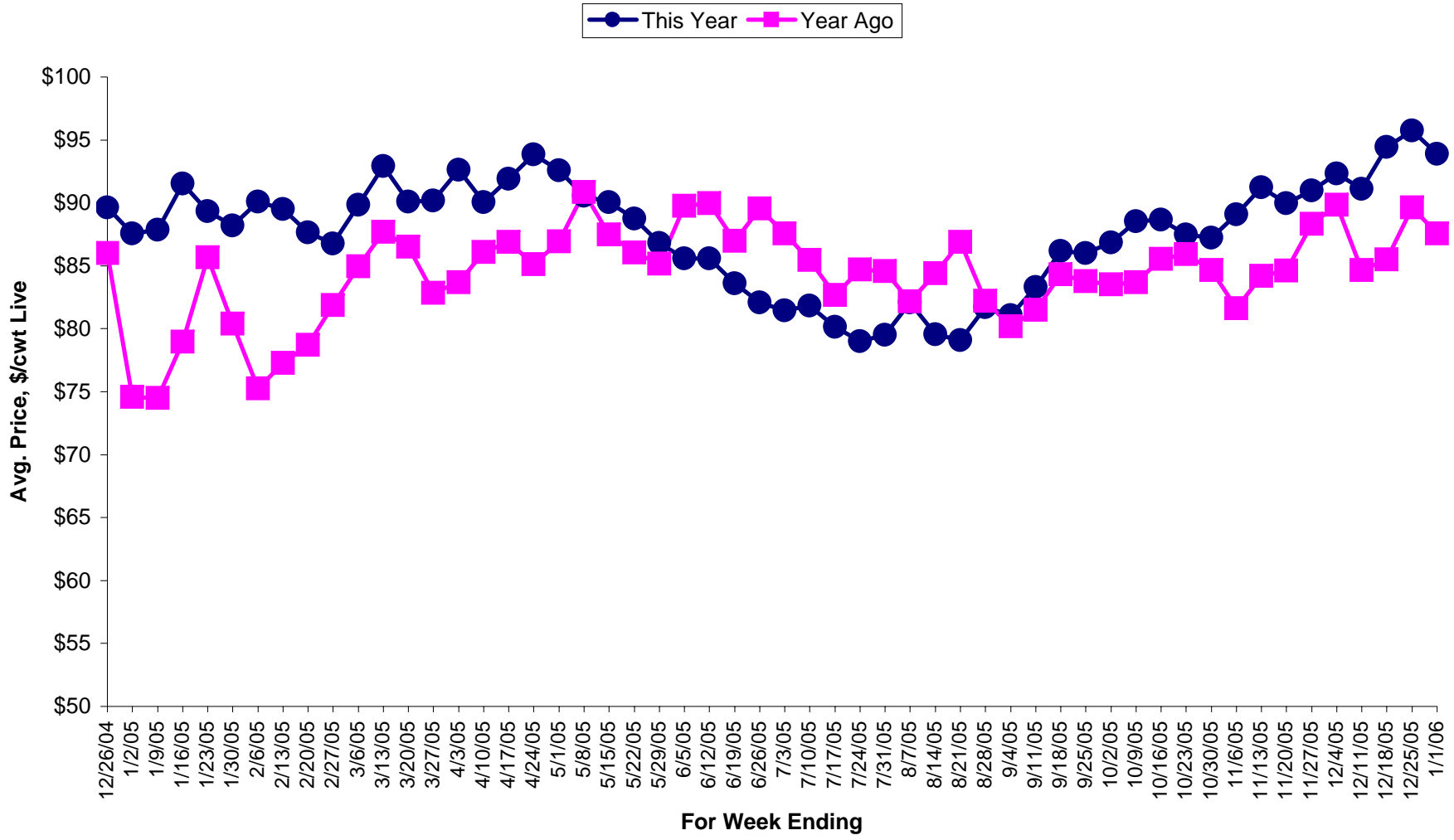
Source: 5 Area Weekly Weighted Average Direct Slaughter Cattle (Texas/Oklahoma, Kansas, Nebraska, Colorado, Iowa/Minnesota feedlots), USDA Market News Service.

Average Carcass Weight Dressed



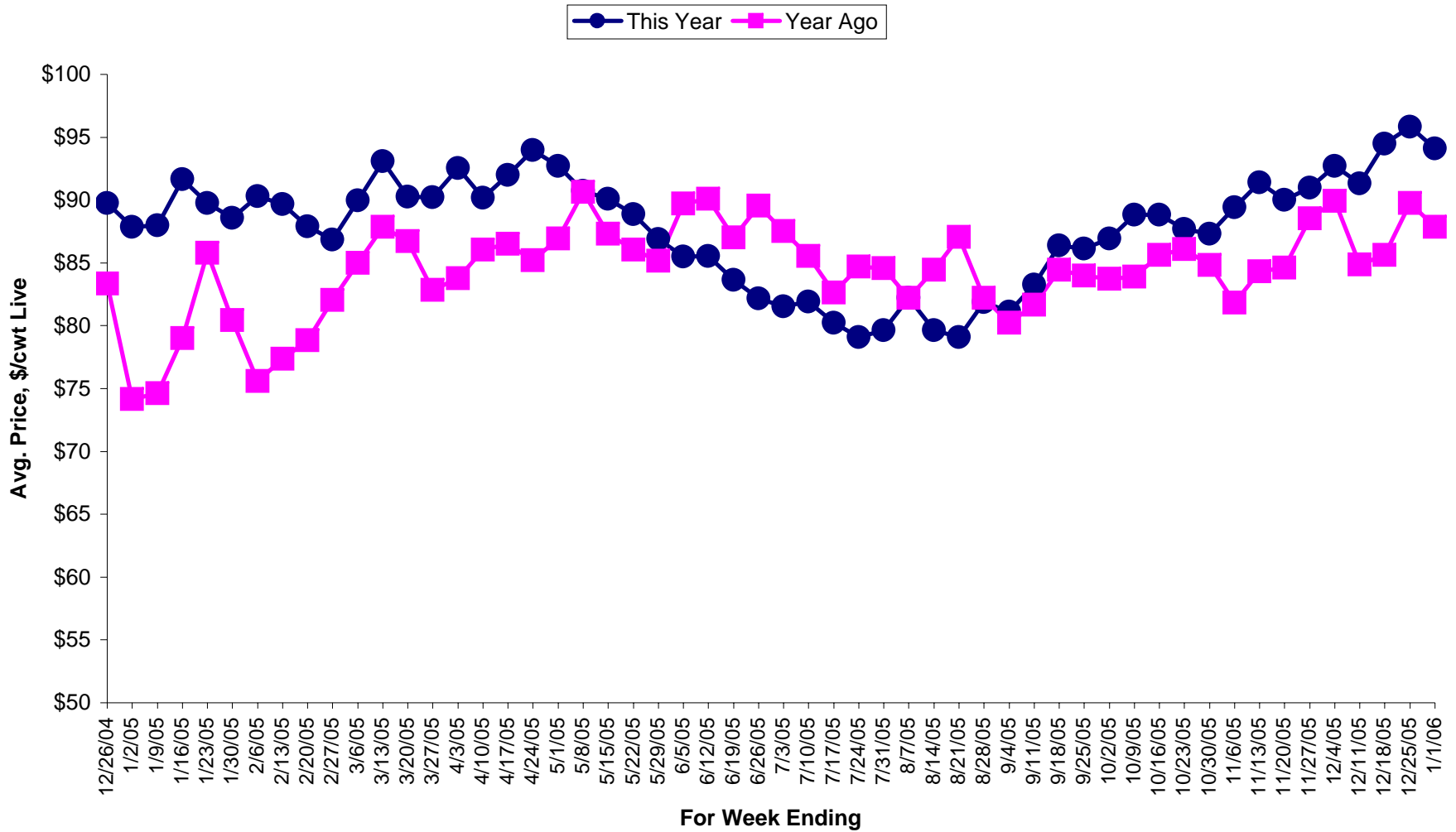
Source: 5 Area Weekly Weighted Average Direct Slaughter Cattle (Texas/Oklahoma, Kansas, Nebraska, Colorado, Iowa/Minnesota feedlots), USDA Market News Service.

Average Price \$/cwt Steers, Live FOB



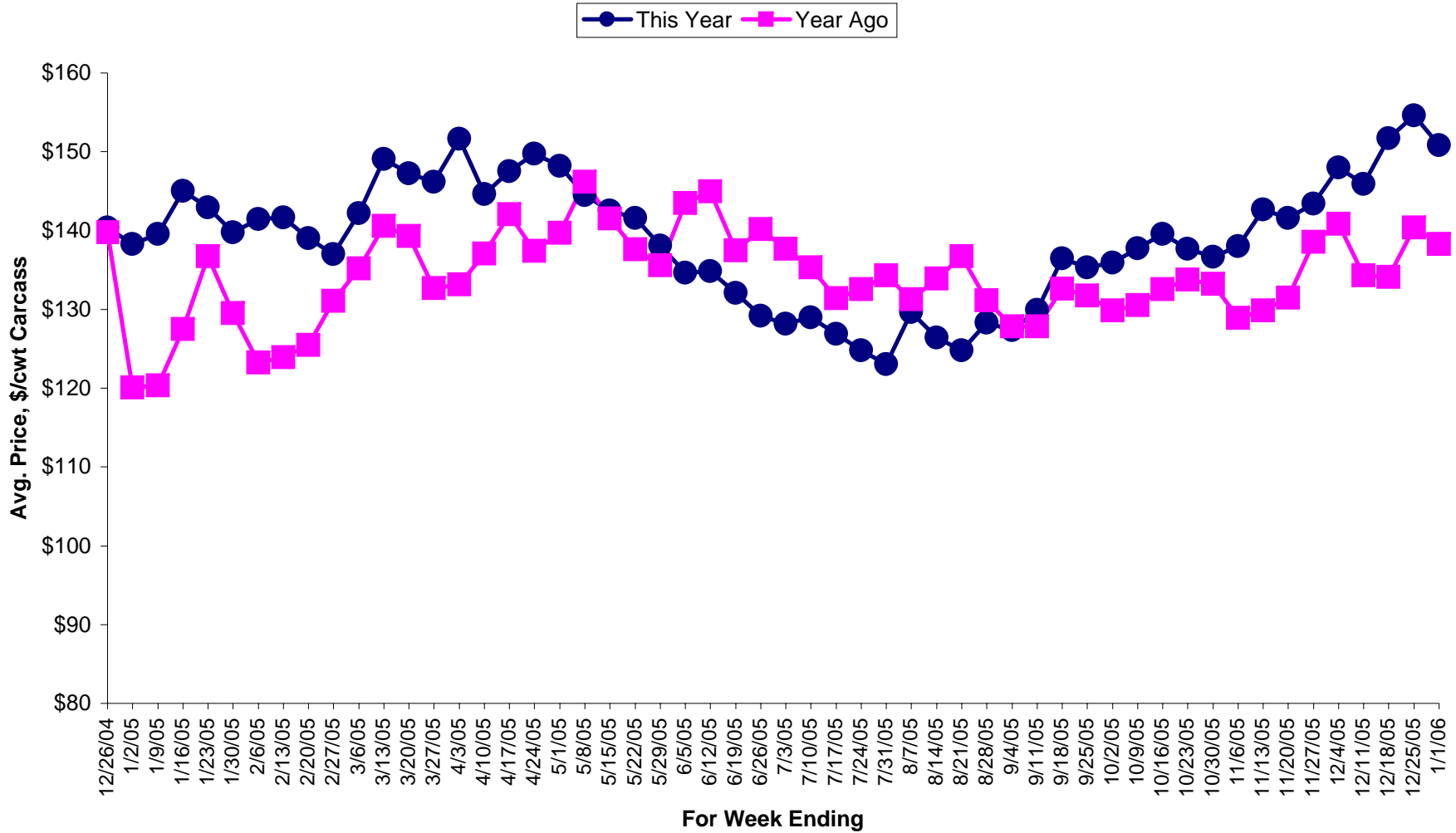
Source: 5 Area Weekly Weighted Average Direct Slaughter Cattle (Texas/Oklahoma, Kansas, Nebraska, Colorado, Iowa/Minnesota feedlots), USDA Market News Service.

Average Price \$/cwt Heifers, Live FOB



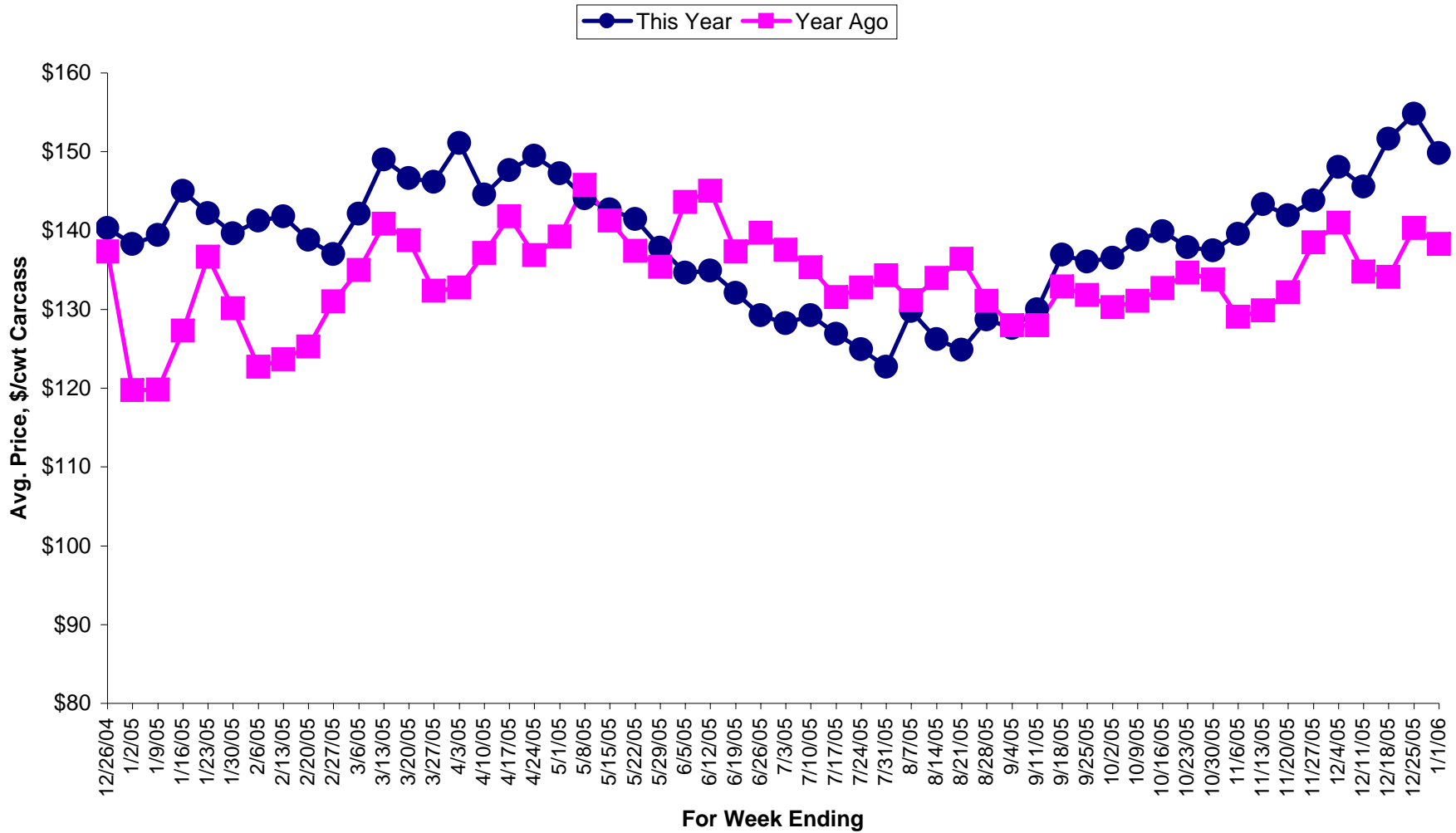
Source: 5 Area Weekly Weighted Average Direct Slaughter Cattle (Texas/Oklahoma, Kansas, Nebraska, Colorado, Iowa/Minnesota feedlots), USDA Market News Service.

Average Price \$/cwt Carcass Weight Basis Steers, Delivered



Source: 5 Area Weekly Weighted Average Direct Slaughter Cattle (Texas/Oklahoma, Kansas, Nebraska, Colorado, Iowa/Minnesota feedlots), USDA Market News Service.

Average Price \$/cwt Carass Weight Basis Heifers, Delivered



Source: 5 Area Weekly Weighted Average Direct Slaughter Cattle (Texas/Oklahoma, Kansas, Nebraska, Colorado, Iowa/Minnesota feedlots), USDA Market News Service.

Week Ending	Number Head of Finished Cattle Marketed Live FOB or Dressed Delivered, by Week							
	Live FOB Steer		Live FOB Heifer		Dressed Del Steer		Dressed Del Heifer	
	No. Head	No. Head	No. Head	No. Head	No. Head	No. Head	No. Head	
	This Year	Year Ago	This Year	Year Ago	This Year	Year Ago	This Year	Year Ago
12/26/2004	75248	11095	60385	10833	38428	8163	17819	6191
1/2/2005	26972	35687	19547	20946	26042	17532	20728	17654
1/9/2005	64938	44739	55367	42477	41374	32863	30264	22530
1/16/2005	88951	88209	75942	77601	41360	34368	29006	31653
1/23/2005	27739	81807	31027	66828	22255	23641	12622	20457
1/30/2005	58894	52082	49414	51761	33942	19682	27651	19314
2/6/2005	65963	39123	57015	43107	31300	27624	23623	25108
2/13/2005	37066	66815	39272	62677	25201	31804	15863	31793
2/20/2005	30884	50850	37380	58394	24160	26290	23672	27026
2/27/2005	58423	81995	47081	75683	31395	33387	27685	32280
3/6/2005	76077	57964	62521	59320	33760	30574	35636	29504
3/13/2005	79382	75597	62638	64744	40883	31242	24198	23199
3/20/2005	51483	56118	33597	45005	31991	24407	21369	15185
3/27/2005	68264	53101	56821	54870	30078	29271	22692	21821
4/3/2005	62546	40028	45618	32477	32845	17383	26511	16477
4/10/2005	68440	88716	41644	78572	25700	33676	23405	27355
4/17/2005	69775	51563	47947	33061	37904	29503	20259	24680
4/24/2005	76922	80196	54071	49898	38993	37679	25366	26679
5/1/2005	63200	95810	44267	70678	40135	42692	21234	29942
5/8/2005	82574	96592	47870	74179	42276	33418	26396	27589
5/15/2005	73867	62673	47879	46580	41805	34269	25701	19140
5/22/2005	62479	75332	42234	55252	46845	30051	24560	20299
5/29/2005	51506	65703	41725	53133	38028	28681	19466	17393
6/5/2005	71784	98384	47122	75997	45335	44075	23468	28099
6/12/2005	68802	52705	43955	38881	40547	27224	23060	16649
6/19/2005	63220	66857	36938	64464	47797	27826	27156	16934
6/26/2005	66803	98916	39822	70607	51306	45181	29089	22341
7/3/2005	55711	24875	37268	24758	45275	18784	29047	7394
7/10/2005	76704	38691	47044	37447	47143	40273	28571	21557
7/17/2005	70727	65379	44083	54911	36901	36482	20613	22754
7/24/2005	79705	76152	48428	56705	41069	27899	32181	16079
7/31/2005	73699	44518	49996	37782	41050	32087	24969	19441
8/7/2005	68409	54130	42503	41761	49322	33540	28518	21621
8/14/2005	43395	86761	37630	70625	29712	42537	14412	22343
8/21/2005	76098	61026	47291	51584	49221	19265	33988	13297
8/28/2005	95145	40075	60640	33412	48712	28527	34373	17986
9/4/2005	46577	44613	37497	30845	35334	29449	21584	23649
9/11/2005	83958	69021	59559	54690	46199	33258	27593	20331
9/18/2005	91874	56346	66424	58434	36649	30684	28840	24322
9/25/2005	53037	55801	38462	53301	16617	27302	14878	23146
10/2/2005	69293	63685	53663	61562	55444	22122	31173	14516
10/9/2005	60301	66266	49700	68039	22259	25507	17135	15209
10/16/2005	53133	57370	47514	60224	40840	28365	30225	23316
10/23/2005	46727	60849	38451	67064	31063	20232	20390	19776
10/30/2005	71903	35480	57372	41464	34559	24535	25211	18572
11/6/2005	54804	46971	42508	37465	23835	23368	18337	28090
11/13/2005	57961	74126	48366	63969	30700	37753	21906	24969
11/20/2005	51187	31929	35876	35903	17205	18365	13361	12280
11/27/2005	73127	63970	43636	71564	31327	34855	24279	33264

Source: 5 Area Weekly Weighted Average Direct Slaughter Cattle (Texas/Oklahoma, Kansas, Nebraska, Colorado, Iowa/Minnesota feedlots), USDA Market News Service.

Number Head of Finished Cattle Marketed Live FOB or Dressed Delivered, by Week								
Week Ending	Live FOB Steer		Live FOB Heifer		Dressed Del Steer		Dressed Del Heifer	
	<u>No. Head</u>		<u>No. Head</u>		<u>No. Head</u>		<u>No. Head</u>	
	This Year	Year Ago	This Year	Year Ago	This Year	Year Ago	This Year	Year Ago
12/4/2005	44979	66391	30024	61367	28708	31557	26607	20033
12/11/2005	65355	38527	41371	39703	26676	38047	25315	21809
12/18/2005	80287	61033	51587	61600	48331	42999	40721	26437
12/25/2005	39269	75248	28828	60385	27492	38428	24935	17819
1/1/2006	38896	26972	31319	19547	14010	26042	18456	20728

Source: 5 Area Weekly Weighted Average Direct Slaughter Cattle (Texas/Oklahoma, Kansas, Nebraska, Colorado, Iowa/Minnesota feedlots), USDA Market News Service.

Average Weights for Finished Cattle Sold Live FOB or Dressed Delivered, by Week

Week Ending	Live FOB Steer		Live FOB Heifer		Dressed Del Steer		Dressed Del Heifer	
	<u>Avg Weight</u>		<u>Avg Weight</u>		<u>Avg Weight</u>		<u>Avg Weight</u>	
	This Year	Year Ago	This Year	Year Ago	This Year	Year Ago	This Year	Year Ago
12/26/2004	1272	1246	1160	1122	838	841	770	756
1/2/2005	1254	1246	1133	1156	843	827	762	745
1/9/2005	1263	1275	1161	1155	849	829	770	751
1/16/2005	1273	1262	1164	1150	841	832	774	763
1/23/2005	1265	1250	1141	1158	828	826	769	764
1/30/2005	1263	1254	1142	1149	848	828	768	771
2/6/2005	1264	1242	1154	1159	841	828	772	755
2/13/2005	1264	1241	1156	1132	844	830	761	758
2/20/2005	1268	1230	1174	1150	831	825	742	734
2/27/2005	1236	1239	1149	1139	841	826	767	747
3/6/2005	1254	1220	1159	1130	829	813	752	738
3/13/2005	1250	1226	1133	1123	827	799	752	731
3/20/2005	1236	1205	1122	1115	807	804	740	729
3/27/2005	1228	1197	1134	1110	808	791	735	727
4/3/2005	1227	1221	1121	1105	805	801	724	722
4/10/2005	1224	1210	1122	1105	790	791	721	726
4/17/2005	1226	1203	1113	1107	802	786	730	709
4/24/2005	1220	1201	1115	1101	801	792	721	713
5/1/2005	1229	1206	1123	1106	801	788	718	714
5/8/2005	1232	1215	1125	1109	804	788	723	713
5/15/2005	1228	1218	1124	1100	806	799	721	723
5/22/2005	1239	1223	1125	1112	808	800	733	717
5/29/2005	1251	1231	1132	1111	814	807	726	724
6/5/2005	1256	1243	1138	1118	823	808	745	728
6/12/2005	1260	1242	1149	1122	824	809	743	740
6/19/2005	1268	1247	1138	1122	826	817	747	738
6/26/2005	1281	1256	1154	1140	818	821	749	745
7/3/2005	1286	1257	1153	1142	829	829	745	716
7/10/2005	1285	1254	1161	1136	838	819	752	743
7/17/2005	1295	1281	1158	1156	838	836	762	754
7/24/2005	1291	1266	1164	1144	840	837	751	747
7/31/2005	1294	1273	1165	1146	842	835	764	748
8/7/2005	1293	1288	1160	1149	832	840	757	752
8/14/2005	1302	1284	1163	1149	832	845	751	752
8/21/2005	1306	1281	1183	1148	849	843	770	756
8/28/2005	1301	1287	1183	1156	848	851	771	761
9/4/2005	1298	1301	1170	1160	848	848	761	756
9/11/2005	1304	1292	1178	1165	845	847	778	768
9/18/2005	1309	1289	1177	1170	850	850	770	768
9/25/2005	1311	1298	1175	1165	858	857	755	767
10/2/2005	1312	1301	1186	1177	853	859	773	774
10/9/2005	1308	1292	1174	1169	863	855	763	780
10/16/2005	1312	1284	1186	1153	856	856	783	775
10/23/2005	1309	1291	1176	1172	858	855	784	770
10/30/2005	1310	1291	1187	1163	858	856	772	778
11/6/2005	1309	1298	1176	1182	862	852	765	756
11/13/2005	1310	1293	1193	1171	863	841	780	755
11/20/2005	1312	1282	1169	1183	865	851	781	754
11/27/2005	1310	1286	1183	1164	853	847	773	777

Source: 5 Area Weekly Weighted Average Direct Slaughter Cattle (Texas/Oklahoma, Kansas, Nebraska, Colorado, Iowa/Minnesota feedlots), USDA Market News Service.

Average Weights for Finished Cattle Sold Live FOB or Dressed Delivered, by Week

Week Ending	Live FOB Steer		Live FOB Heifer		Dressed Del Steer		Dressed Del Heifer	
	<u>Avg Weight</u>		<u>Avg Weight</u>		<u>Avg Weight</u>		<u>Avg Weight</u>	
	This Year	Year Ago	This Year	Year Ago	This Year	Year Ago	This Year	Year Ago
12/4/2005	1304	1263	1187	1158	858	835	774	756
12/11/2005	1298	1257	1180	1161	848	842	763	768
12/18/2005	1287	1276	1169	1168	840	848	758	771
12/25/2005	1274	1272	1175	1160	834	838	755	770
1/1/2006	1279	1254	1170	1133	835	843	737	762

Source: 5 Area Weekly Weighted Average Direct Slaughter Cattle (Texas/Oklahoma, Kansas, Nebraska, Colorado, Iowa/Minnesota feedlots), USDA Market News Service.

Average Prices Paid for Finished Cattle Sold Live FOB or Dressed Delivered, by Week

Week Ending	Live FOB Steer		Live FOB Heifer		Dressed Del Steer		Dressed Del Heifer	
	Avg Price		Avg Price		Avg Price		Avg Price	
	This Year	Year Ago	This Year	Year Ago	This Year	Year Ago	This Year	Year Ago
12/26/2004	\$89.62	\$86.01	\$89.75	\$83.36	\$140.35	\$139.79	\$140.31	\$137.33
1/2/2005	\$87.58	\$74.59	\$87.85	\$74.17	\$138.27	\$120.05	\$138.30	\$119.73
1/9/2005	\$87.84	\$74.49	\$87.98	\$74.61	\$139.58	\$120.32	\$139.46	\$119.81
1/16/2005	\$91.53	\$78.98	\$91.67	\$79.02	\$145.00	\$127.51	\$145.01	\$127.28
1/23/2005	\$89.33	\$85.67	\$89.75	\$85.78	\$142.93	\$136.74	\$142.22	\$136.68
1/30/2005	\$88.21	\$80.38	\$88.56	\$80.44	\$139.78	\$129.54	\$139.60	\$130.14
2/6/2005	\$90.11	\$75.26	\$90.29	\$75.59	\$141.47	\$123.27	\$141.27	\$122.67
2/13/2005	\$89.49	\$77.28	\$89.66	\$77.35	\$141.66	\$123.93	\$141.76	\$123.61
2/20/2005	\$87.63	\$78.71	\$87.89	\$78.85	\$138.99	\$125.44	\$138.81	\$125.26
2/27/2005	\$86.75	\$81.86	\$86.84	\$82.02	\$136.97	\$131.08	\$137.03	\$130.98
3/6/2005	\$89.86	\$84.95	\$89.96	\$84.98	\$142.17	\$135.15	\$142.10	\$134.96
3/13/2005	\$92.91	\$87.71	\$93.07	\$87.84	\$149.10	\$140.60	\$149.00	\$140.84
3/20/2005	\$90.11	\$86.53	\$90.28	\$86.70	\$147.22	\$139.29	\$146.63	\$138.78
3/27/2005	\$90.17	\$82.84	\$90.24	\$82.86	\$146.20	\$132.68	\$146.19	\$132.37
4/3/2005	\$92.61	\$83.67	\$92.55	\$83.78	\$151.66	\$133.16	\$151.07	\$132.72
4/10/2005	\$90.03	\$86.08	\$90.19	\$86.03	\$144.59	\$137.05	\$144.54	\$137.11
4/17/2005	\$91.89	\$86.88	\$91.97	\$86.53	\$147.50	\$142.07	\$147.65	\$141.81
4/24/2005	\$93.86	\$85.12	\$93.96	\$85.20	\$149.73	\$137.38	\$149.46	\$136.89
5/1/2005	\$92.56	\$86.94	\$92.72	\$86.91	\$148.18	\$139.70	\$147.26	\$139.20
5/8/2005	\$90.56	\$90.84	\$90.71	\$90.65	\$144.51	\$146.14	\$144.06	\$145.74
5/15/2005	\$90.07	\$87.46	\$90.11	\$87.31	\$142.56	\$141.50	\$142.69	\$141.28
5/22/2005	\$88.75	\$86.03	\$88.89	\$86.05	\$141.58	\$137.60	\$141.44	\$137.38
5/29/2005	\$86.80	\$85.15	\$86.90	\$85.15	\$138.10	\$135.55	\$137.84	\$135.39
6/5/2005	\$85.57	\$89.75	\$85.48	\$89.70	\$134.62	\$143.47	\$134.63	\$143.61
6/12/2005	\$85.57	\$89.98	\$85.56	\$90.09	\$134.83	\$144.95	\$134.90	\$145.02
6/19/2005	\$83.58	\$86.99	\$83.63	\$87.01	\$132.07	\$137.49	\$132.09	\$137.31
6/26/2005	\$82.10	\$89.55	\$82.18	\$89.54	\$129.17	\$140.20	\$129.24	\$139.70
7/3/2005	\$81.44	\$87.58	\$81.52	\$87.51	\$128.14	\$137.68	\$128.25	\$137.56
7/10/2005	\$81.84	\$85.45	\$81.92	\$85.54	\$128.98	\$135.29	\$129.27	\$135.33
7/17/2005	\$80.14	\$82.68	\$80.21	\$82.63	\$126.86	\$131.41	\$126.91	\$131.52
7/24/2005	\$79.01	\$84.69	\$79.08	\$84.70	\$124.82	\$132.58	\$124.92	\$132.75
7/31/2005	\$79.52	\$84.57	\$79.65	\$84.59	\$123.04	\$134.28	\$122.69	\$134.29
8/7/2005	\$82.08	\$82.18	\$82.20	\$82.20	\$129.63	\$131.28	\$129.79	\$131.14
8/14/2005	\$79.57	\$84.42	\$79.62	\$84.44	\$126.38	\$133.92	\$126.22	\$133.99
8/21/2005	\$79.07	\$86.89	\$79.07	\$87.05	\$124.77	\$136.76	\$124.83	\$136.42
8/28/2005	\$81.70	\$82.22	\$81.86	\$82.21	\$128.28	\$131.10	\$128.67	\$131.09
9/4/2005	\$81.08	\$80.18	\$81.11	\$80.24	\$127.37	\$127.85	\$127.63	\$127.93
9/11/2005	\$83.30	\$81.50	\$83.25	\$81.64	\$129.92	\$127.82	\$129.98	\$127.99
9/18/2005	\$86.19	\$84.32	\$86.39	\$84.45	\$136.47	\$132.61	\$136.91	\$132.88
9/25/2005	\$86.00	\$83.78	\$86.15	\$83.99	\$135.29	\$131.77	\$136.04	\$131.79
10/2/2005	\$86.83	\$83.52	\$86.92	\$83.74	\$135.95	\$129.88	\$136.50	\$130.23
10/9/2005	\$88.55	\$83.69	\$88.81	\$83.88	\$137.74	\$130.52	\$138.82	\$131.03
10/16/2005	\$88.68	\$85.53	\$88.83	\$85.64	\$139.57	\$132.54	\$139.88	\$132.70
10/23/2005	\$87.47	\$85.91	\$87.71	\$86.08	\$137.65	\$133.76	\$137.87	\$134.63
10/30/2005	\$87.21	\$84.66	\$87.32	\$84.84	\$136.64	\$133.21	\$137.47	\$133.78
11/6/2005	\$89.06	\$81.61	\$89.42	\$81.82	\$137.99	\$128.93	\$139.56	\$129.02
11/13/2005	\$91.24	\$84.19	\$91.39	\$84.32	\$142.64	\$129.84	\$143.32	\$129.85
11/20/2005	\$89.95	\$84.62	\$90.01	\$84.62	\$141.58	\$131.50	\$141.91	\$132.17
11/27/2005	\$90.97	\$88.33	\$90.98	\$88.52	\$143.42	\$138.54	\$143.78	\$138.47

Source: 5 Area Weekly Weighted Average Direct Slaughter Cattle (Texas/Oklahoma, Kansas, Nebraska, Colorado, Iowa/Minnesota feedlots), USDA Market News Service.

Average Prices Paid for Finished Cattle Sold Live FOB or Dressed Delivered, by Week

Week Ending	Live FOB Steer		Live FOB Heifer		Dressed Del Steer		Dressed Del Heifer	
	<u>Avg Price</u>		<u>Avg Price</u>		<u>Avg Price</u>		<u>Avg Price</u>	
	This Year	Year Ago	This Year	Year Ago	This Year	Year Ago	This Year	Year Ago
12/4/2005	\$92.32	\$89.83	\$92.71	\$89.91	\$147.99	\$140.83	\$148.03	\$140.99
12/11/2005	\$91.12	\$84.65	\$91.31	\$84.87	\$145.88	\$134.28	\$145.55	\$134.79
12/18/2005	\$94.44	\$85.50	\$94.48	\$85.63	\$151.72	\$134.09	\$151.64	\$134.12
12/25/2005	\$95.73	\$89.62	\$95.82	\$89.75	\$154.59	\$140.35	\$154.78	\$140.31
1/1/2006	\$93.90	\$87.58	\$94.09	\$87.85	\$150.85	\$138.27	\$149.79	\$138.30

Source: 5 Area Weekly Weighted Average Direct Slaughter Cattle (Texas/Oklahoma, Kansas, Nebraska, Colorado, Iowa/Minnesota feedlots), USDA Market News Service.