

## 2006 MARKETING YEAR

Having knowledge of accurate and current marketing information can assist beef cattle producers in making management decisions in their operations. The USDA Market News Service, St. Joseph, MO, provides numerous reports for various markets throughout the US. One report, "5 Area Weekly Weighted Average Direct Slaughter Cattle," reports marketings, weights, and prices of feedlot cattle from Texas/Oklahoma, Kansas, Nebraska, Colorado, and Iowa/Minnesota. The report covers steers and heifers that were marketed on a live or dressed basis. The report is updated weekly and covers the previous week's marketings. A summary is provided showing the most recent week, last week, and year ago data.

The information used for this web page utilizes the summary data. Charts are provided for number head marketed, live and dressed weights, and prices. For the 2006 marketing year, charts begin with the week ending January 1, 2006. The charts include weekly data through the week ending December 31, 2006. The numerical data used in the charts is also available in table form.

The weekly USDA report contains detailed information relating to percentage of choice grade cattle, numbers, weights, and prices. For the detailed report, go to [http://www.ams.usda.gov/mnreports/lm\\_ct150.txt](http://www.ams.usda.gov/mnreports/lm_ct150.txt).

Other reports which are available include:

"5 Area Weekly Weighted Average Direct Slaughter Cattle - Premiums and Discounts" at [http://www.ams.usda.gov/mnreports/lm\\_ct169.txt](http://www.ams.usda.gov/mnreports/lm_ct169.txt)

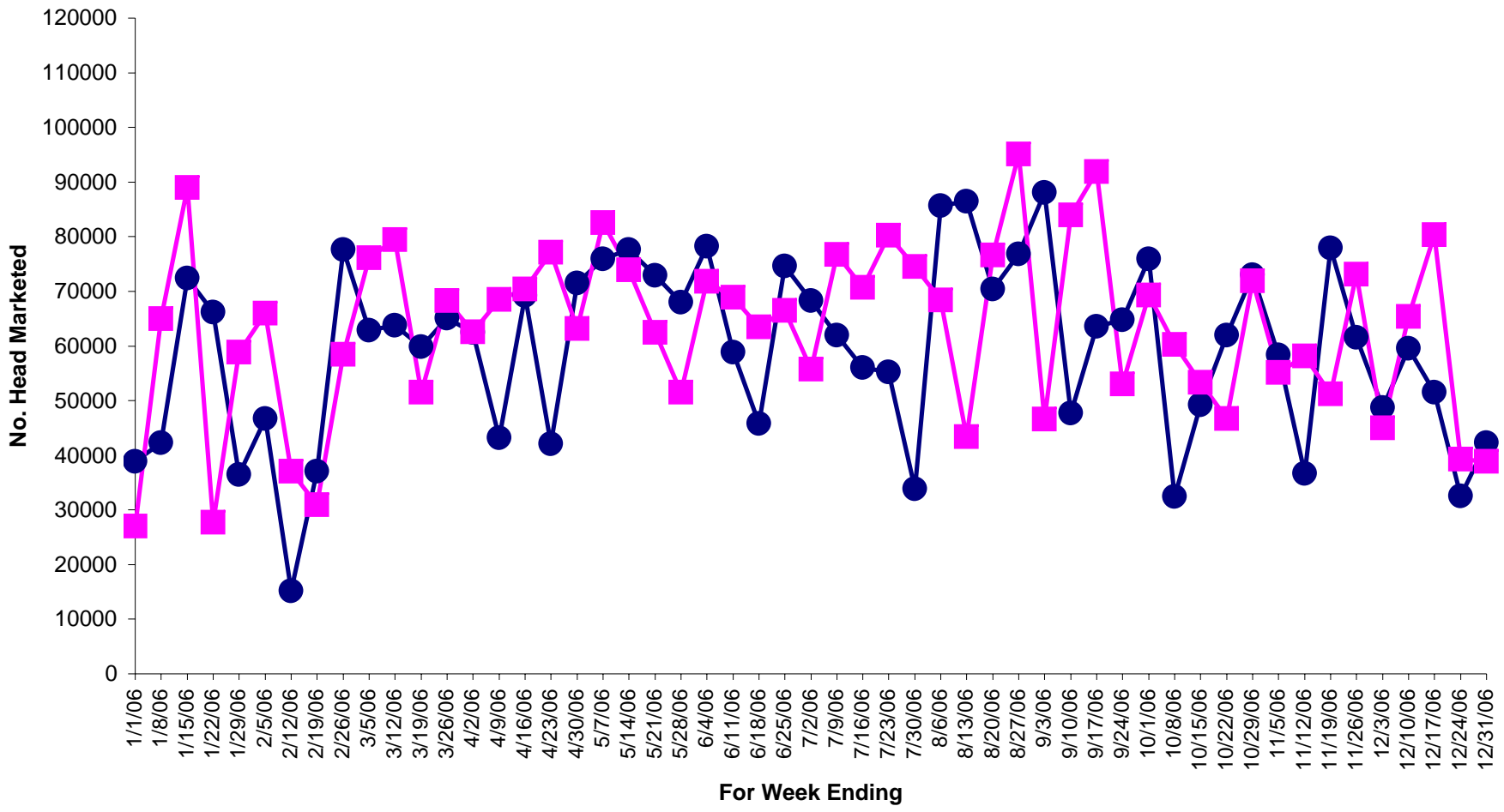
"National Weekly Direct Slaughter Cattle - Premiums and Discounts" at [http://www.ams.usda.gov/mnreports/lm\\_ct155.txt](http://www.ams.usda.gov/mnreports/lm_ct155.txt)

"Eastern Cornbelt Direct Feeder Cattle Summary" at [http://www.ams.usda.gov/mnreports/qx\\_LS161.txt](http://www.ams.usda.gov/mnreports/qx_LS161.txt).

Many more reports can be accessed from the USDA Agricultural Marketing Service's Livestock and Grain Market News web site at <http://www.ams.usda.gov/lsmnpubs/>.

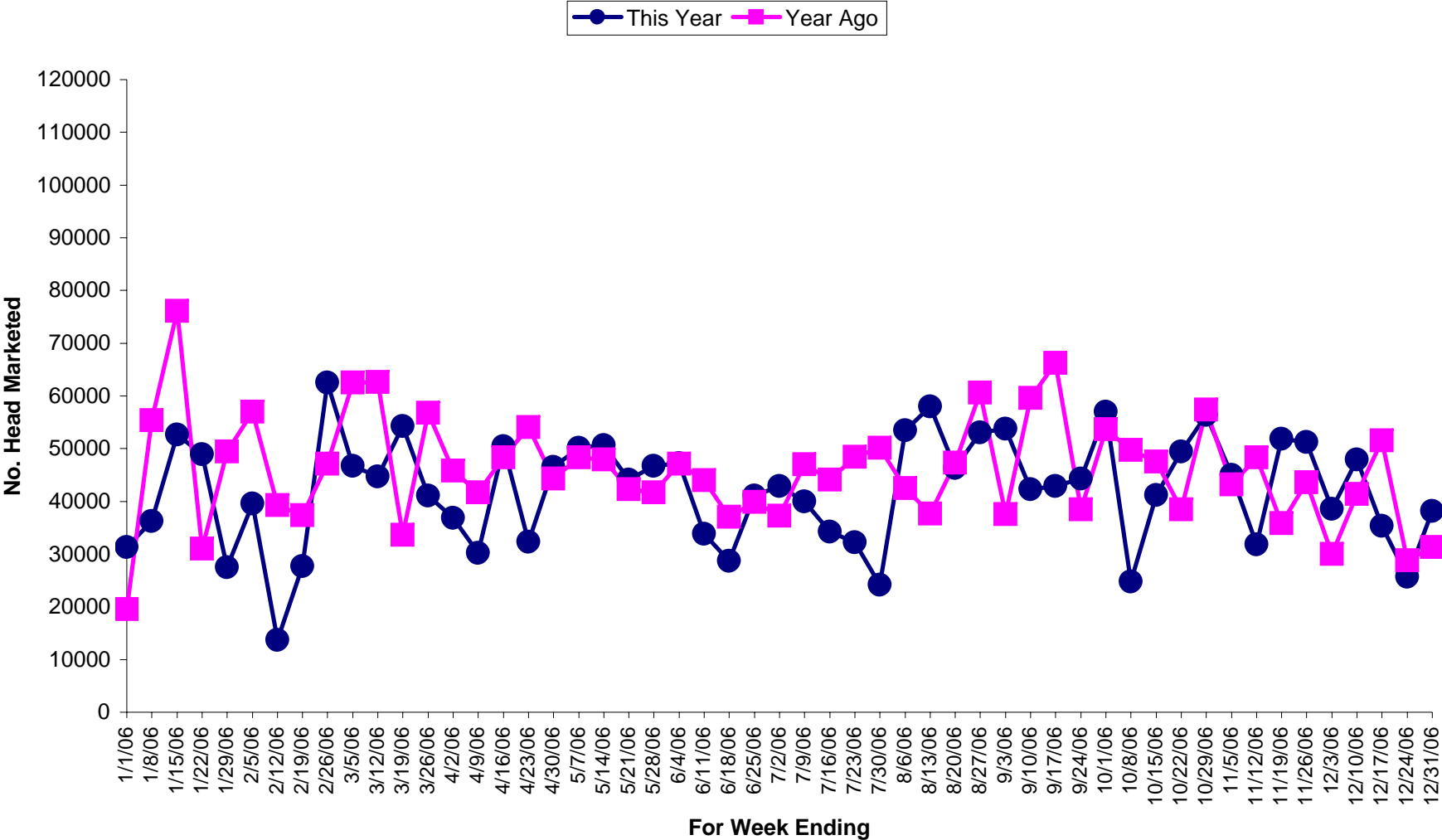
### Number Head Marketed Steers, Live FOB

● This Year    ■ Year Ago



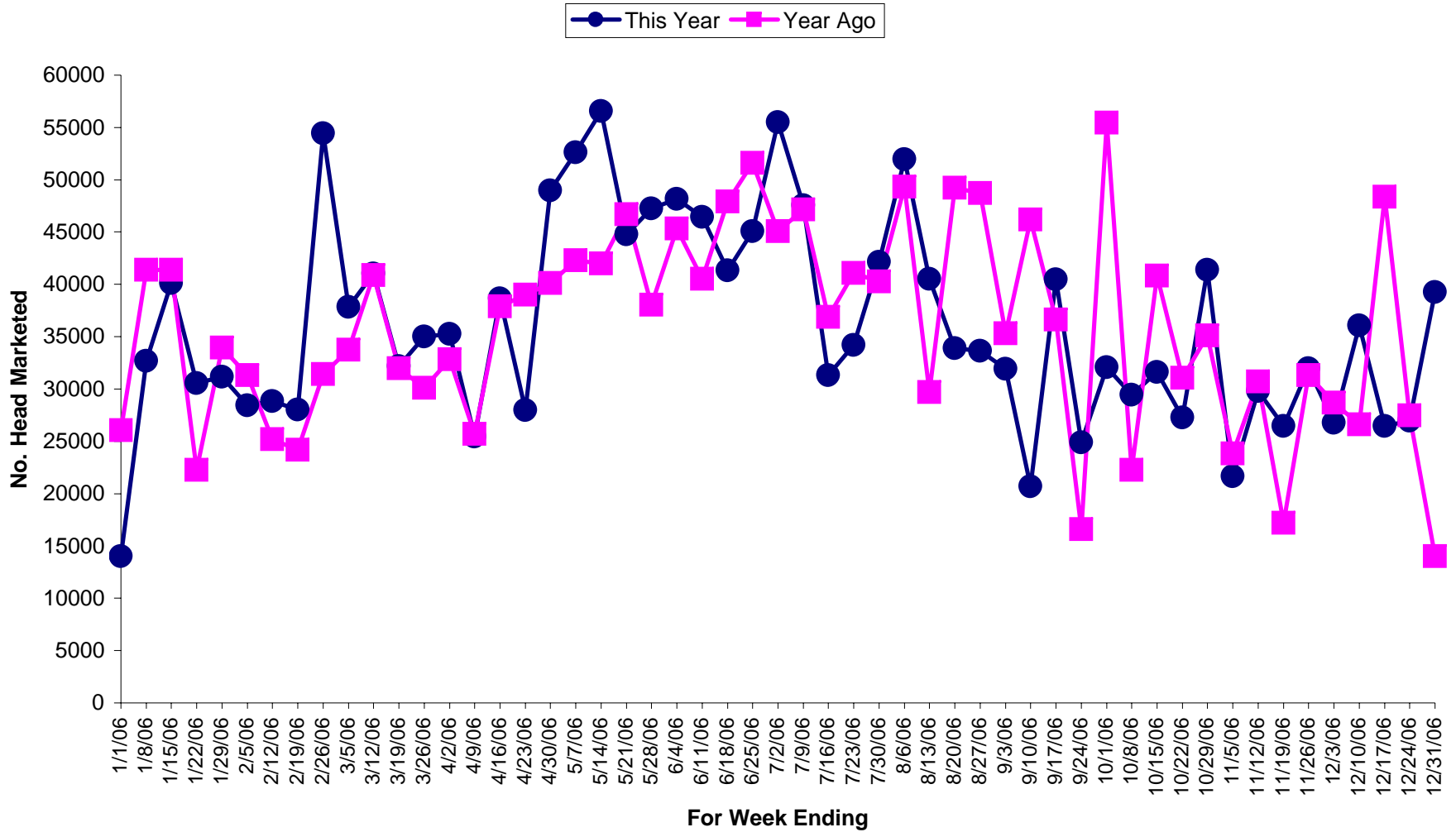
Source: 5 Area Weekly Weighted Average Direct Slaughter Cattle (Texas/Oklahoma, Kansas, Nebraska, Colorado, Iowa/Minnesota feedlots), USDA Market News Service.

### Number Head Marketed Heifers, Live FOB



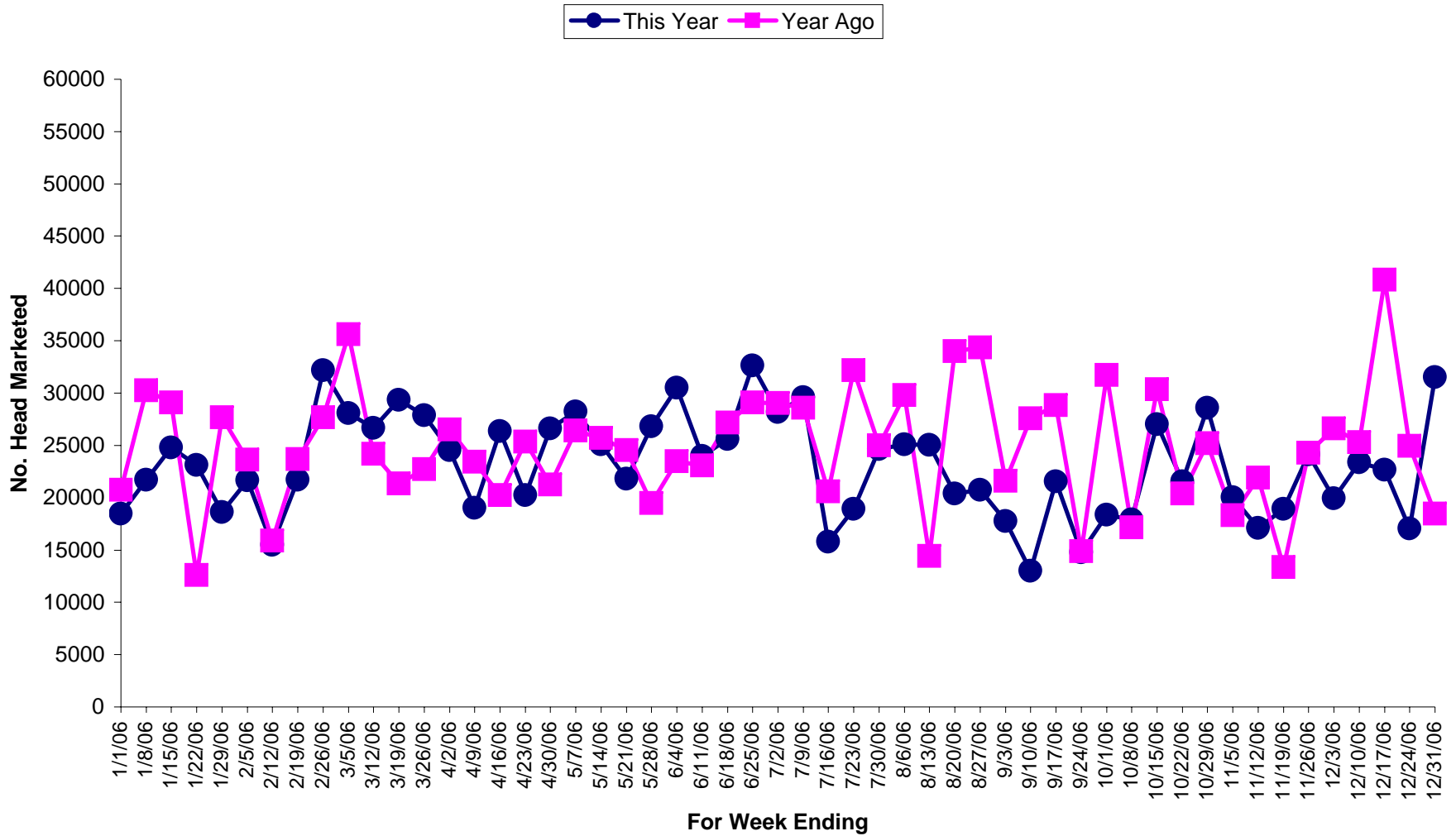
Source: 5 Area Weekly Weighted Average Direct Slaughter Cattle (Texas/Oklahoma, Kansas, Nebraska, Colorado, Iowa/Minnesota feedlots), USDA Market News Service.

## Number Head Marketed Steers, Dressed Delivered



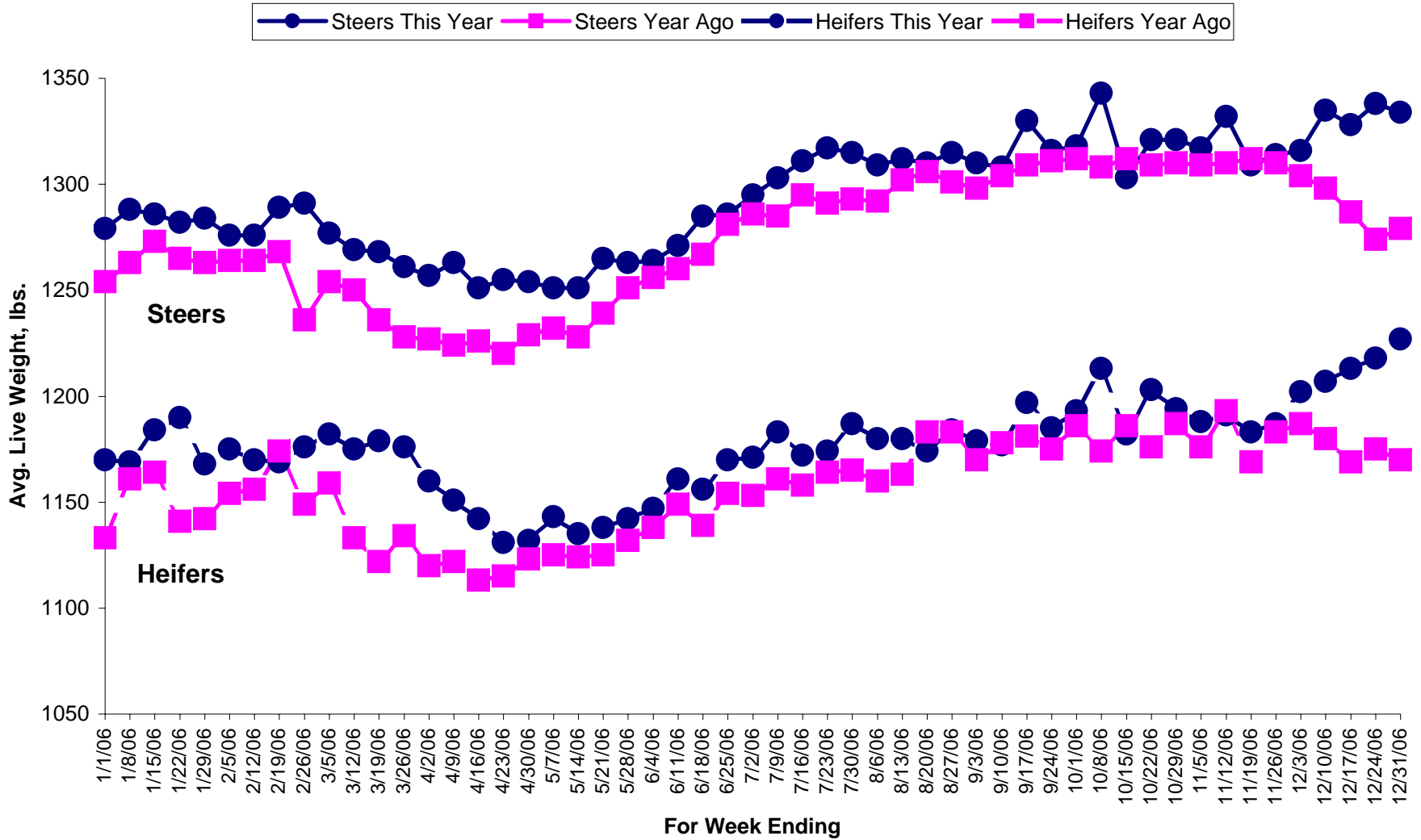
Source: 5 Area Weekly Weighted Average Direct Slaughter Cattle (Texas/Oklahoma, Kansas, Nebraska, Colorado, Iowa/Minnesota feedlots), USDA Market News Service.

## Number Head Marketed Heifers, Dressed Delivered



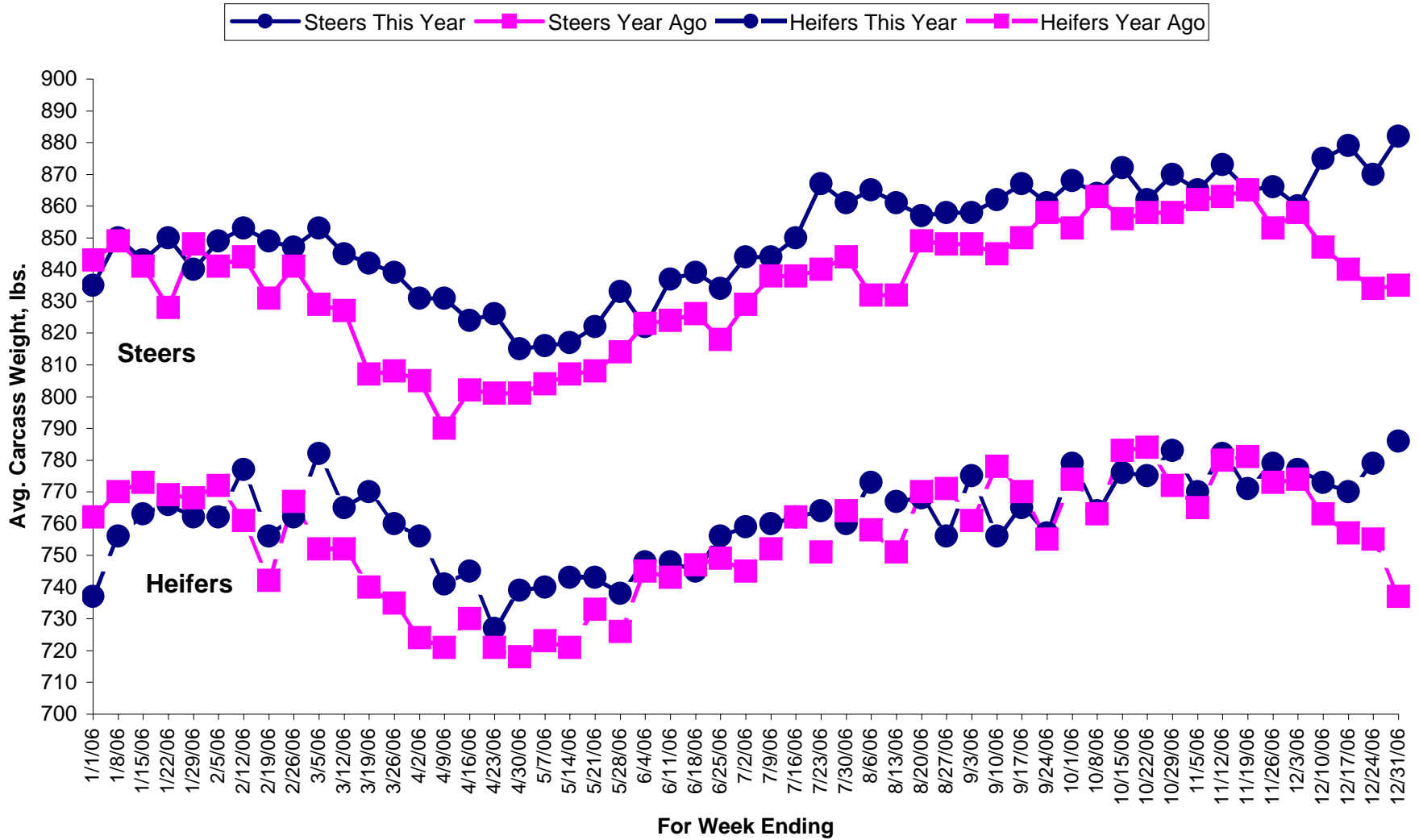
Source: 5 Area Weekly Weighted Average Direct Slaughter Cattle (Texas/Oklahoma, Kansas, Nebraska, Colorado, Iowa/Minnesota feedlots), USDA Market News Service.

## Average Live Weight FOB



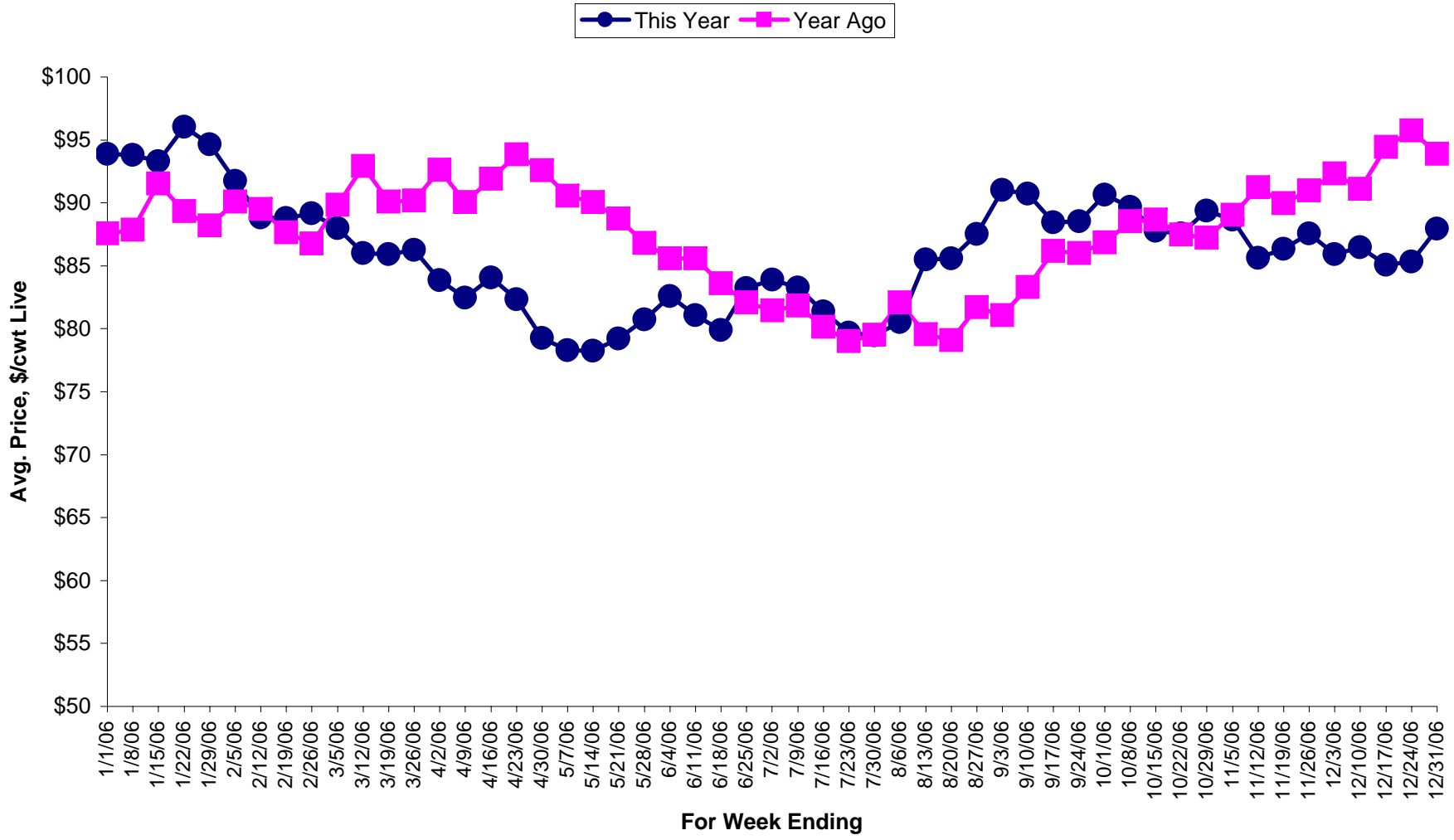
Source: 5 Area Weekly Weighted Average Direct Slaughter Cattle (Texas/Oklahoma, Kansas, Nebraska, Colorado, Iowa/Minnesota feedlots), USDA Market News Service.

## Average Carcass Weight Dressed



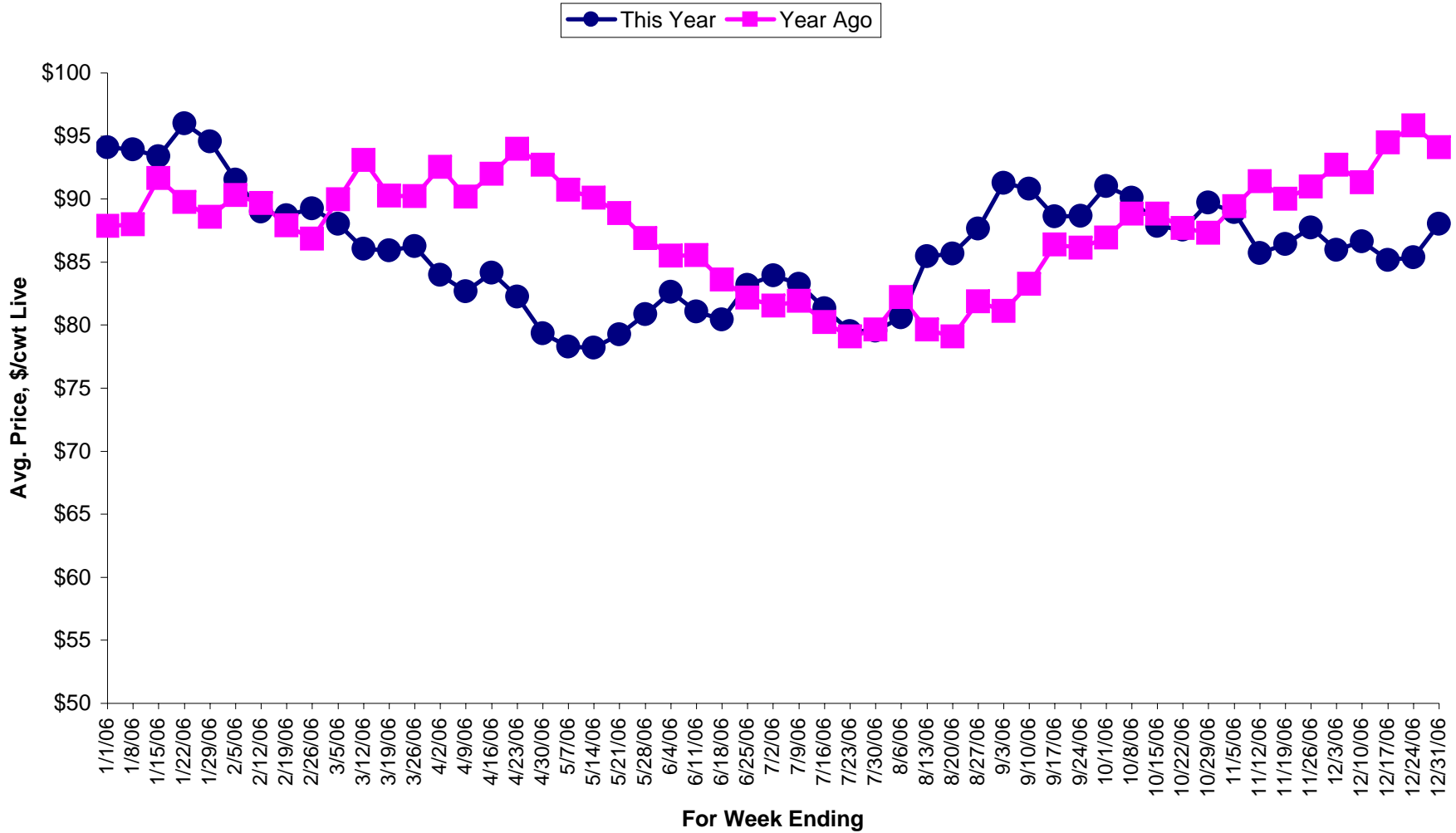
Source: 5 Area Weekly Weighted Average Direct Slaughter Cattle (Texas/Oklahoma, Kansas, Nebraska, Colorado, Iowa/Minnesota feedlots), USDA Market News Service.

### Average Price \$/cwt Steers, Live FOB



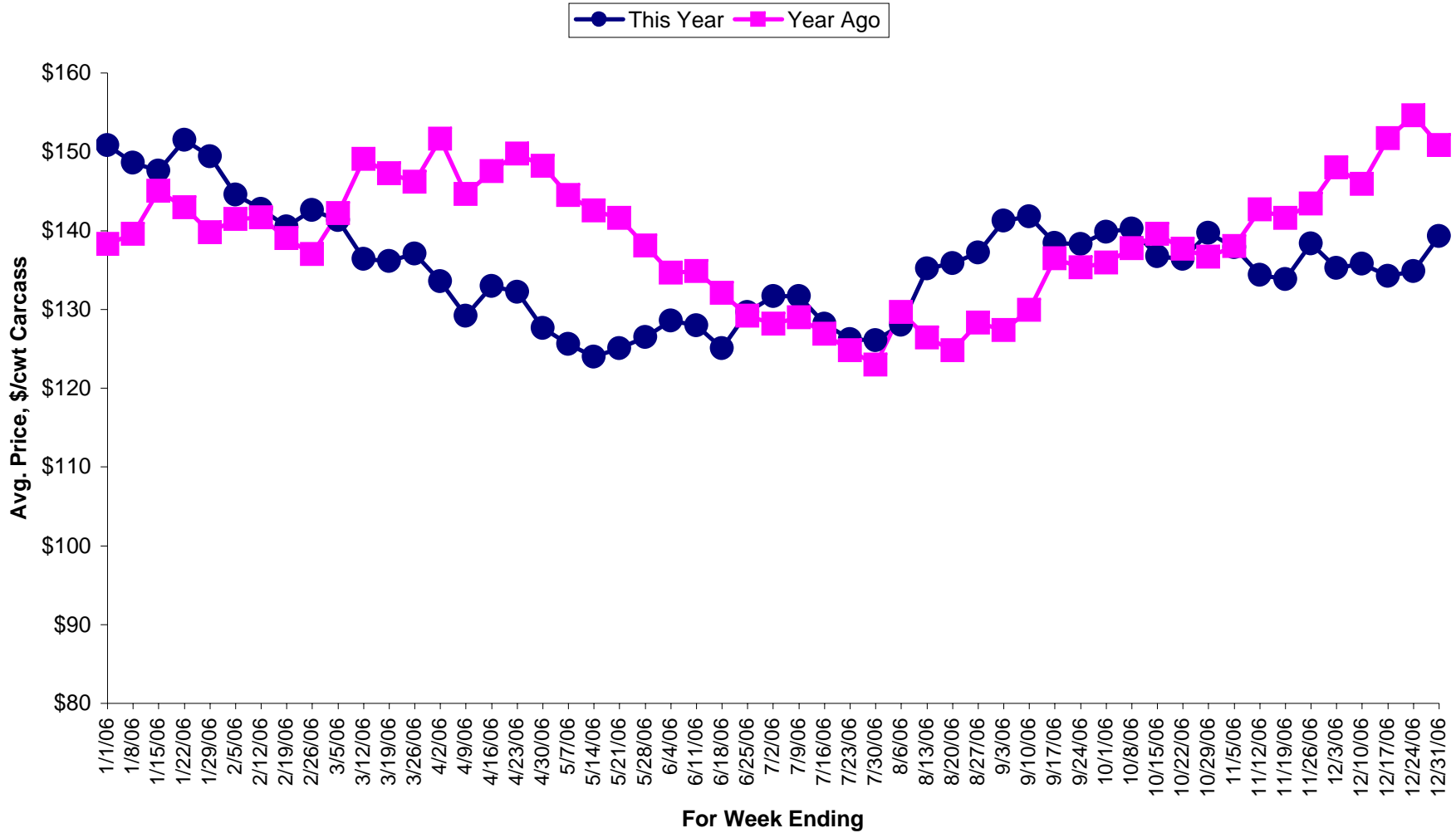
Source: 5 Area Weekly Weighted Average Direct Slaughter Cattle (Texas/Oklahoma, Kansas, Nebraska, Colorado, Iowa/Minnesota feedlots), USDA Market News Service.

### Average Price \$/cwt Heifers, Live FOB



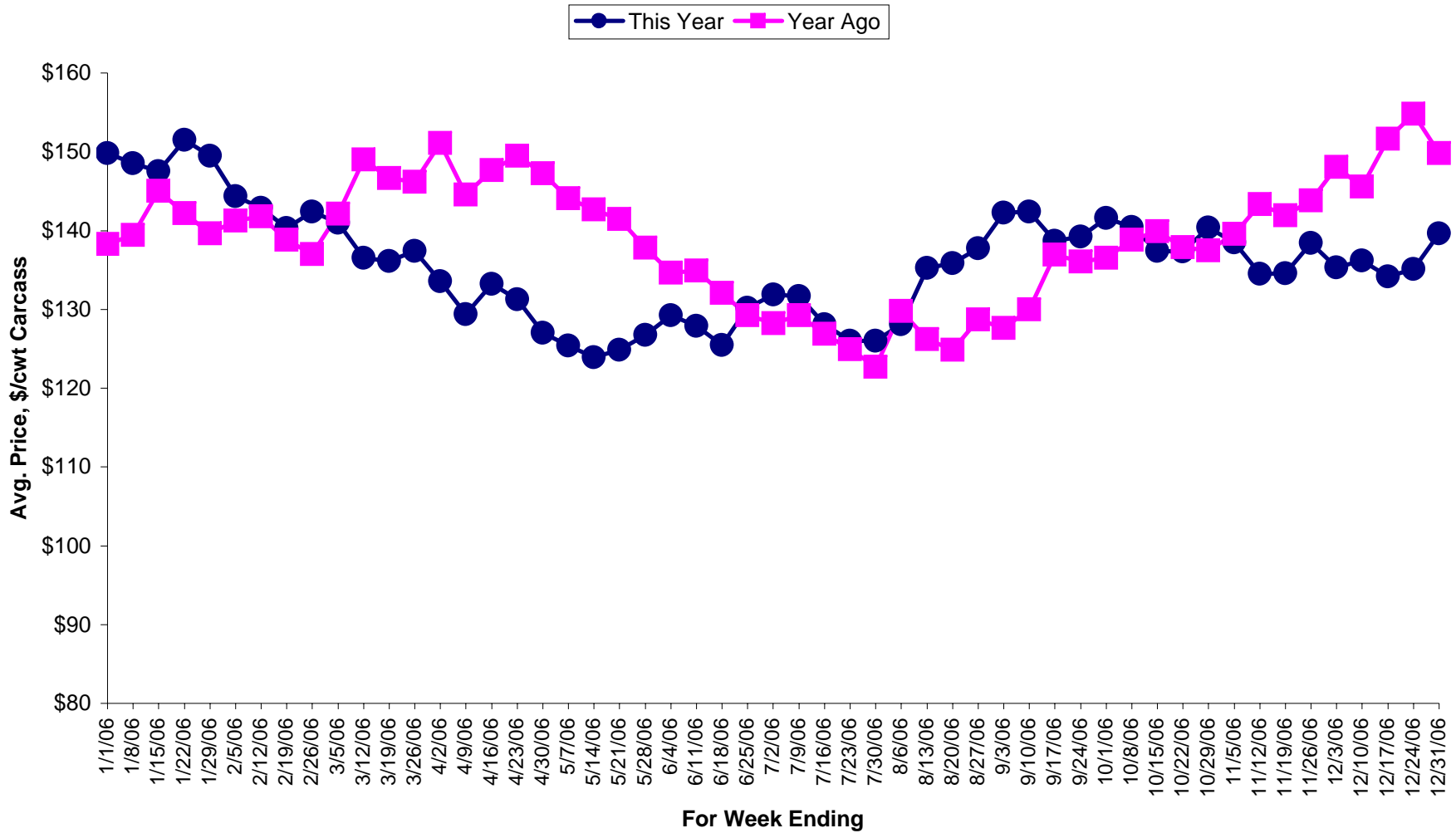
Source: 5 Area Weekly Weighted Average Direct Slaughter Cattle (Texas/Oklahoma, Kansas, Nebraska, Colorado, Iowa/Minnesota feedlots), USDA Market News Service.

## Average Price \$/cwt Carcass Weight Basis Steers, Delivered



Source: 5 Area Weekly Weighted Average Direct Slaughter Cattle (Texas/Oklahoma, Kansas, Nebraska, Colorado, Iowa/Minnesota feedlots), USDA Market News Service.

### Average Price \$/cwt Carass Weight Basis Heifers, Delivered



Source: 5 Area Weekly Weighted Average Direct Slaughter Cattle (Texas/Oklahoma, Kansas, Nebraska, Colorado, Iowa/Minnesota feedlots), USDA Market News Service.

Week Ending	Number Head of Finished Cattle Marketed Live FOB or Dressed Delivered, by Week							
	Live FOB Steer		Live FOB Heifer		Dressed Del Steer		Dressed Del Heifer	
	No. Head	No. Head	No. Head	No. Head	No. Head	No. Head	No. Head	
	This Year	Year Ago	This Year	Year Ago	This Year	Year Ago	This Year	Year Ago
1/1/2006	38896	26972	31319	19547	14010	26042	18456	20728
1/8/2006	42266	64938	36205	55367	32694	41374	21720	30264
1/15/2006	72408	88951	52640	76087	40113	41360	24804	29077
1/22/2006	66162	27739	48930	31027	30535	22255	23125	12622
1/29/2006	36430	58894	27479	49414	31139	33942	18613	27651
2/5/2006	46680	65963	39602	57015	28448	31300	21647	23623
2/12/2006	15169	37066	13735	39272	28844	25201	15483	15863
2/19/2006	37035	30884	27728	37380	28033	24160	21713	23672
2/26/2006	77603	58423	62555	47081	54444	31395	32152	27685
3/5/2006	62823	76077	46749	62521	37844	33760	28084	35636
3/12/2006	63803	79382	44652	62638	41019	40883	26674	24198
3/19/2006	59890	51483	54226	33597	32169	31991	29345	21369
3/26/2006	65075	68264	41090	56821	34984	30078	27889	22692
4/2/2006	62424	62546	36818	45788	35272	32845	24556	26511
4/9/2006	43176	68440	30180	41644	25468	25700	19045	23405
4/16/2006	69212	70345	50389	48285	38673	37904	26372	20259
4/23/2006	42073	77121	32357	54071	27954	38993	20243	25366
4/30/2006	71495	63200	46536	44267	48993	40132	26621	21234
5/7/2006	75914	82574	50113	48363	52632	42276	28205	26396
5/14/2006	77579	73942	50605	47879	56568	42001	25110	25701
5/21/2006	72912	62479	44113	42234	44773	46697	21803	24560
5/28/2006	67995	51506	46731	41725	47258	38028	26798	19466
6/4/2006	78240	71784	47252	47122	48143	45335	30487	23468
6/11/2006	58806	68844	33786	43979	46417	40541	23976	23060
6/18/2006	45773	63419	28674	37031	41331	47890	25588	27156
6/25/2006	74611	66440	41080	39822	45063	51599	32628	29089
7/2/2006	68259	55711	42881	37268	55473	45085	28184	29047
7/9/2006	61908	76704	39995	47044	47553	47143	29579	28571
7/16/2006	56010	70727	34217	44083	31314	36901	15807	20613
7/23/2006	55183	80185	32201	48428	34203	41069	18933	32181
7/30/2006	33824	74489	24114	50164	42138	40260	24651	24969
8/6/2006	85684	68337	53450	42503	51943	49322	25091	29818
8/13/2006	86412	43395	58005	37630	40530	29712	25060	14412
8/20/2006	70363	76572	46329	47291	33873	49221	20368	33988
8/27/2006	76827	95145	53062	60640	33652	48712	20746	34373
9/3/2006	88053	46586	53762	37554	31934	35334	17780	21584
9/10/2006	47707	83958	42308	59559	20700	46199	13026	27593
9/17/2006	63608	91874	42924	66231	40474	36649	21545	28840
9/24/2006	64786	53037	44281	38462	24901	16617	14761	14878
10/1/2006	75913	69293	56995	53663	32077	55444	18386	31701
10/8/2006	32402	60301	24741	49700	29435	22259	17920	17135
10/15/2006	49236	53291	41215	47514	31637	40840	27030	30365
10/22/2006	61912	46727	49448	38451	27271	31063	21534	20390
10/29/2006	72973	71903	56406	57372	41371	35125	28602	25211
11/5/2006	58388	55159	45004	43222	21644	23824	20043	18337
11/12/2006	36614	58121	31809	48366	29780	30699	17122	21906
11/19/2006	77970	51187	51860	35876	26444	17200	18941	13361
11/26/2006	61525	73127	51198	43636	31968	31323	24137	24279
12/3/2006	48747	44979	38571	30024	26756	28708	19912	26607

Source: 5 Area Weekly Weighted Average Direct Slaughter Cattle (Texas/Oklahoma, Kansas, Nebraska, Colorado, Iowa/Minnesota feedlots), USDA Market News Service.

Number Head of Finished Cattle Marketed Live FOB or Dressed Delivered, by Week								
Week Ending	Live FOB Steer		Live FOB Heifer		Dressed Del Steer		Dressed Del Heifer	
	<u>No. Head</u>		<u>No. Head</u>		<u>No. Head</u>		<u>No. Head</u>	
	This Year	Year Ago	This Year	Year Ago	This Year	Year Ago	This Year	Year Ago
12/10/2006	59512	65355	47886	41371	36092	26633	23380	25315
12/17/2006	51501	80287	35299	51587	26436	48369	22689	40851
12/24/2006	32570	39269	25690	28828	26977	27492	17026	24935
12/31/2006	42255	38896	38177	31319	39246	14010	31511	18448

Source: 5 Area Weekly Weighted Average Direct Slaughter Cattle (Texas/Oklahoma, Kansas, Nebraska, Colorado, Iowa/Minnesota feedlots), USDA Market News Service.

## Average Weights for Finished Cattle Sold Live FOB or Dressed Delivered, by Week

Week Ending	Live FOB Steer		Live FOB Heifer		Dressed Del Steer		Dressed Del Heifer	
	<u>Avg Weight</u>		<u>Avg Weight</u>		<u>Avg Weight</u>		<u>Avg Weight</u>	
	This Year	Year Ago	This Year	Year Ago	This Year	Year Ago	This Year	Year Ago
1/1/2006	1279	1254	1170	1133	835	843	737	762
1/8/2006	1288	1263	1169	1161	850	849	756	770
1/15/2006	1286	1273	1184	1164	843	841	763	773
1/22/2006	1282	1265	1190	1141	850	828	766	769
1/29/2006	1284	1263	1168	1142	840	848	762	768
2/5/2006	1276	1264	1175	1154	849	841	762	772
2/12/2006	1276	1264	1170	1156	853	844	777	761
2/19/2006	1289	1268	1169	1174	849	831	756	742
2/26/2006	1291	1236	1176	1149	847	841	762	767
3/5/2006	1277	1254	1182	1159	853	829	782	752
3/12/2006	1269	1250	1175	1133	845	827	765	752
3/19/2006	1268	1236	1179	1122	842	807	770	740
3/26/2006	1261	1228	1176	1134	839	808	760	735
4/2/2006	1257	1227	1160	1120	831	805	756	724
4/9/2006	1263	1224	1151	1122	831	790	741	721
4/16/2006	1251	1226	1142	1113	824	802	745	730
4/23/2006	1255	1220	1131	1115	826	801	727	721
4/30/2006	1254	1229	1132	1123	815	801	739	718
5/7/2006	1251	1232	1143	1125	816	804	740	723
5/14/2006	1251	1228	1135	1124	817	807	743	721
5/21/2006	1265	1239	1138	1125	822	808	743	733
5/28/2006	1263	1251	1142	1132	833	814	738	726
6/4/2006	1264	1256	1147	1138	822	823	748	745
6/11/2006	1271	1260	1161	1149	837	824	748	743
6/18/2006	1285	1267	1156	1139	839	826	745	747
6/25/2006	1286	1281	1170	1154	834	818	756	749
7/2/2006	1295	1286	1171	1153	844	829	759	745
7/9/2006	1303	1285	1183	1161	844	838	760	752
7/16/2006	1311	1295	1172	1158	850	838	762	762
7/23/2006	1317	1291	1174	1164	867	840	764	751
7/30/2006	1315	1293	1187	1165	861	844	760	764
8/6/2006	1309	1292	1180	1160	865	832	773	758
8/13/2006	1312	1302	1180	1163	861	832	767	751
8/20/2006	1310	1306	1174	1183	857	849	768	770
8/27/2006	1315	1301	1184	1183	858	848	756	771
9/3/2006	1310	1298	1179	1170	858	848	775	761
9/10/2006	1308	1304	1177	1178	862	845	756	778
9/17/2006	1330	1309	1197	1181	867	850	765	770
9/24/2006	1316	1311	1185	1175	861	858	757	755
10/1/2006	1318	1312	1193	1186	868	853	779	774
10/8/2006	1343	1308	1213	1174	864	863	764	763
10/15/2006	1303	1312	1182	1186	872	856	776	783
10/22/2006	1321	1309	1203	1176	862	858	775	784
10/29/2006	1321	1310	1194	1187	870	858	783	772
11/5/2006	1317	1309	1188	1176	865	862	770	765
11/12/2006	1332	1310	1191	1193	873	863	782	780
11/19/2006	1309	1312	1183	1169	865	865	771	781
11/26/2006	1314	1310	1187	1183	866	853	779	773
12/3/2006	1316	1304	1202	1187	860	858	777	774

Source: 5 Area Weekly Weighted Average Direct Slaughter Cattle (Texas/Oklahoma, Kansas, Nebraska, Colorado, Iowa/Minnesota feedlots), USDA Market News Service.

Average Weights for Finished Cattle Sold Live FOB or Dressed Delivered, by Week

Week Ending	Live FOB Steer		Live FOB Heifer		Dressed Del Steer		Dressed Del Heifer	
	<u>Avg Weight</u>		<u>Avg Weight</u>		<u>Avg Weight</u>		<u>Avg Weight</u>	
	This Year	Year Ago	This Year	Year Ago	This Year	Year Ago	This Year	Year Ago
12/10/2006	1335	1298	1207	1180	875	847	773	763
12/17/2006	1328	1287	1213	1169	879	840	770	757
12/24/2006	1338	1274	1218	1175	870	834	779	755
12/31/2006	1334	1279	1227	1170	882	835	786	737

Note: Reported liveweights for 2/12 were 1376 for steers and 1270 for heifers.  
 It was assumed that this was an error in reporting, so weights were reduced by 100 lbs.

## Average Prices Paid for Finished Cattle Sold Live FOB or Dressed Delivered, by Week

Week Ending	Live FOB Steer		Live FOB Heifer		Dressed Del Steer		Dressed Del Heifer	
	Avg Price		Avg Price		Avg Price		Avg Price	
	This Year	Year Ago	This Year	Year Ago	This Year	Year Ago	This Year	Year Ago
1/1/2006	\$93.90	\$87.58	\$94.09	\$87.85	\$150.85	\$138.27	\$149.79	\$138.30
1/8/2006	\$93.79	\$87.84	\$93.93	\$87.98	\$148.57	\$139.58	\$148.54	\$139.46
1/15/2006	\$93.28	\$91.53	\$93.37	\$91.67	\$147.58	\$145.00	\$147.53	\$145.01
1/22/2006	\$96.02	\$89.33	\$95.98	\$89.75	\$151.49	\$142.93	\$151.50	\$142.22
1/29/2006	\$94.63	\$88.21	\$94.55	\$88.56	\$149.39	\$139.78	\$149.48	\$139.60
2/5/2006	\$91.73	\$90.11	\$91.52	\$90.29	\$144.55	\$141.47	\$144.38	\$141.27
2/12/2006	\$88.83	\$89.49	\$89.00	\$89.66	\$142.75	\$141.66	\$142.90	\$141.76
2/19/2006	\$88.80	\$87.63	\$88.72	\$87.89	\$140.52	\$138.99	\$140.29	\$138.81
2/26/2006	\$89.15	\$86.75	\$89.23	\$86.84	\$142.57	\$136.97	\$142.40	\$137.03
3/5/2006	\$87.99	\$89.86	\$88.04	\$89.96	\$141.33	\$142.17	\$140.96	\$142.10
3/12/2006	\$85.99	\$92.91	\$86.05	\$93.07	\$136.37	\$149.10	\$136.50	\$149.00
3/19/2006	\$85.94	\$90.11	\$85.94	\$90.28	\$136.15	\$147.22	\$136.10	\$146.63
3/26/2006	\$86.24	\$90.17	\$86.25	\$90.24	\$137.04	\$146.20	\$137.41	\$146.19
4/2/2006	\$83.87	\$92.61	\$83.96	\$92.54	\$133.58	\$151.66	\$133.54	\$151.07
4/9/2006	\$82.48	\$90.03	\$82.66	\$90.19	\$129.17	\$144.59	\$129.39	\$144.54
4/16/2006	\$84.07	\$91.89	\$84.13	\$91.97	\$132.98	\$147.50	\$133.20	\$147.65
4/23/2006	\$82.34	\$93.86	\$82.24	\$93.96	\$132.18	\$149.73	\$131.27	\$149.46
4/30/2006	\$79.27	\$92.56	\$79.35	\$92.72	\$127.65	\$148.18	\$127.03	\$147.26
5/7/2006	\$78.30	\$90.56	\$78.27	\$90.71	\$125.58	\$144.51	\$125.39	\$144.06
5/14/2006	\$78.23	\$90.07	\$78.20	\$90.11	\$123.99	\$142.55	\$123.94	\$142.69
5/21/2006	\$79.22	\$88.75	\$79.27	\$88.89	\$125.05	\$141.57	\$124.84	\$141.44
5/28/2006	\$80.72	\$86.80	\$80.87	\$86.90	\$126.46	\$138.10	\$126.74	\$137.84
6/4/2006	\$82.57	\$85.57	\$82.62	\$85.48	\$128.58	\$134.62	\$129.23	\$134.63
6/11/2006	\$81.07	\$85.57	\$81.08	\$85.56	\$127.97	\$134.83	\$127.92	\$134.90
6/18/2006	\$79.89	\$83.59	\$80.43	\$83.62	\$125.08	\$132.07	\$125.45	\$132.09
6/25/2006	\$83.22	\$82.10	\$83.17	\$82.18	\$129.67	\$129.17	\$130.21	\$129.24
7/2/2006	\$83.90	\$81.44	\$83.94	\$81.52	\$131.65	\$128.14	\$131.87	\$128.25
7/9/2006	\$83.25	\$81.84	\$83.28	\$81.92	\$131.66	\$128.98	\$131.66	\$129.27
7/16/2006	\$81.35	\$80.14	\$81.32	\$80.21	\$128.13	\$126.86	\$128.11	\$126.91
7/23/2006	\$79.68	\$79.01	\$79.53	\$79.08	\$126.22	\$124.82	\$126.00	\$124.92
7/30/2006	\$79.48	\$79.51	\$79.55	\$79.65	\$126.04	\$122.99	\$125.98	\$122.69
8/6/2006	\$80.52	\$82.08	\$80.60	\$82.20	\$128.04	\$129.63	\$128.09	\$129.80
8/13/2006	\$85.48	\$79.57	\$85.46	\$79.62	\$135.17	\$126.38	\$135.24	\$126.22
8/20/2006	\$85.59	\$79.07	\$85.66	\$79.07	\$135.88	\$124.77	\$135.84	\$124.83
8/27/2006	\$87.54	\$81.70	\$87.64	\$81.86	\$137.17	\$128.28	\$137.75	\$128.67
9/3/2006	\$91.03	\$81.08	\$91.27	\$81.11	\$141.23	\$127.37	\$142.29	\$127.63
9/10/2006	\$90.74	\$83.30	\$90.82	\$83.25	\$141.81	\$129.92	\$142.42	\$129.98
9/17/2006	\$88.43	\$86.19	\$88.61	\$86.39	\$138.42	\$136.47	\$138.67	\$136.91
9/24/2006	\$88.54	\$86.00	\$88.66	\$86.15	\$138.26	\$135.29	\$139.24	\$136.04
10/1/2006	\$90.64	\$86.83	\$91.02	\$86.92	\$139.81	\$135.95	\$141.58	\$136.51
10/8/2006	\$89.68	\$88.55	\$90.08	\$88.81	\$140.26	\$137.74	\$140.46	\$138.82
10/15/2006	\$87.76	\$88.68	\$87.84	\$88.83	\$136.70	\$139.57	\$137.40	\$139.88
10/22/2006	\$87.55	\$87.47	\$87.55	\$87.71	\$136.41	\$137.65	\$137.32	\$137.87
10/29/2006	\$89.38	\$87.21	\$89.70	\$87.32	\$139.69	\$136.63	\$140.36	\$137.47
11/5/2006	\$88.67	\$89.05	\$88.95	\$89.42	\$137.90	\$137.99	\$138.48	\$139.56
11/12/2006	\$85.62	\$91.23	\$85.70	\$91.39	\$134.37	\$142.64	\$134.47	\$143.32
11/19/2006	\$86.35	\$89.95	\$86.41	\$90.01	\$133.85	\$141.58	\$134.55	\$141.91
11/26/2006	\$87.55	\$90.97	\$87.73	\$90.98	\$138.37	\$143.42	\$138.42	\$143.78
12/3/2006	\$85.92	\$92.32	\$85.95	\$92.71	\$135.22	\$147.99	\$135.34	\$148.03

Source: 5 Area Weekly Weighted Average Direct Slaughter Cattle (Texas/Oklahoma, Kansas, Nebraska, Colorado, Iowa/Minnesota feedlots), USDA Market News Service.

Average Prices Paid for Finished Cattle Sold Live FOB or Dressed Delivered, by Week

Week Ending	Live FOB Steer		Live FOB Heifer		Dressed Del Steer		Dressed Del Heifer	
	<u>Avg Price</u>		<u>Avg Price</u>		<u>Avg Price</u>		<u>Avg Price</u>	
	This Year	Year Ago	This Year	Year Ago	This Year	Year Ago	This Year	Year Ago
12/10/2006	\$86.47	\$91.12	\$86.65	\$91.31	\$135.78	\$145.88	\$136.22	\$145.55
12/17/2006	\$85.06	\$94.44	\$85.16	\$94.48	\$134.25	\$151.72	\$134.16	\$151.65
12/24/2006	\$85.31	\$95.73	\$85.36	\$95.82	\$134.86	\$154.59	\$135.10	\$154.78
12/31/2006	\$87.94	\$93.90	\$88.03	\$94.09	\$139.31	\$150.85	\$139.64	\$149.79

Source: 5 Area Weekly Weighted Average Direct Slaughter Cattle (Texas/Oklahoma, Kansas, Nebraska, Colorado, Iowa/Minnesota feedlots), USDA Market News Service.