

2007 MARKETING YEAR

Having knowledge of accurate and current marketing information can assist beef cattle producers in making management decisions in their operations. The USDA Market News Service, St. Joseph, MO, provides numerous reports for various markets throughout the US. One report, "5 Area Weekly Weighted Average Direct Slaughter Cattle," reports marketings, weights, and prices of feedlot cattle from Texas/Oklahoma, Kansas, Nebraska, Colorado, and Iowa/Minnesota. The report covers steers and heifers that were marketed on a live or dressed basis. The report is updated weekly and covers the previous week's marketings. A summary is provided showing the most recent week, last week, and year ago data.

The information used for this web page utilizes the summary data. Charts are provided for number head marketed, live and dressed weights, and prices. For the 2007 marketing year, charts begin with the week ending December 31, 2006. The charts include weekly data through the week ending December 30, 2007. The numerical data used in the charts is also available in table form.

The weekly USDA report contains detailed information relating to percentage of choice grade cattle, numbers, weights, and prices. For the detailed report, go to http://www.ams.usda.gov/mnreports/lm_ct150.txt.

Other reports which are available include:

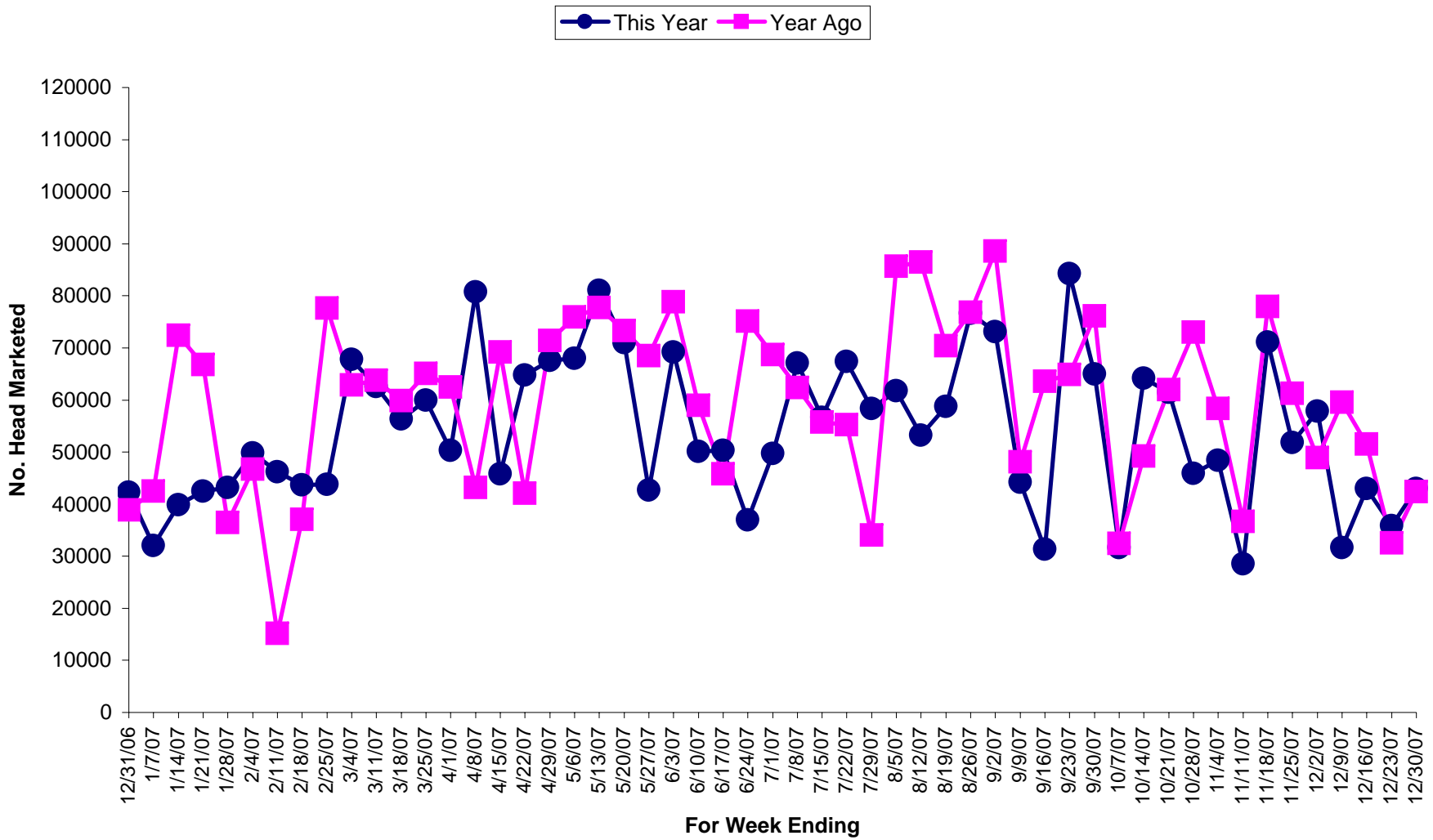
"5 Area Weekly Weighted Average Direct Slaughter Cattle - Premiums and Discounts" at http://www.ams.usda.gov/mnreports/lm_ct169.txt

"National Weekly Direct Slaughter Cattle - Premiums and Discounts" at http://www.ams.usda.gov/mnreports/lm_ct155.txt

"Eastern Cornbelt Direct Feeder Cattle Summary" at http://www.ams.usda.gov/mnreports/qx_LS161.txt.

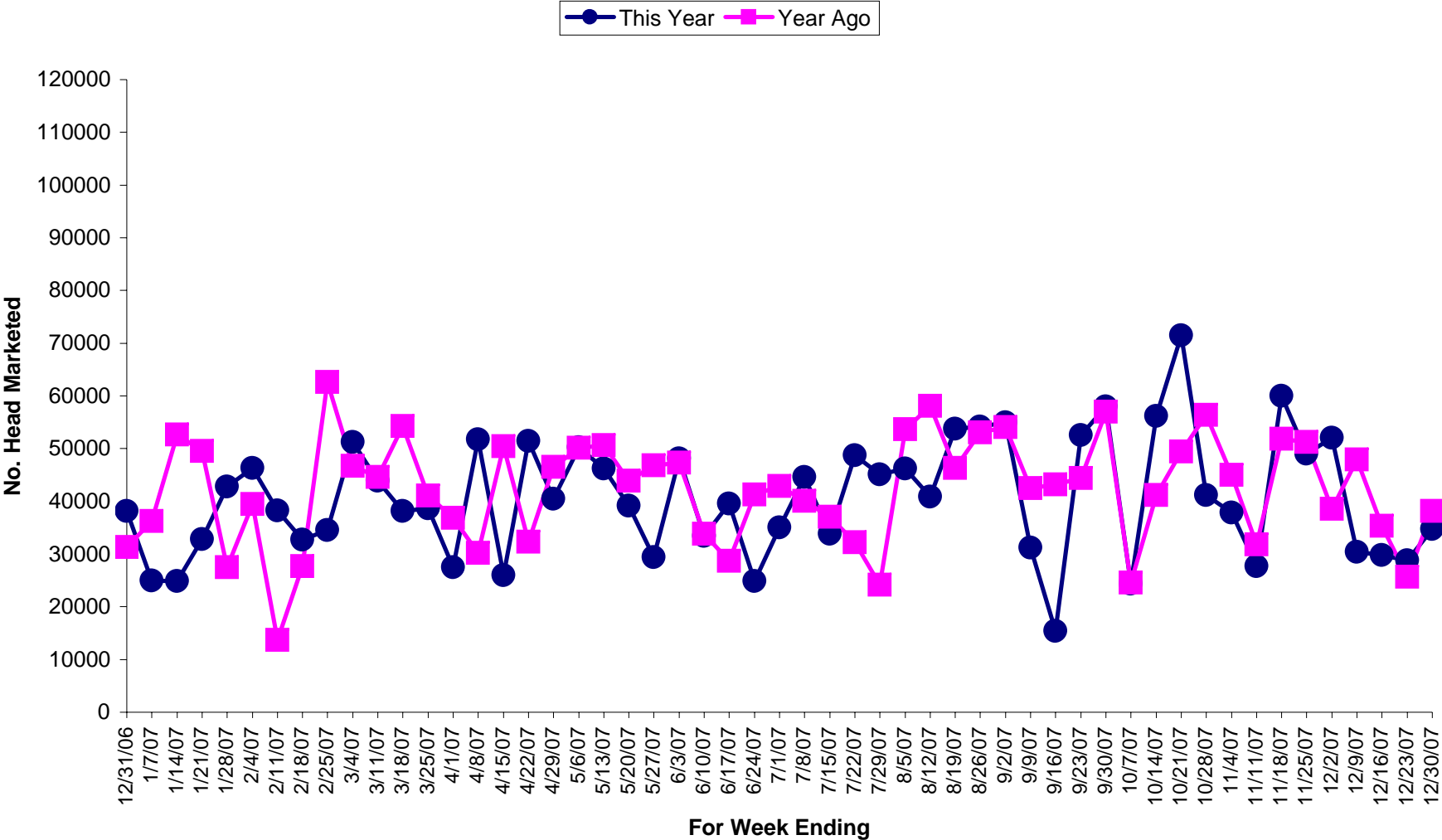
Many more reports can be accessed from the USDA Agricultural Marketing Service's Livestock and Grain Market News web site at <http://www.ams.usda.gov/lsmnpubs/>.

Number Head Marketed Steers, Live FOB



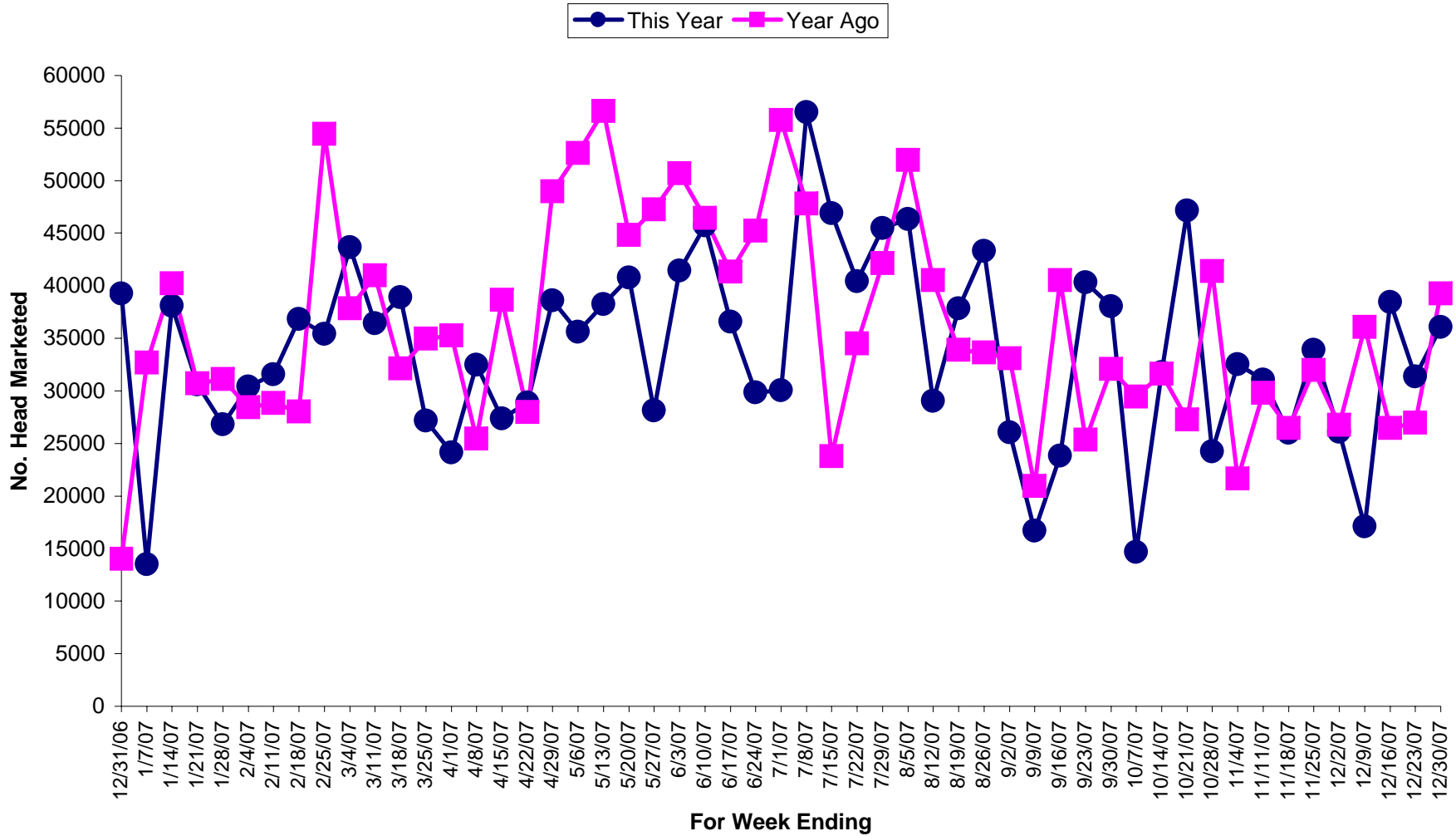
Source: 5 Area Weekly Weighted Average Direct Slaughter Cattle (Texas/Oklahoma, Kansas, Nebraska, Colorado, Iowa/Minnesota feedlots), USDA Market News Service.

Number Head Marketed Heifers, Live FOB



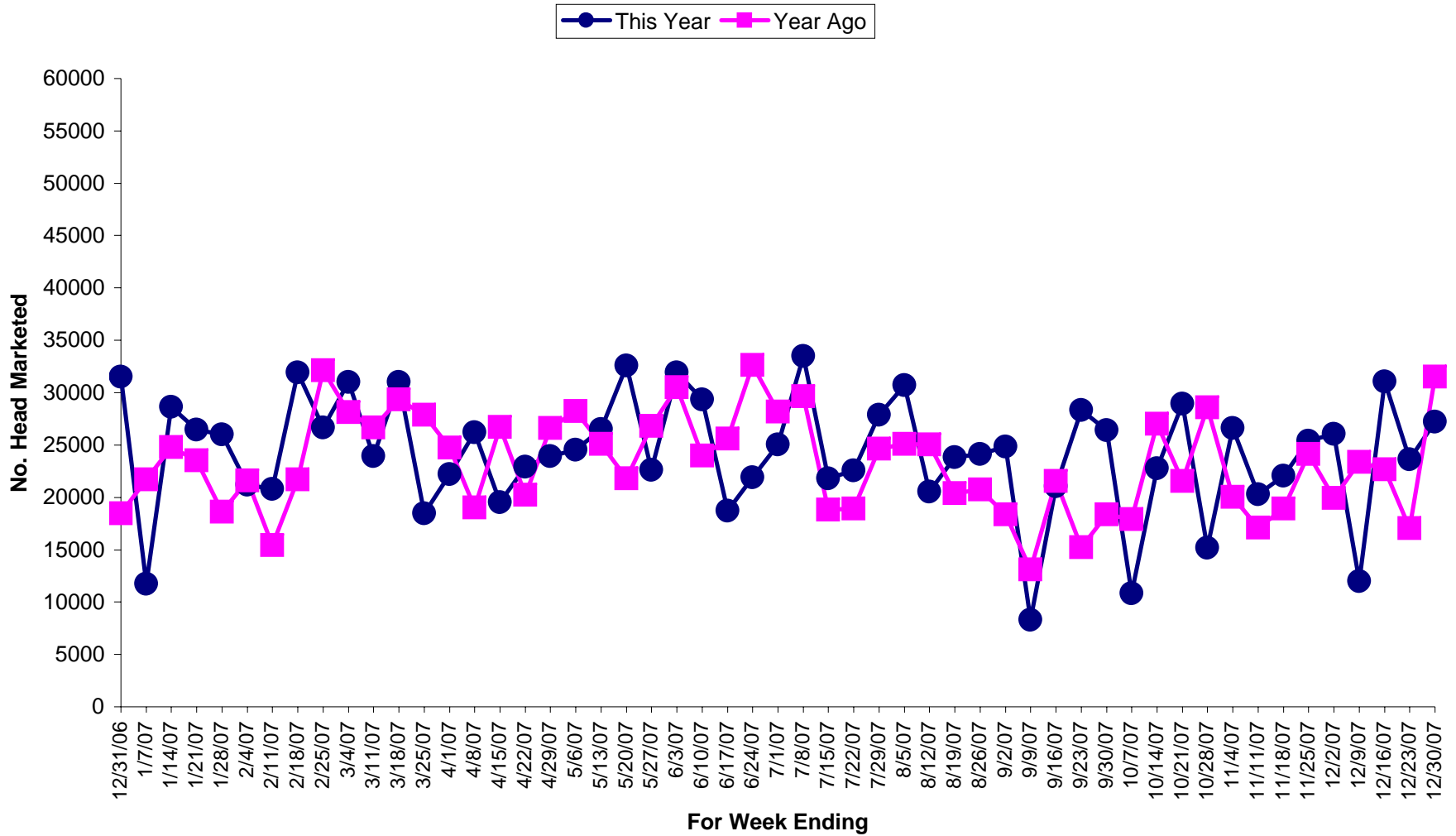
Source: 5 Area Weekly Weighted Average Direct Slaughter Cattle (Texas/Oklahoma, Kansas, Nebraska, Colorado, Iowa/Minnesota feedlots), USDA Market News Service.

Number Head Marketed Steers, Dressed Delivered



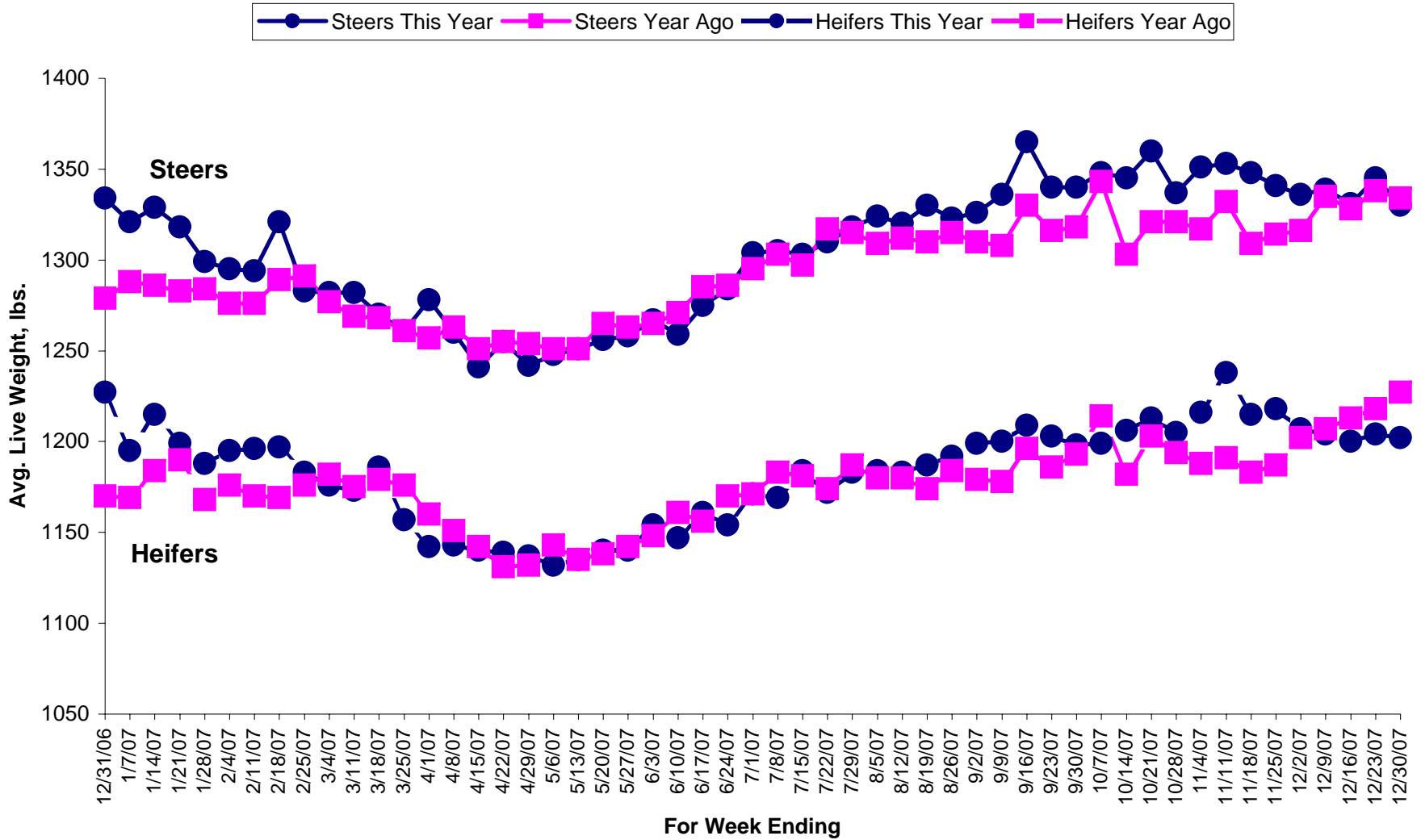
Source: 5 Area Weekly Weighted Average Direct Slaughter Cattle (Texas/Oklahoma, Kansas, Nebraska, Colorado, Iowa/Minnesota feedlots), USDA Market News Service.

Number Head Marketed Heifers, Dressed Delivered



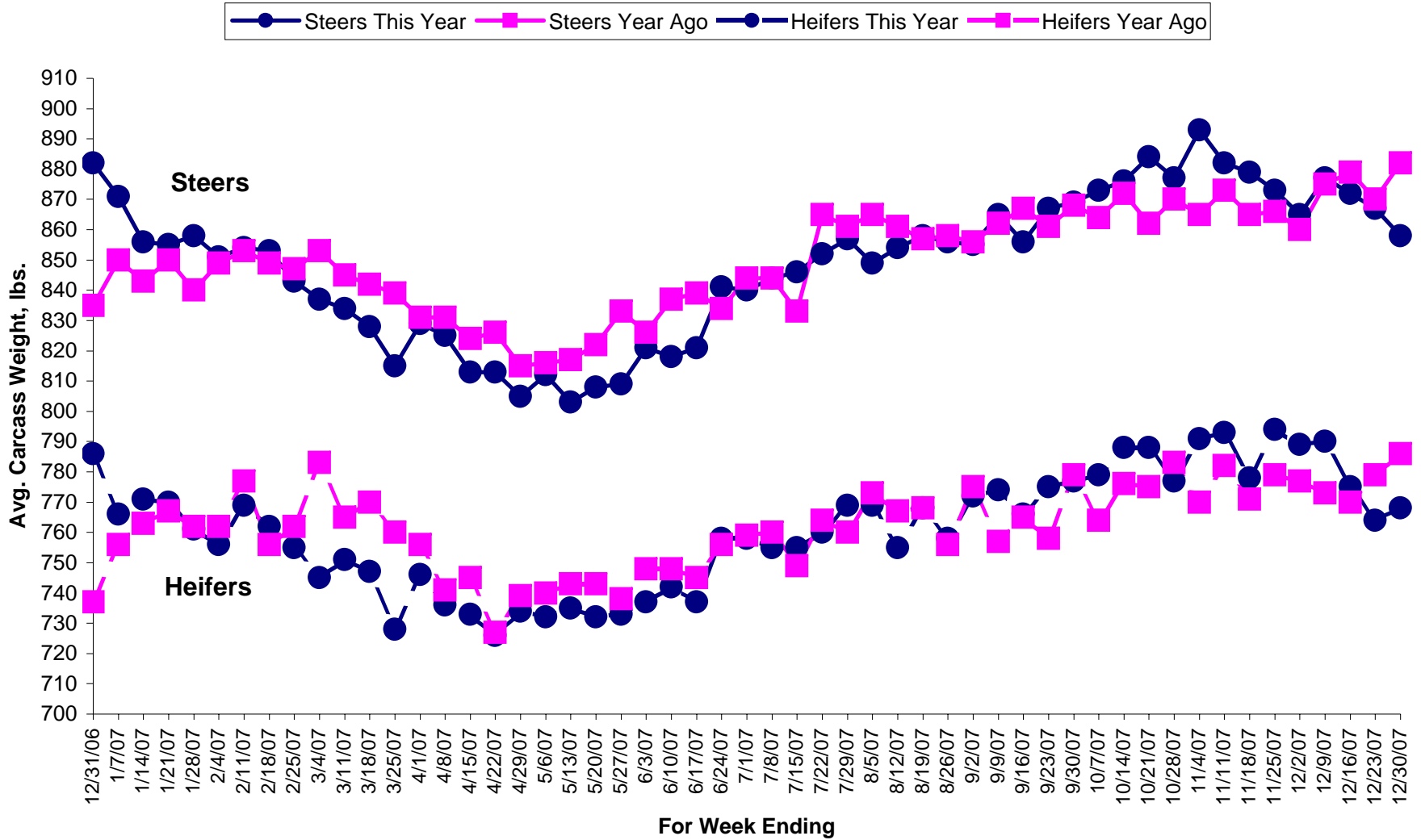
Source: 5 Area Weekly Weighted Average Direct Slaughter Cattle (Texas/Oklahoma, Kansas, Nebraska, Colorado, Iowa/Minnesota feedlots), USDA Market News Service.

Average Live Weight FOB



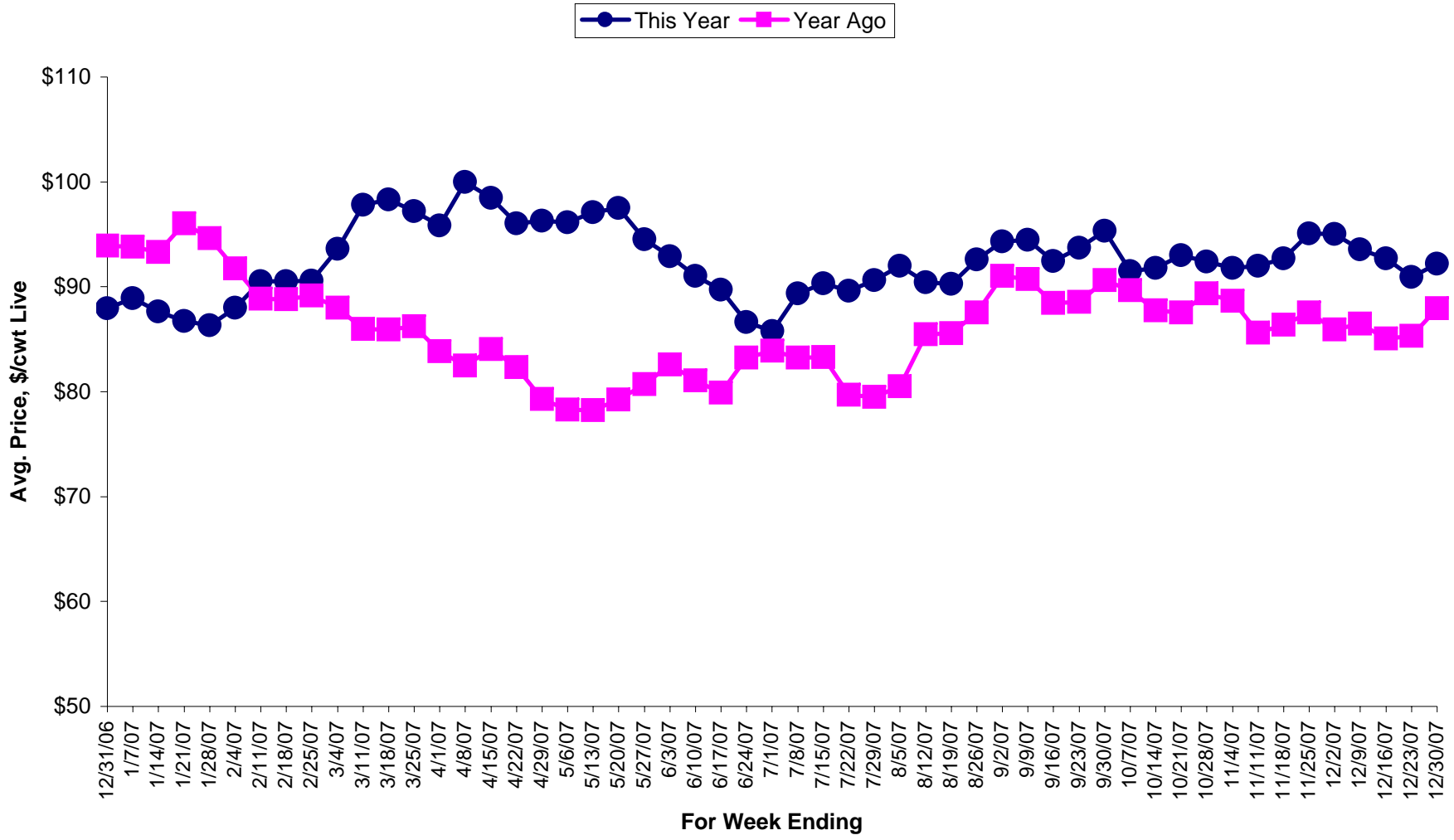
Source: 5 Area Weekly Weighted Average Direct Slaughter Cattle (Texas/Oklahoma, Kansas, Nebraska, Colorado, Iowa/Minnesota feedlots), USDA Market News Service.

Average Carcass Weight Dressed



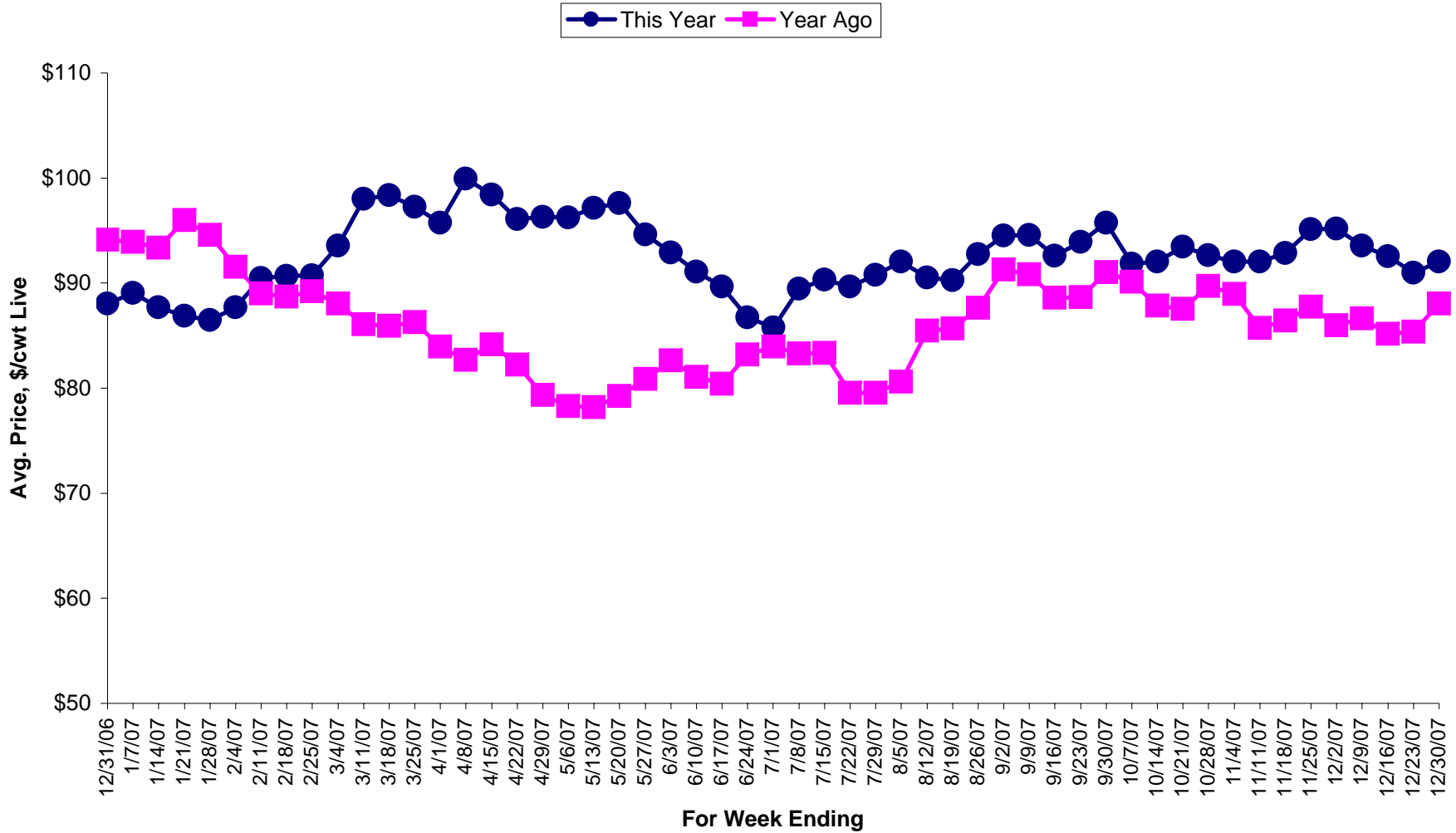
Source: 5 Area Weekly Weighted Average Direct Slaughter Cattle (Texas/Oklahoma, Kansas, Nebraska, Colorado, Iowa/Minnesota feedlots), USDA Market News Service.

Average Price \$/cwt Steers, Live FOB



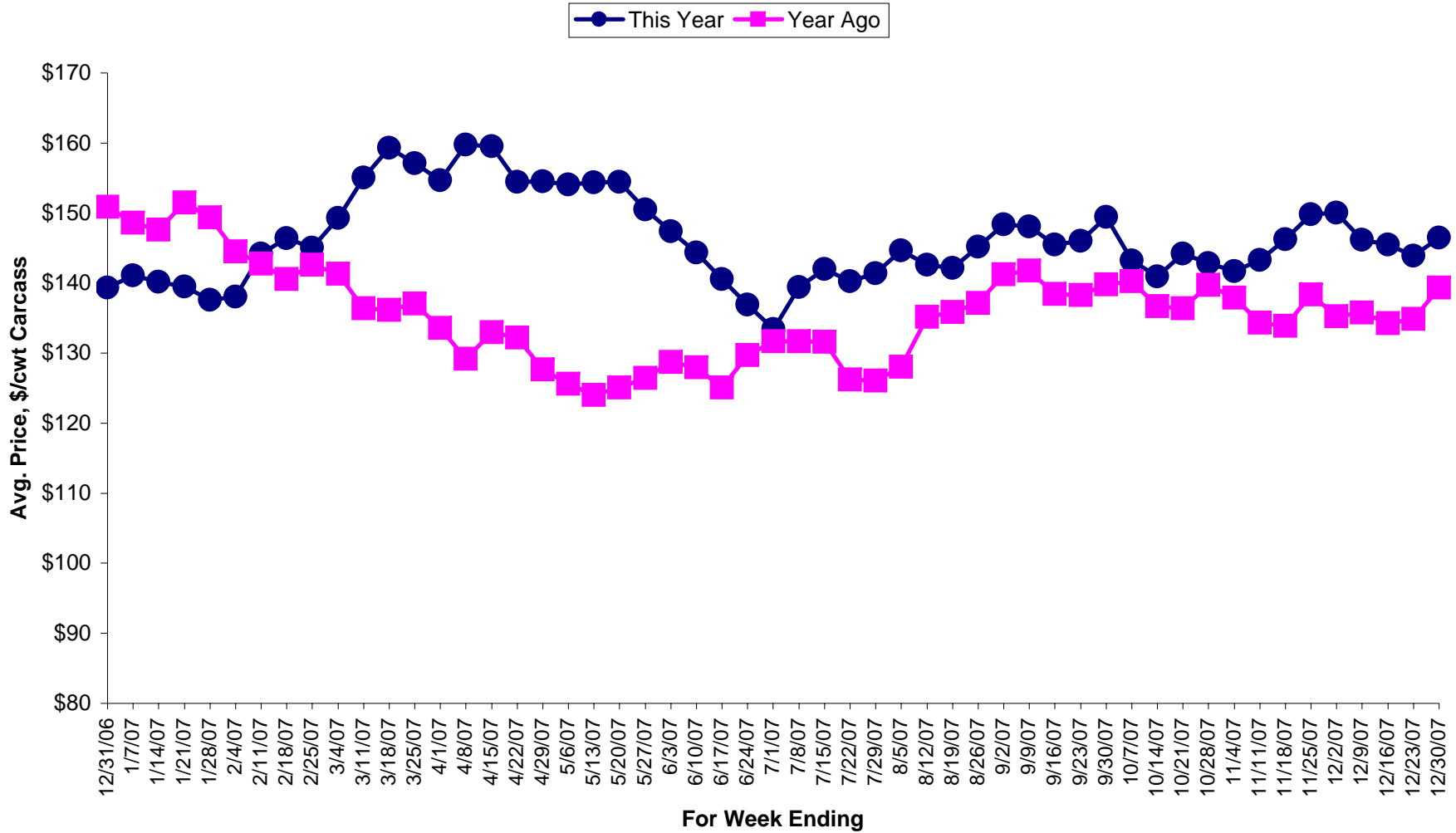
Source: 5 Area Weekly Weighted Average Direct Slaughter Cattle (Texas/Oklahoma, Kansas, Nebraska, Colorado, Iowa/Minnesota feedlots), USDA Market News Service.

Average Price \$/cwt Heifers, Live FOB



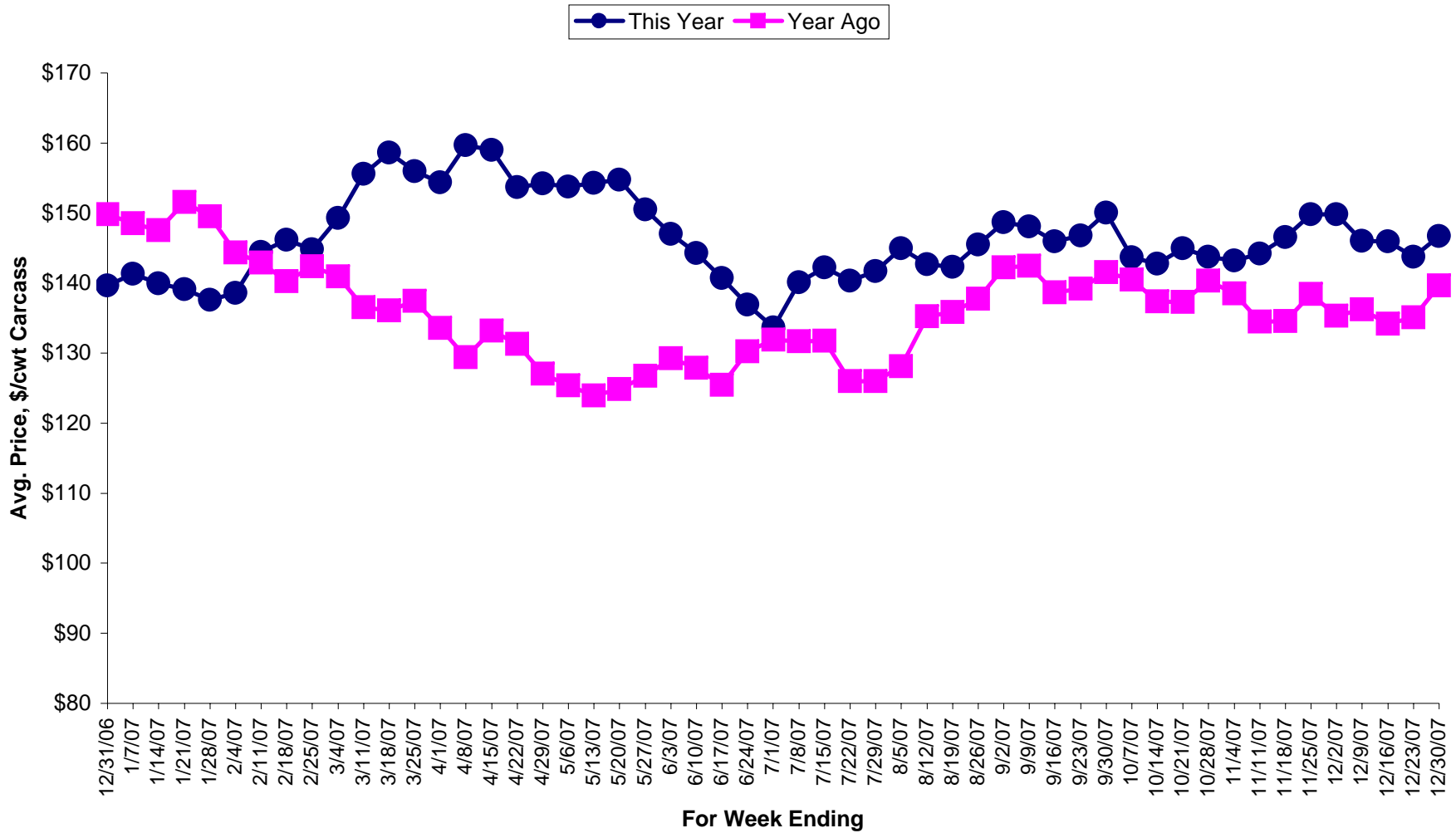
Source: 5 Area Weekly Weighted Average Direct Slaughter Cattle (Texas/Oklahoma, Kansas, Nebraska, Colorado, Iowa/Minnesota feedlots), USDA Market News Service.

Average Price \$/cwt Carcass Weight Basis Steers, Delivered



Source: 5 Area Weekly Weighted Average Direct Slaughter Cattle (Texas/Oklahoma, Kansas, Nebraska, Colorado, Iowa/Minnesota feedlots), USDA Market News Service.

Average Price \$/cwt Carass Weight Basis Heifers, Delivered



Source: 5 Area Weekly Weighted Average Direct Slaughter Cattle (Texas/Oklahoma, Kansas, Nebraska, Colorado, Iowa/Minnesota feedlots), USDA Market News Service.

Week Ending	Number Head of Finished Cattle Marketed Live FOB or Dressed Delivered, by Week							
	Live FOB Steer		Live FOB Heifer		Dressed Del Steer		Dressed Del Heifer	
	No. Head	No. Head	No. Head	No. Head	No. Head	No. Head	No. Head	
	This Year	Year Ago	This Year	Year Ago	This Year	Year Ago	This Year	Year Ago
12/31/2006	42255	38896	38177	31319	39246	14010	31511	18448
1/7/2007	32082	42504	24944	36203	13524	32663	11753	21701
1/14/2007	39905	72398	24833	52640	38118	40211	28631	24795
1/21/2007	42513	66789	32810	49568	30613	30698	26462	23513
1/28/2007	43199	36420	42812	27479	26811	31093	25981	18612
2/4/2007	49803	46680	46344	39446	30427	28432	21205	21617
2/11/2007	46190	15169	38252	13735	31585	28821	20817	15447
2/18/2007	43712	37035	32765	27728	36820	28008	31909	21696
2/25/2007	43784	77638	34544	62597	35408	54424	26659	32131
3/4/2007	67753	62815	51213	46749	43646	37861	31009	28147
3/11/2007	62565	63786	43913	44562	36407	40993	23926	26673
3/18/2007	56372	59870	38122	54226	38912	32126	30995	29323
3/25/2007	59999	65066	38625	41090	27172	34940	18457	27856
4/1/2007	50283	62416	27457	36818	24121	35273	22221	24744
4/8/2007	80782	43176	51776	30179	32497	25468	26223	19045
4/15/2007	45838	69212	25961	50389	27370	38673	19507	26695
4/22/2007	64817	42073	51408	32357	28867	27954	22919	20243
4/29/2007	67618	71415	40421	46535	38608	48993	23917	26621
5/6/2007	67967	75964	50255	50113	35615	52632	24532	28205
5/13/2007	81032	77718	46205	50605	38224	56605	26492	25110
5/20/2007	70976	73335	39134	43898	40751	44819	32579	21803
5/27/2007	42712	68474	29376	46854	28109	47258	22610	26798
6/3/2007	69218	78834	48166	47358	41419	50683	31918	30487
6/10/2007	50154	58898	33382	33786	45713	46447	29343	23976
6/17/2007	50293	45773	39603	28674	36566	41331	18700	25588
6/24/2007	36923	75136	24901	41250	29827	45214	21914	32628
7/1/2007	49680	68675	34996	42881	30041	55741	25055	28184
7/8/2007	67110	62346	44583	40075	56494	47783	33502	29671
7/15/2007	56604	55731	33808	37061	46882	23763	21790	18828
7/22/2007	67397	55183	48701	32201	40443	34497	22556	18933
7/29/2007	58391	34036	45088	24114	45474	42138	27887	24651
8/5/2007	61730	85684	46186	53666	46345	51943	30709	25091
8/12/2007	53228	86476	40843	58125	29056	40530	20554	25060
8/19/2007	58784	70363	53734	46329	37847	33873	23818	20368
8/26/2007	76601	76827	54123	53062	43294	33652	24142	20746
9/2/2007	73154	88526	54970	54012	26037	33068	24820	18382
9/9/2007	44192	48073	31176	42448	16707	20950	8304	13106
9/16/2007	31306	63608	15427	43177	23835	40499	21064	21547
9/23/2007	84236	64823	52545	44441	40323	25325	28325	15211
9/30/2007	64987	76113	57983	56995	38043	32077	26418	18386
10/7/2007	31660	32402	24356	24593	14650	29435	10830	17920
10/14/2007	64184	49236	56166	41215	31758	31637	22784	27030
10/21/2007	61489	61912	71427	49448	47131	27271	28925	21534
10/28/2007	45862	72973	41178	56406	24212	41371	15178	28602
11/4/2007	48378	58388	37816	45004	32544	21644	26631	20043
11/11/2007	28491	36614	27650	31809	31040	29780	20299	17122
11/18/2007	71097	77970	60036	51860	26010	26444	22061	18941
11/25/2007	51840	61281	49073	51198	33873	31968	25416	24137
12/2/2007	57860	48891	52069	38571	26092	26756	26072	19912

Source: 5 Area Weekly Weighted Average Direct Slaughter Cattle (Texas/Oklahoma, Kansas, Nebraska, Colorado, Iowa/Minnesota feedlots), USDA Market News Service.

Number Head of Finished Cattle Marketed Live FOB or Dressed Delivered, by Week								
Week Ending	Live FOB Steer		Live FOB Heifer		Dressed Del Steer		Dressed Del Heifer	
	<u>No. Head</u>		<u>No. Head</u>		<u>No. Head</u>		<u>No. Head</u>	
	This Year	Year Ago	This Year	Year Ago	This Year	Year Ago	This Year	Year Ago
12/9/2007	31669	59512	30428	47886	17102	36092	11981	23380
12/16/2007	42950	51501	29837	35299	38468	26436	31044	22689
12/23/2007	35875	32570	28767	25690	31343	26977	23635	17026
12/30/2007	43010	42335	34764	38177	36079	39246	27201	31511

Source: 5 Area Weekly Weighted Average Direct Slaughter Cattle (Texas/Oklahoma, Kansas, Nebraska, Colorado, Iowa/Minnesota feedlots), USDA Market News Service.

Average Weights for Finished Cattle Sold Live FOB or Dressed Delivered, by Week

Week Ending	Live FOB Steer		Live FOB Heifer		Dressed Del Steer		Dressed Del Heifer	
	<u>Avg Weight</u>		<u>Avg Weight</u>		<u>Avg Weight</u>		<u>Avg Weight</u>	
	This Year	Year Ago	This Year	Year Ago	This Year	Year Ago	This Year	Year Ago
12/31/2006	1334	1279	1227	1170	882	835	786	737
1/7/2007	1321	1288	1195	1169	871	850	766	756
1/14/2007	1329	1286	1215	1184	856	843	771	763
1/21/2007	1318	1283	1199	1190	855	850	770	767
1/28/2007	1299	1284	1188	1168	858	840	761	762
2/4/2007	1295	1276	1195	1176	851	849	756	762
2/11/2007	1294	1276	1196	1170	854	853	769	777
2/18/2007	1321	1289	1197	1169	853	849	762	756
2/25/2007	1283	1291	1183	1176	843	847	755	762
3/4/2007	1282	1277	1176	1182	837	853	745	783
3/11/2007	1282	1269	1173	1175	834	845	751	765
3/18/2007	1270	1268	1186	1179	828	842	747	770
3/25/2007	1261	1261	1157	1176	815	839	728	760
4/1/2007	1278	1257	1142	1160	829	831	746	756
4/8/2007	1260	1263	1143	1151	825	831	736	741
4/15/2007	1241	1251	1140	1142	813	824	733	745
4/22/2007	1255	1255	1139	1131	813	826	726	727
4/29/2007	1242	1254	1137	1132	805	815	734	739
5/6/2007	1248	1251	1132	1143	812	816	732	740
5/13/2007	1251	1251	1135	1135	803	817	735	743
5/20/2007	1256	1265	1140	1138	808	822	732	743
5/27/2007	1258	1263	1140	1142	809	833	733	738
6/3/2007	1267	1265	1154	1148	821	826	737	748
6/10/2007	1259	1271	1147	1161	818	837	742	748
6/17/2007	1275	1285	1161	1156	821	839	737	745
6/24/2007	1284	1286	1154	1170	841	834	758	756
7/1/2007	1304	1295	1171	1171	840	844	758	759
7/8/2007	1305	1303	1169	1183	844	844	755	760
7/15/2007	1303	1297	1184	1181	846	833	755	749
7/22/2007	1310	1317	1172	1174	852	865	760	764
7/29/2007	1318	1315	1183	1187	857	861	769	760
8/5/2007	1324	1309	1184	1180	849	865	769	773
8/12/2007	1320	1312	1183	1180	854	861	755	767
8/19/2007	1330	1310	1187	1174	858	857	768	768
8/26/2007	1323	1315	1192	1184	856	858	758	756
9/2/2007	1326	1310	1199	1179	855	856	772	775
9/9/2007	1336	1308	1200	1178	865	862	774	757
9/16/2007	1365	1330	1209	1196	856	867	766	765
9/23/2007	1340	1316	1203	1186	867	861	775	758
9/30/2007	1340	1318	1198	1193	869	868	777	779
10/7/2007	1348	1343	1199	1214	873	864	779	764
10/14/2007	1345	1303	1206	1182	876	872	788	776
10/21/2007	1360	1321	1213	1203	884	862	788	775
10/28/2007	1337	1321	1205	1194	877	870	777	783
11/4/2007	1351	1317	1216	1188	893	865	791	770
11/11/2007	1353	1332	1238	1191	882	873	793	782
11/18/2007	1348	1309	1215	1183	879	865	778	771
11/25/2007	1341	1314	1218	1187	873	866	794	779
12/2/2007	1336	1316	1207	1202	865	860	789	777

Source: 5 Area Weekly Weighted Average Direct Slaughter Cattle (Texas/Oklahoma, Kansas, Nebraska, Colorado, Iowa/Minnesota feedlots), USDA Market News Service.

Average Weights for Finished Cattle Sold Live FOB or Dressed Delivered, by Week

Week Ending	Live FOB Steer		Live FOB Heifer		Dressed Del Steer		Dressed Del Heifer	
	<u>Avg Weight</u>		<u>Avg Weight</u>		<u>Avg Weight</u>		<u>Avg Weight</u>	
	This Year	Year Ago	This Year	Year Ago	This Year	Year Ago	This Year	Year Ago
12/9/2007	1339	1335	1204	1207	877	875	790	773
12/16/2007	1331	1328	1200	1213	872	879	775	770
12/23/2007	1345	1338	1204	1218	867	870	764	779
12/30/2007	1330	1334	1202	1227	858	882	768	786

Source: 5 Area Weekly Weighted Average Direct Slaughter Cattle (Texas/Oklahoma, Kansas, Nebraska, Colorado, Iowa/Minnesota feedlots), USDA Market News Service.

Average Prices Paid for Finished Cattle Sold Live FOB or Dressed Delivered, by Week

Week Ending	Live FOB Steer		Live FOB Heifer		Dressed Del Steer		Dressed Del Heifer	
	Avg Price		Avg Price		Avg Price		Avg Price	
	This Year	Year Ago	This Year	Year Ago	This Year	Year Ago	This Year	Year Ago
12/31/2006	\$87.94	\$93.90	\$88.03	\$94.09	\$139.31	\$150.85	\$139.64	\$149.79
1/7/2007	\$88.88	\$93.79	\$89.07	\$93.93	\$141.11	\$148.57	\$141.33	\$148.54
1/14/2007	\$87.66	\$93.28	\$87.68	\$93.37	\$140.18	\$147.58	\$139.95	\$147.53
1/21/2007	\$86.73	\$96.02	\$86.87	\$95.98	\$139.51	\$151.48	\$139.15	\$151.53
1/28/2007	\$86.33	\$94.63	\$86.46	\$94.55	\$137.58	\$149.39	\$137.60	\$149.48
2/4/2007	\$88.00	\$91.73	\$87.67	\$91.52	\$138.04	\$144.54	\$138.61	\$144.38
2/11/2007	\$90.52	\$88.83	\$90.47	\$89.00	\$144.23	\$142.75	\$144.39	\$142.91
2/18/2007	\$90.52	\$88.80	\$90.68	\$88.72	\$146.37	\$140.52	\$146.16	\$140.29
2/25/2007	\$90.58	\$89.15	\$90.71	\$89.23	\$145.03	\$142.57	\$144.84	\$142.40
3/4/2007	\$93.63	\$87.99	\$93.54	\$88.04	\$149.28	\$141.33	\$149.30	\$140.97
3/11/2007	\$97.79	\$85.99	\$98.03	\$86.05	\$155.07	\$136.37	\$155.60	\$136.50
3/18/2007	\$98.32	\$85.94	\$98.35	\$85.94	\$159.33	\$136.15	\$158.63	\$136.10
3/25/2007	\$97.19	\$86.24	\$97.27	\$86.25	\$157.07	\$137.04	\$155.93	\$137.41
4/1/2007	\$95.86	\$83.87	\$95.71	\$83.96	\$154.67	\$133.58	\$154.35	\$133.55
4/8/2007	\$99.97	\$82.48	\$99.95	\$82.66	\$159.75	\$129.17	\$159.68	\$129.39
4/15/2007	\$98.45	\$84.07	\$98.42	\$84.13	\$159.51	\$132.98	\$158.99	\$133.21
4/22/2007	\$96.06	\$82.34	\$96.07	\$82.24	\$154.46	\$132.18	\$153.70	\$131.27
4/29/2007	\$96.29	\$79.27	\$96.27	\$79.35	\$154.49	\$127.65	\$154.24	\$127.03
5/6/2007	\$96.15	\$78.29	\$96.22	\$78.27	\$154.09	\$125.58	\$153.74	\$125.39
5/13/2007	\$97.08	\$78.24	\$97.14	\$78.20	\$154.33	\$123.99	\$154.29	\$123.94
5/20/2007	\$97.50	\$79.22	\$97.63	\$79.26	\$154.44	\$125.05	\$154.74	\$124.84
5/27/2007	\$94.54	\$80.73	\$94.63	\$80.87	\$150.53	\$126.46	\$150.47	\$126.74
6/3/2007	\$92.89	\$82.56	\$92.88	\$82.62	\$147.35	\$128.69	\$146.97	\$129.23
6/10/2007	\$91.04	\$81.07	\$91.09	\$81.08	\$144.34	\$127.97	\$144.26	\$127.92
6/17/2007	\$89.69	\$79.89	\$89.68	\$80.43	\$140.55	\$125.08	\$140.73	\$125.45
6/24/2007	\$86.62	\$83.22	\$86.74	\$83.17	\$136.88	\$129.67	\$136.92	\$130.21
7/1/2007	\$85.78	\$83.90	\$85.76	\$83.94	\$133.40	\$131.65	\$133.63	\$131.87
7/8/2007	\$89.37	\$83.25	\$89.46	\$83.28	\$139.39	\$131.66	\$140.11	\$131.66
7/15/2007	\$90.31	\$83.28	\$90.33	\$83.32	\$141.97	\$131.59	\$142.24	\$131.77
7/22/2007	\$89.61	\$79.68	\$89.65	\$79.53	\$140.23	\$126.23	\$140.35	\$126.00
7/29/2007	\$90.63	\$79.47	\$90.80	\$79.55	\$141.39	\$126.04	\$141.66	\$125.98
8/5/2007	\$91.97	\$80.52	\$92.04	\$80.60	\$144.69	\$128.04	\$144.99	\$128.09
8/12/2007	\$90.41	\$85.48	\$90.51	\$85.47	\$142.64	\$135.17	\$142.69	\$135.24
8/19/2007	\$90.25	\$85.59	\$90.25	\$85.66	\$142.15	\$135.88	\$142.28	\$135.84
8/26/2007	\$92.61	\$87.54	\$92.76	\$87.64	\$145.19	\$137.17	\$145.46	\$137.75
9/2/2007	\$94.33	\$91.03	\$94.50	\$91.28	\$148.41	\$141.25	\$148.66	\$142.26
9/9/2007	\$94.48	\$90.74	\$94.59	\$90.81	\$148.09	\$141.80	\$148.05	\$142.42
9/16/2007	\$92.43	\$88.43	\$92.61	\$88.61	\$145.52	\$138.42	\$145.97	\$138.67
9/23/2007	\$93.71	\$88.54	\$93.89	\$88.65	\$146.01	\$138.28	\$146.77	\$139.20
9/30/2007	\$95.34	\$90.63	\$95.72	\$91.02	\$149.40	\$139.81	\$150.03	\$141.58
10/7/2007	\$91.47	\$89.68	\$91.83	\$90.10	\$143.23	\$140.26	\$143.68	\$140.46
10/14/2007	\$91.80	\$87.76	\$92.02	\$87.84	\$140.92	\$136.70	\$142.76	\$137.40
10/21/2007	\$93.02	\$87.55	\$93.46	\$87.55	\$144.17	\$136.41	\$144.98	\$137.32
10/28/2007	\$92.41	\$89.38	\$92.63	\$89.70	\$142.86	\$139.69	\$143.75	\$140.36
11/4/2007	\$91.77	\$88.67	\$92.06	\$88.95	\$141.71	\$137.90	\$143.21	\$138.48
11/11/2007	\$92.00	\$85.62	\$92.02	\$85.70	\$143.31	\$134.37	\$144.17	\$134.47
11/18/2007	\$92.68	\$86.35	\$92.83	\$86.41	\$146.24	\$133.85	\$146.55	\$134.55
11/25/2007	\$95.09	\$87.55	\$95.12	\$87.73	\$149.85	\$138.37	\$149.85	\$138.42
12/2/2007	\$95.03	\$85.92	\$95.20	\$85.95	\$150.04	\$135.22	\$149.84	\$135.34

Source: 5 Area Weekly Weighted Average Direct Slaughter Cattle (Texas/Oklahoma, Kansas, Nebraska, Colorado, Iowa/Minnesota feedlots), USDA Market News Service.

Average Prices Paid for Finished Cattle Sold Live FOB or Dressed Delivered, by Week

Week Ending	Live FOB Steer		Live FOB Heifer		Dressed Del Steer		Dressed Del Heifer	
	<u>Avg Price</u>		<u>Avg Price</u>		<u>Avg Price</u>		<u>Avg Price</u>	
	This Year	Year Ago	This Year	Year Ago	This Year	Year Ago	This Year	Year Ago
12/9/2007	\$93.54	\$86.47	\$93.57	\$86.65	\$146.16	\$135.78	\$146.02	\$136.22
12/16/2007	\$92.68	\$85.06	\$92.56	\$85.16	\$145.48	\$134.25	\$145.92	\$134.16
12/23/2007	\$90.94	\$85.31	\$90.97	\$85.36	\$143.87	\$134.86	\$143.78	\$135.10
12/30/2007	\$92.21	\$87.94	\$92.06	\$88.03	\$146.47	\$139.31	\$146.73	\$139.64

Source: 5 Area Weekly Weighted Average Direct Slaughter Cattle (Texas/Oklahoma, Kansas, Nebraska, Colorado, Iowa/Minnesota feedlots), USDA Market News Service.