

2008 MARKETING YEAR

Having knowledge of accurate and current marketing information can assist beef cattle producers in making management decisions in their operations. The USDA Market News Service, St. Joseph, MO, provides numerous reports for various markets throughout the US. One report, "5 Area Weekly Weighted Average Direct Slaughter Cattle," reports marketings, weights, and prices of feedlot cattle from Texas/Oklahoma, Kansas, Nebraska, Colorado, and Iowa/Minnesota. The report covers steers and heifers that were marketed on a live or dressed basis. The report is updated weekly and covers the previous week's marketings. A summary is provided showing the most recent week, last week, and year ago data.

The information used for this web page utilizes the summary data. Charts are provided for number head marketed, live and dressed weights, and prices. Charts begin for the week ending December 30, 2007 (final week for 2007) and are updated on a weekly basis. The numerical data used in the charts is also available in table form.

The weekly USDA report contains detailed information relating to percentage of choice grade cattle, numbers, weights, and prices. For the detailed report, go to http://www.ams.usda.gov/mnreports/lm_ct150.txt.

Other reports which are available include:

"5 Area Weekly Weighted Average Direct Slaughter Cattle - Premiums and Discounts" at http://www.ams.usda.gov/mnreports/lm_ct169.txt

"National Weekly Direct Slaughter Cattle - Premiums and Discounts" at http://www.ams.usda.gov/mnreports/lm_ct155.txt

"Eastern Cornbelt Direct Feeder Cattle Summary" at http://www.ams.usda.gov/mnreports/gx_LS161.txt.

Many more reports can be accessed from the USDA Agricultural Marketing Service's Livestock and Grain Market News web site at <http://www.ams.usda.gov/lsmnpubs/>.

Charts for previous marketing years are available at:

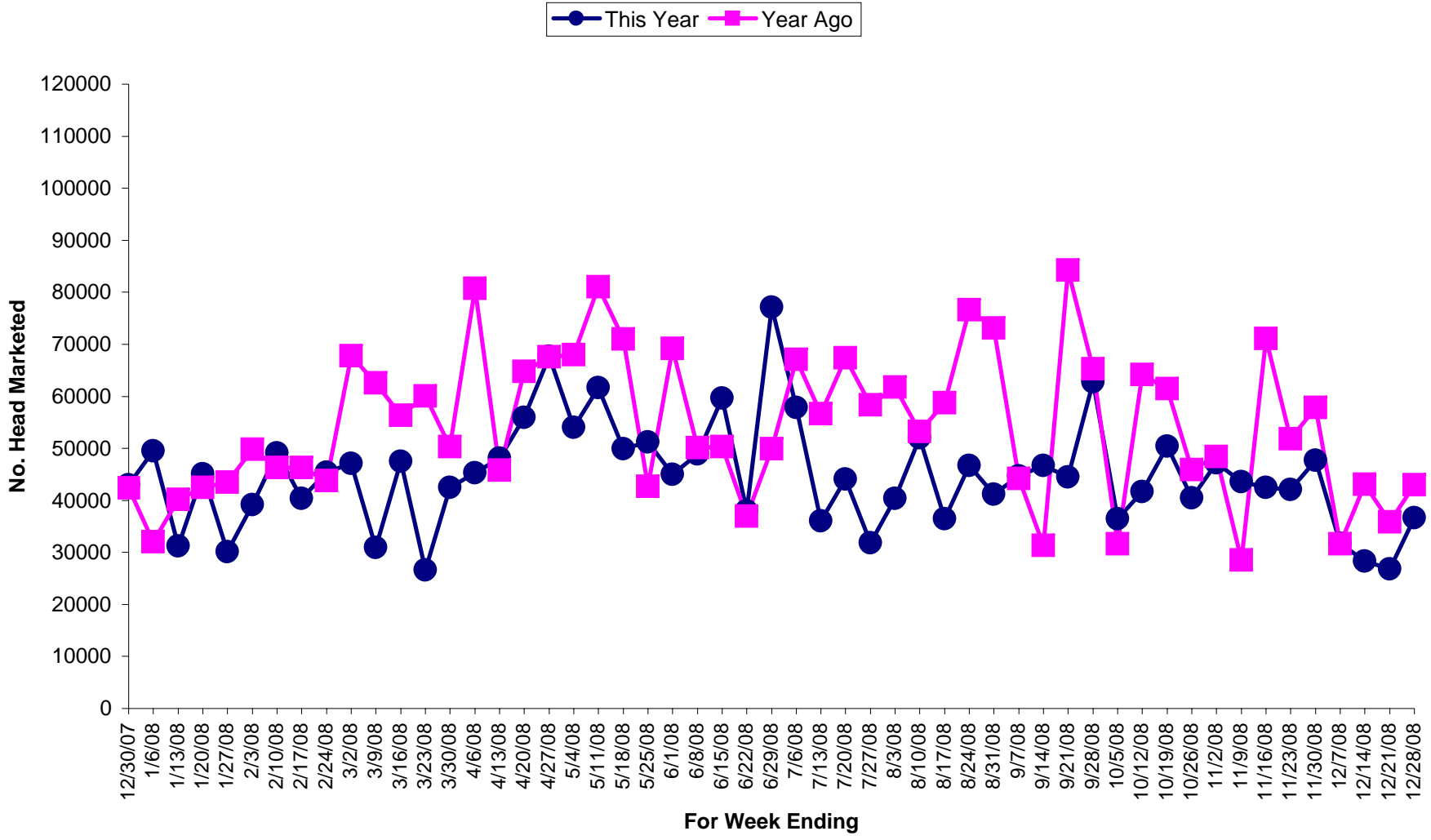
2007 <http://www.ansc.purdue.edu/beef/Market2007.pdf>

2006 <http://www.ansc.purdue.edu/beef/Market2006.pdf>

2005 <http://www.ansc.purdue.edu/beef/Market2005.pdf>

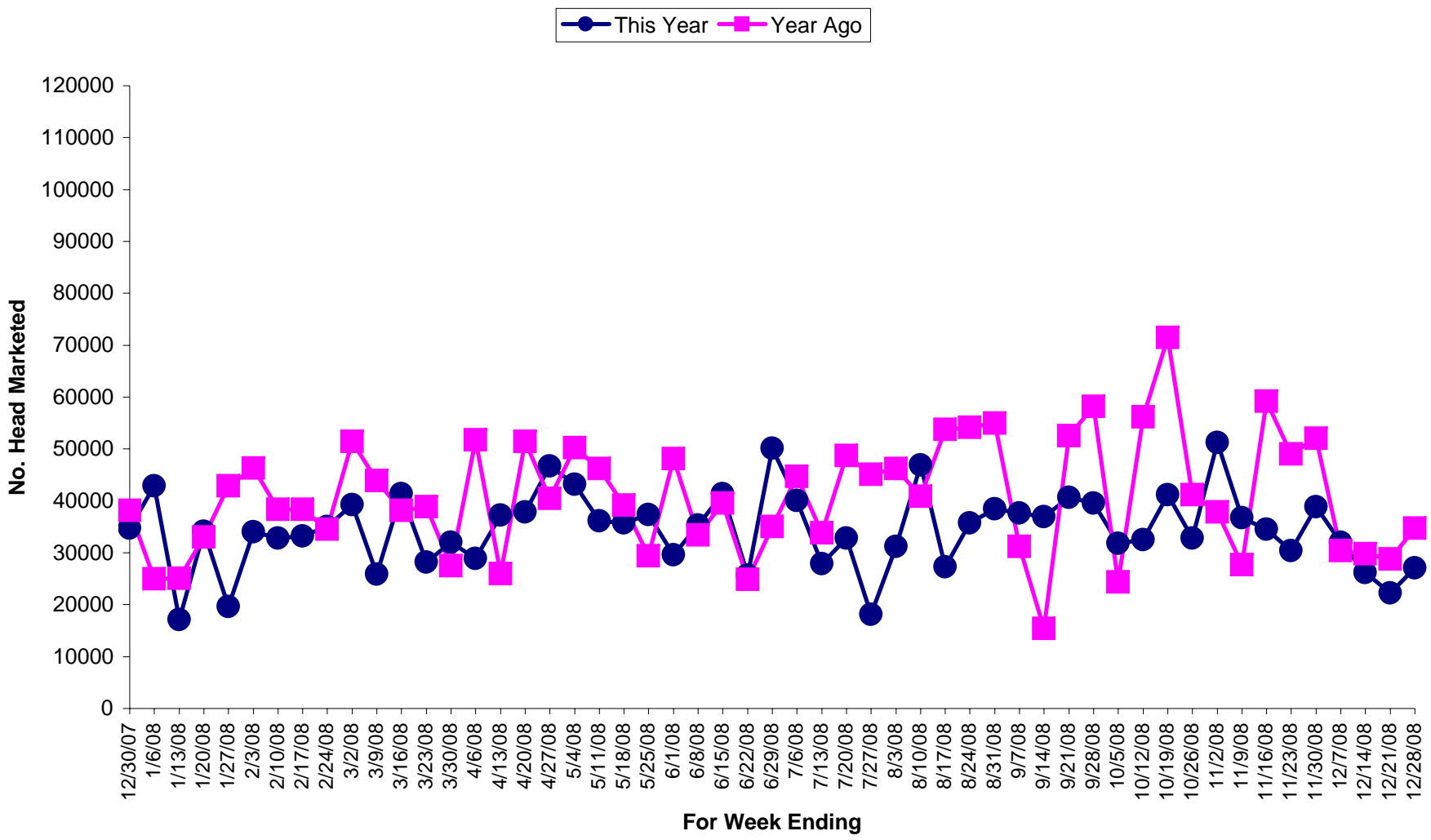
2004 <http://www.ansc.purdue.edu/beef/Market2004.pdf>

Number Head Marketed Steers, Live FOB



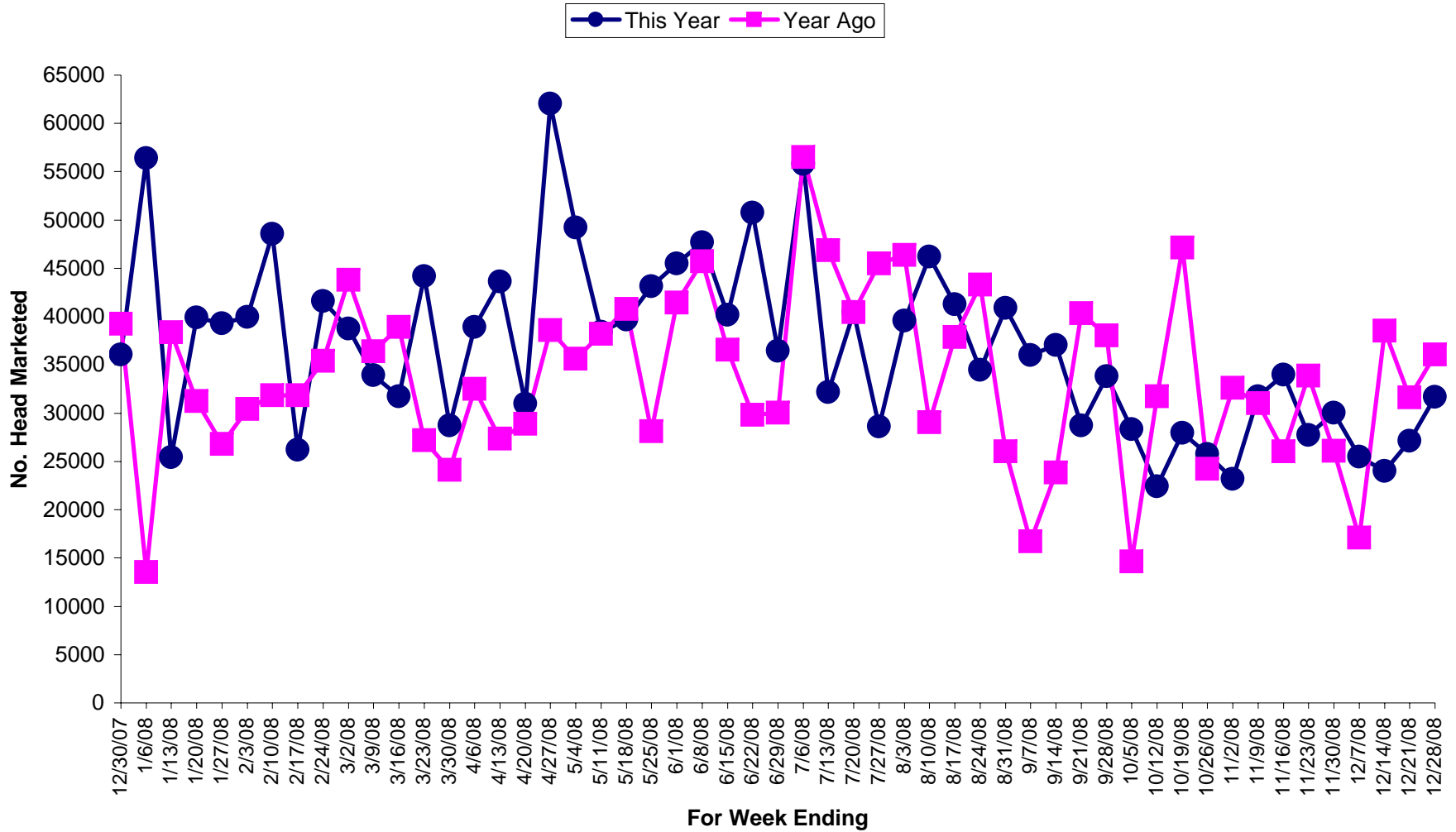
Source: 5 Area Weekly Weighted Average Direct Slaughter Cattle (Texas/Oklahoma, Kansas, Nebraska, Colorado, Iowa/Minnesota feedlots), USDA Market News Service.

Number Head Marketed Heifers, Live FOB



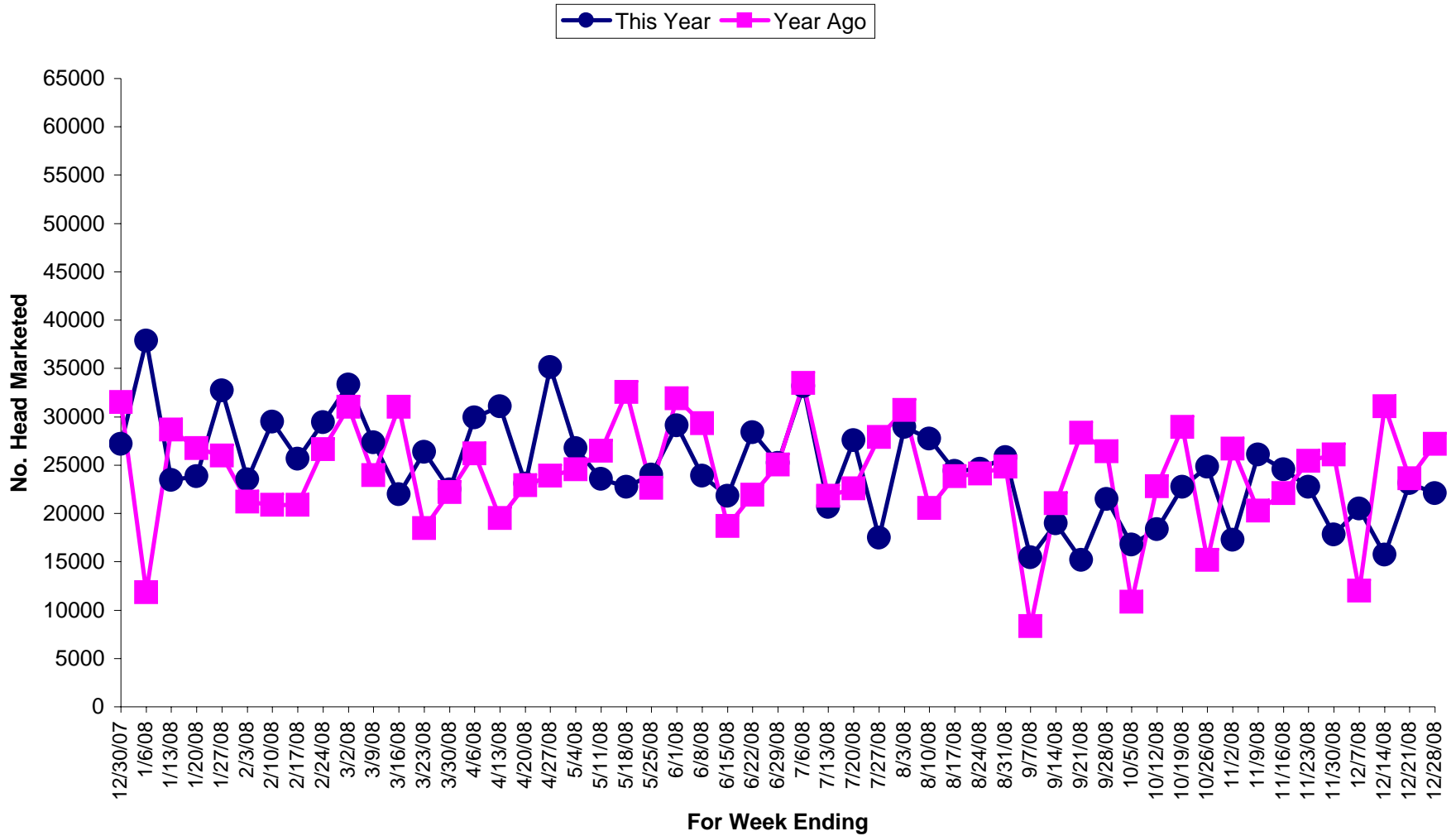
Source: 5 Area Weekly Weighted Average Direct Slaughter Cattle (Texas/Oklahoma, Kansas, Nebraska, Colorado, Iowa/Minnesota feedlots), USDA Market News Service.

Number Head Marketed Steers, Dressed Delivered



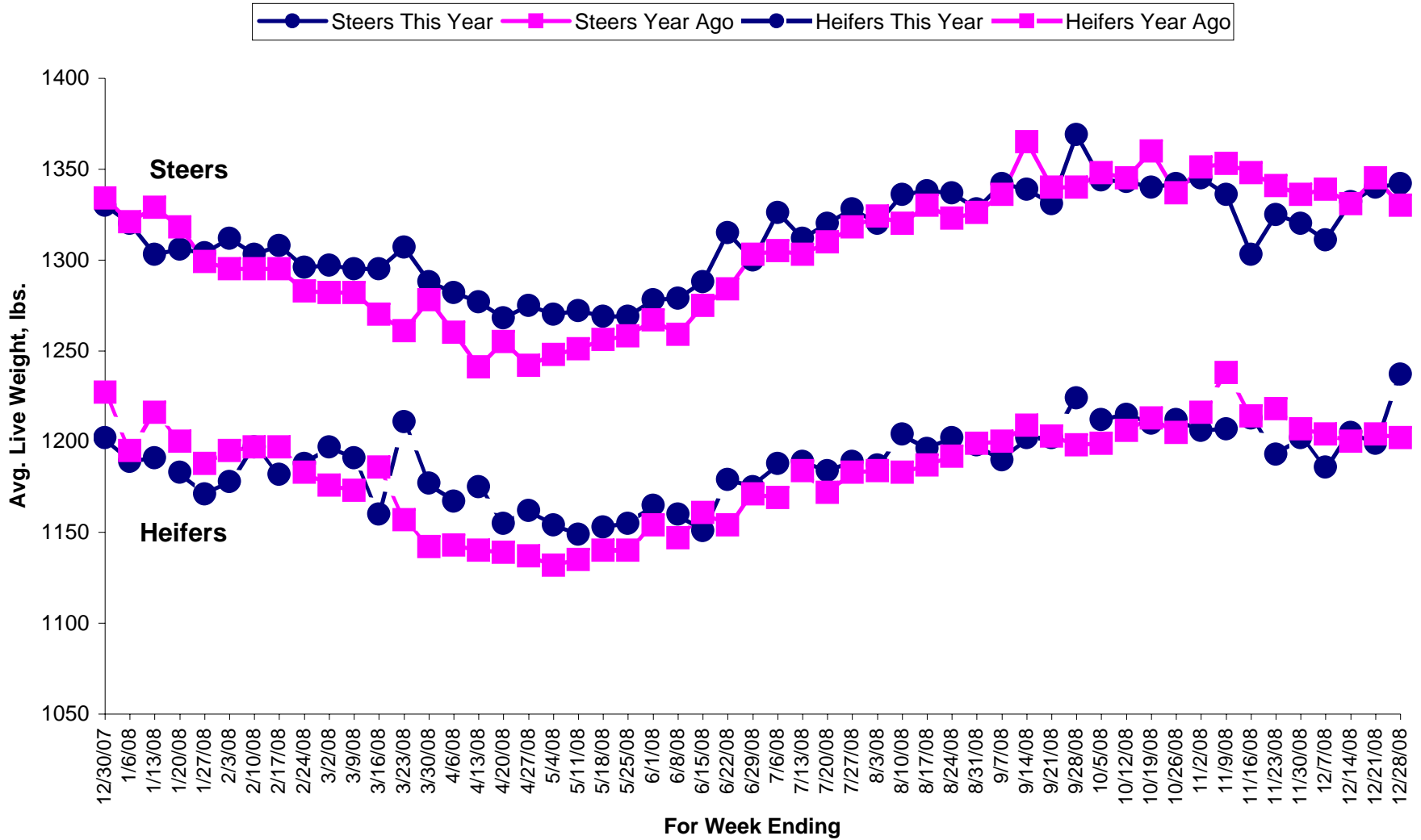
Source: 5 Area Weekly Weighted Average Direct Slaughter Cattle (Texas/Oklahoma, Kansas, Nebraska, Colorado, Iowa/Minnesota feedlots), USDA Market News Service.

Number Head Marketed Heifers, Dressed Delivered



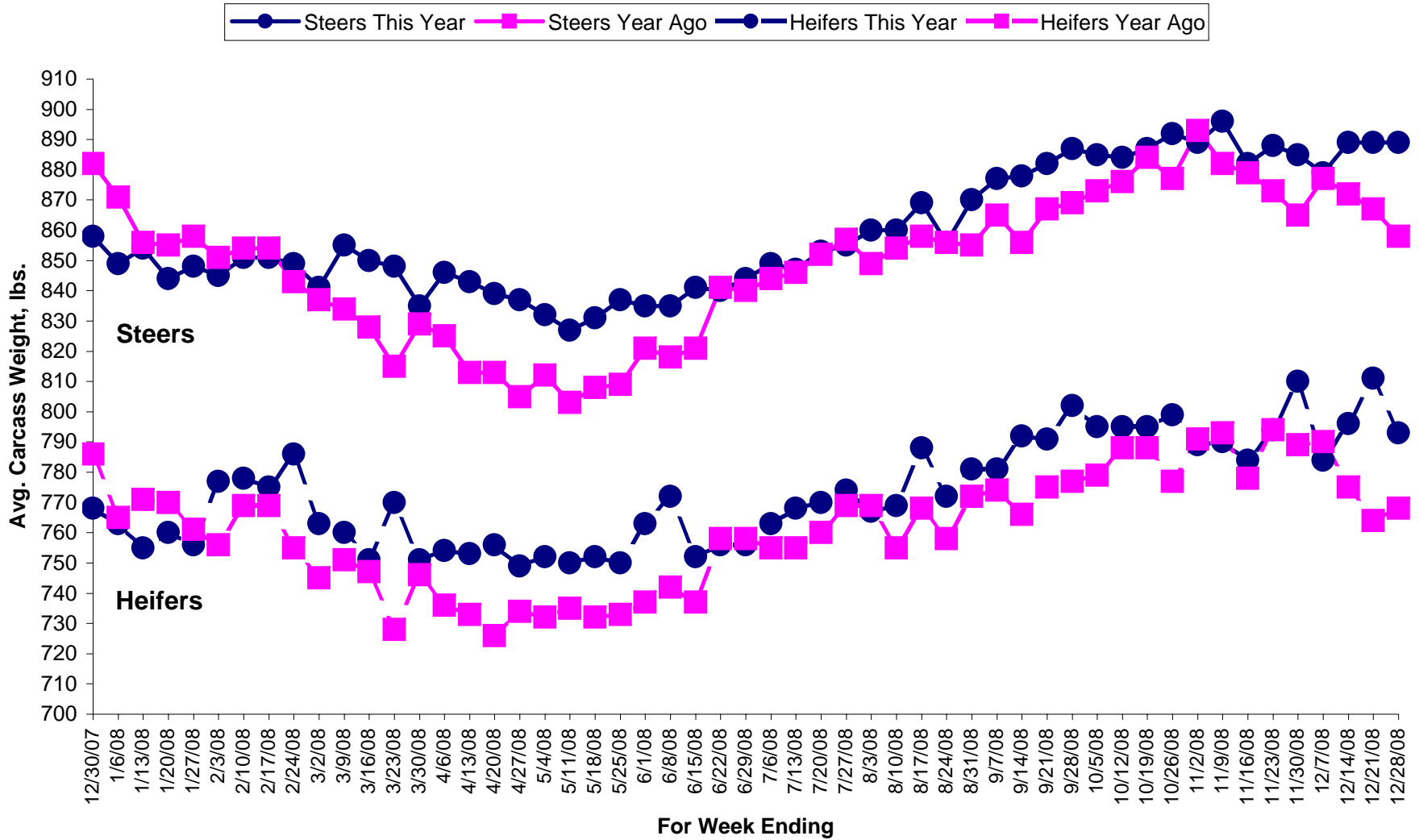
Source: 5 Area Weekly Weighted Average Direct Slaughter Cattle (Texas/Oklahoma, Kansas, Nebraska, Colorado, Iowa/Minnesota feedlots), USDA Market News Service.

Average Live Weight FOB



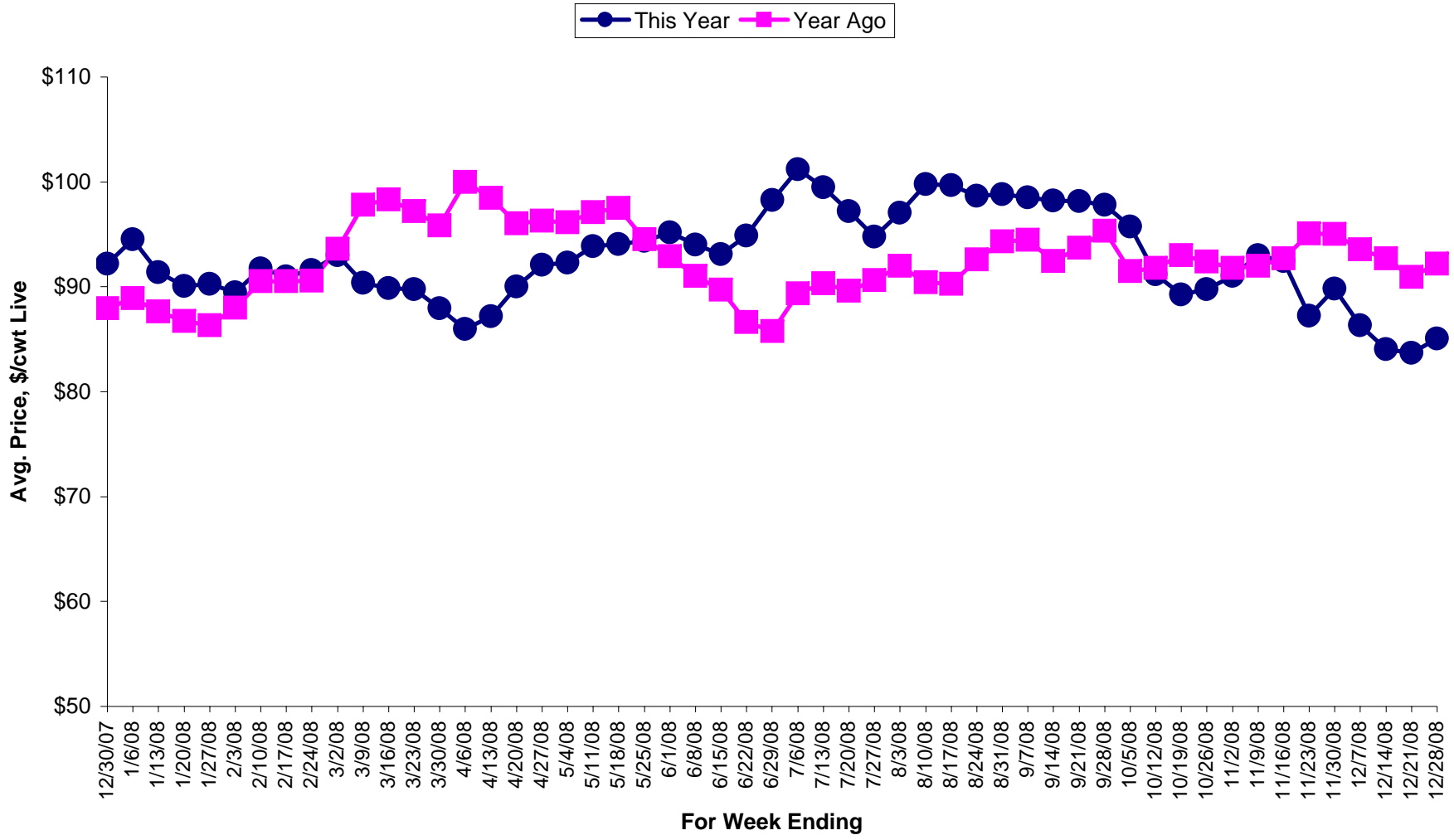
Source: 5 Area Weekly Weighted Average Direct Slaughter Cattle (Texas/Oklahoma, Kansas, Nebraska, Colorado, Iowa/Minnesota feedlots), USDA Market News Service.

Average Carcass Weight Dressed



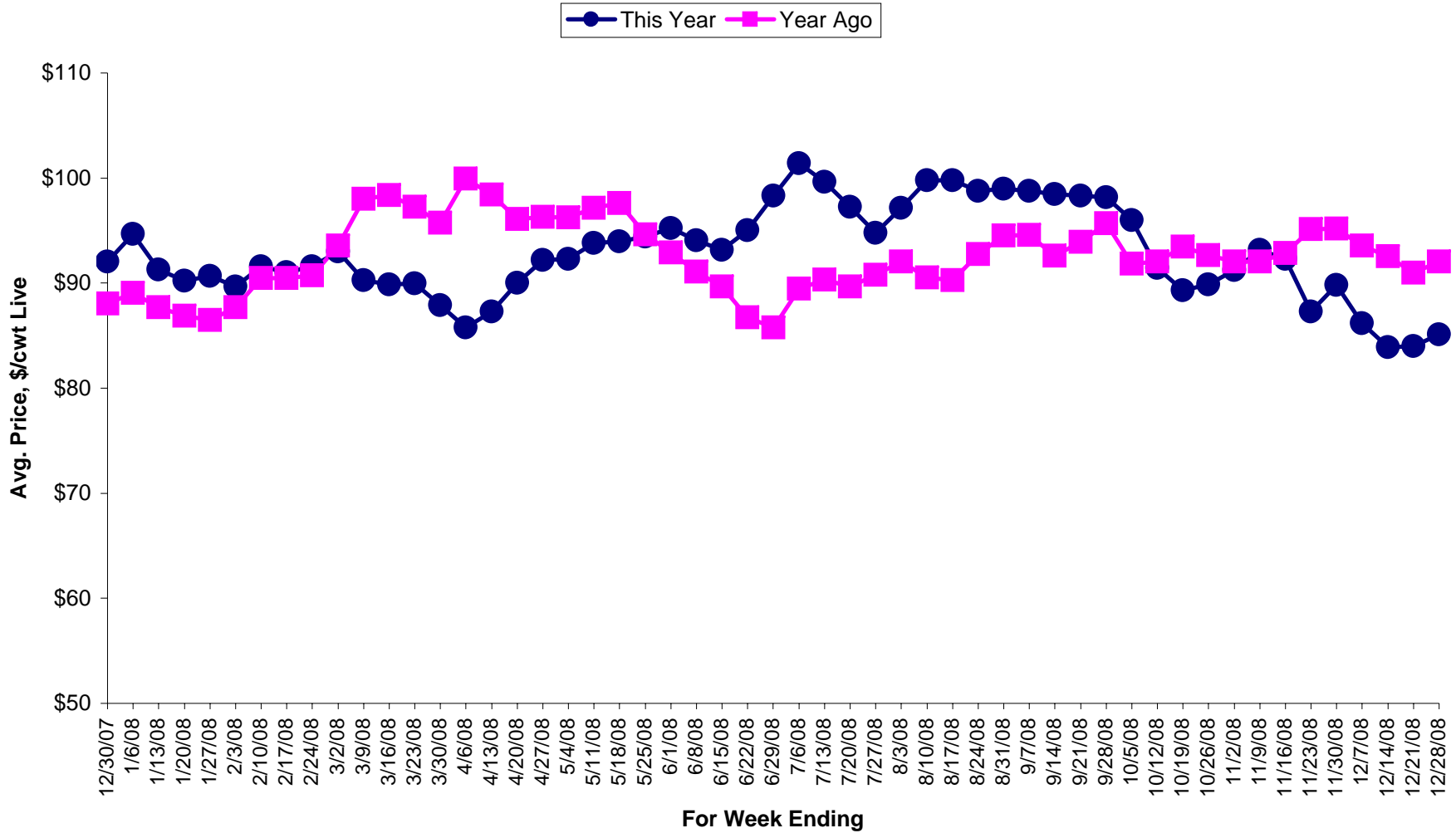
Source: 5 Area Weekly Weighted Average Direct Slaughter Cattle (Texas/Oklahoma, Kansas, Nebraska, Colorado, Iowa/Minnesota feedlots), USDA Market News Service.

Average Price \$/cwt Steers, Live FOB



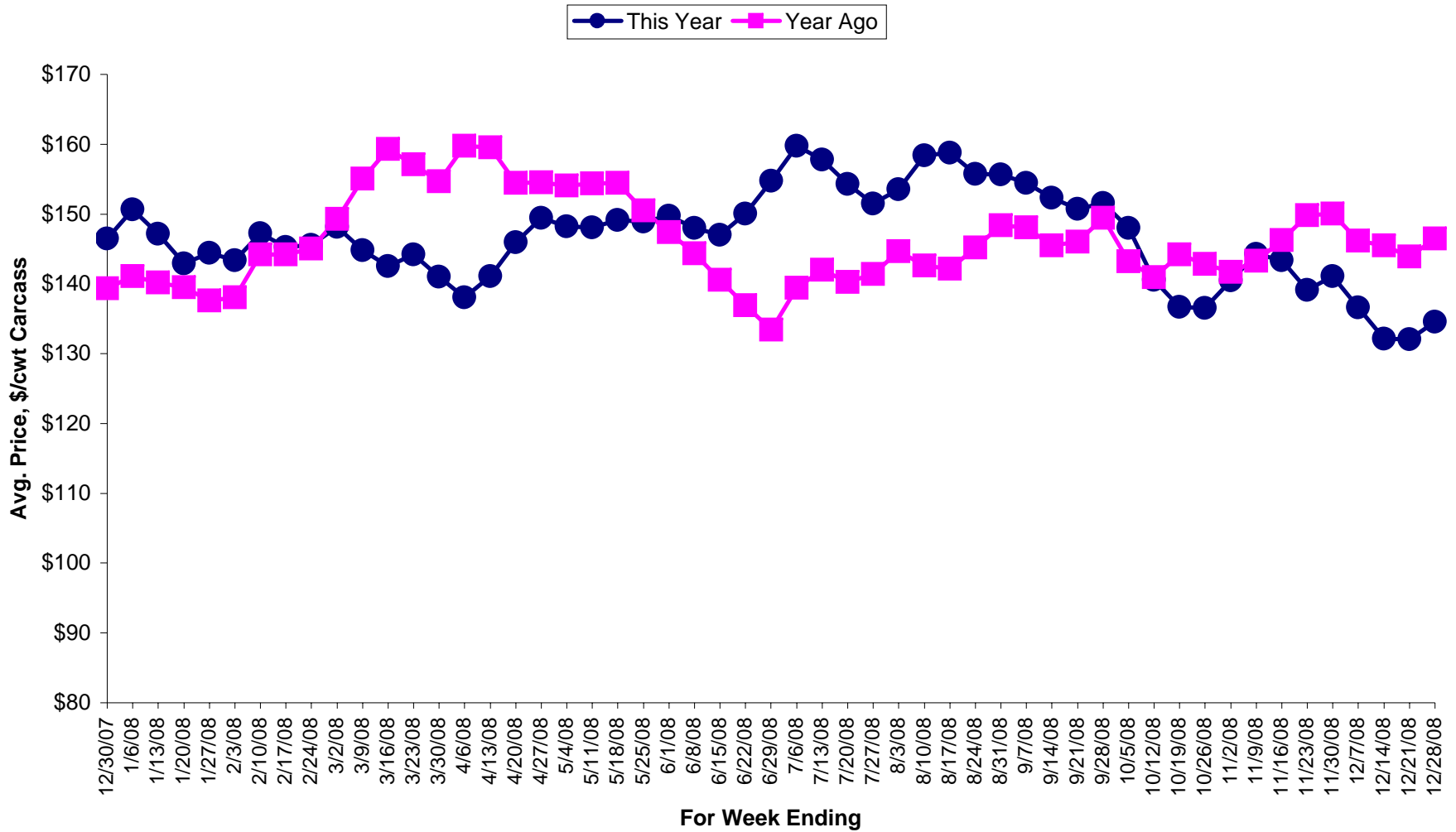
Source: 5 Area Weekly Weighted Average Direct Slaughter Cattle (Texas/Oklahoma, Kansas, Nebraska, Colorado, Iowa/Minnesota feedlots), USDA Market News Service.

Average Price \$/cwt Heifers, Live FOB



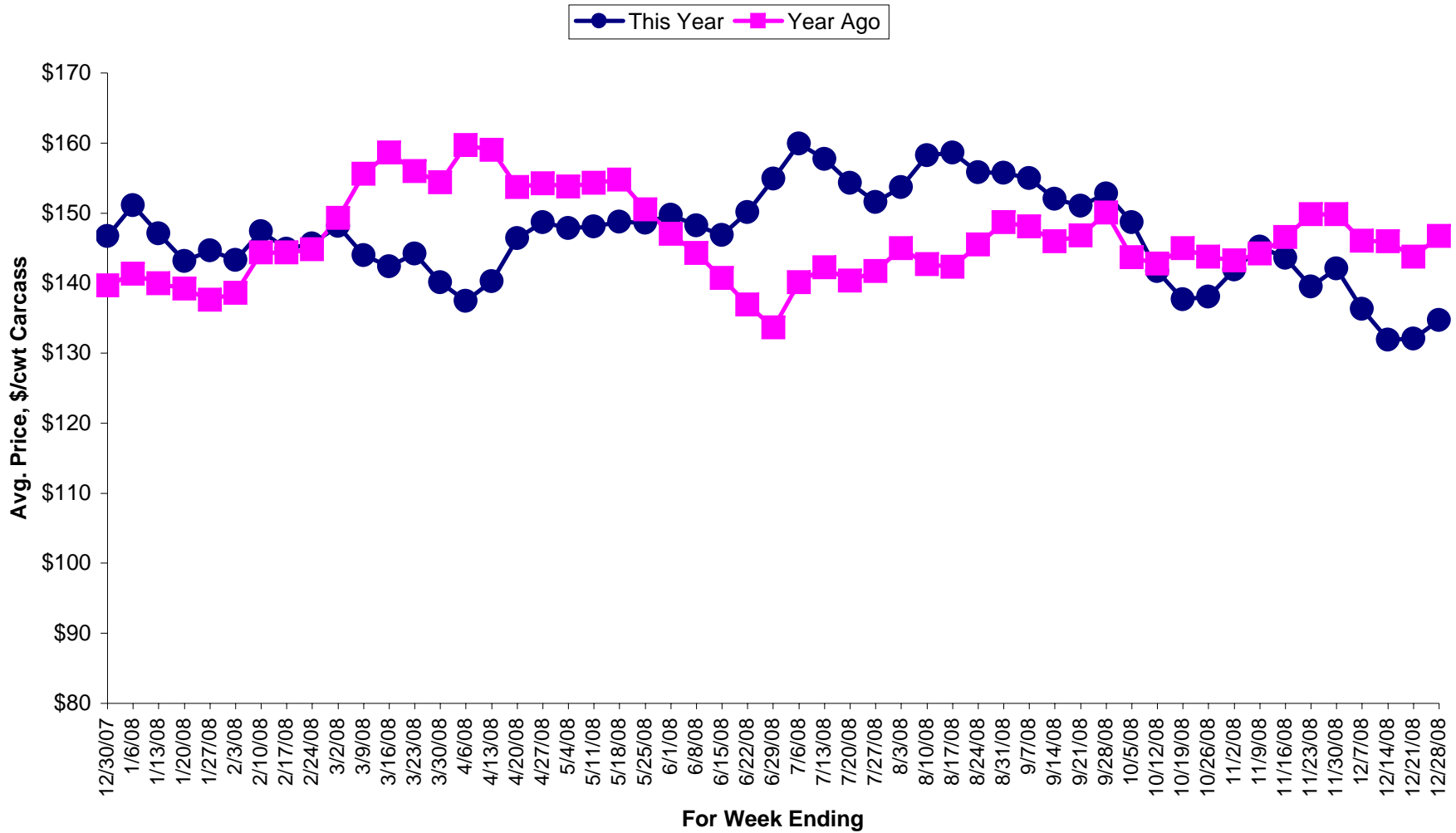
Source: 5 Area Weekly Weighted Average Direct Slaughter Cattle (Texas/Oklahoma, Kansas, Nebraska, Colorado, Iowa/Minnesota feedlots), USDA Market News Service.

Average Price \$/cwt Carcass Weight Basis Steers, Delivered



Source: 5 Area Weekly Weighted Average Direct Slaughter Cattle (Texas/Oklahoma, Kansas, Nebraska, Colorado, Iowa/Minnesota feedlots), USDA Market News Service.

Average Price \$/cwt Carcass Weight Basis Heifers, Delivered



Source: 5 Area Weekly Weighted Average Direct Slaughter Cattle (Texas/Oklahoma, Kansas, Nebraska, Colorado, Iowa/Minnesota feedlots), USDA Market News Service.

| Week Ending | Number Head of Finished Cattle Marketed Live FOB or Dressed Delivered, by Week | | | | | | | |
|-------------|--|----------|-----------------|----------|-------------------|----------|--------------------|----------|
| | Live FOB Steer | | Live FOB Heifer | | Dressed Del Steer | | Dressed Del Heifer | |
| | No. Head | No. Head | No. Head | No. Head | No. Head | No. Head | No. Head | |
| | This Year | Year Ago | This Year | Year Ago | This Year | Year Ago | This Year | Year Ago |
| 12/30/2007 | 43010 | 42335 | 34764 | 38177 | 36079 | 39246 | 27201 | 31511 |
| 1/6/2008 | 49518 | 32082 | 42875 | 24944 | 56412 | 13524 | 37876 | 11861 |
| 1/13/2008 | 31236 | 40170 | 17079 | 25068 | 25444 | 38383 | 23435 | 28669 |
| 1/20/2008 | 45058 | 42513 | 34098 | 33046 | 39872 | 31265 | 23826 | 26746 |
| 1/27/2008 | 30171 | 43467 | 19623 | 42892 | 39281 | 26811 | 32721 | 25981 |
| 2/3/2008 | 39158 | 49803 | 33988 | 46344 | 39973 | 30427 | 23533 | 21205 |
| 2/10/2008 | 49084 | 46292 | 32774 | 38322 | 48540 | 31824 | 29485 | 20902 |
| 2/17/2008 | 40327 | 46292 | 33225 | 38322 | 26200 | 31824 | 25648 | 20902 |
| 2/24/2008 | 45396 | 43784 | 35019 | 34544 | 41621 | 35408 | 29452 | 26659 |
| 3/2/2008 | 47135 | 67821 | 39281 | 51409 | 38744 | 43782 | 33313 | 31009 |
| 3/9/2008 | 30940 | 62565 | 25835 | 43913 | 33915 | 36407 | 27332 | 23926 |
| 3/16/2008 | 47494 | 56372 | 41345 | 38122 | 31734 | 38912 | 21988 | 30995 |
| 3/23/2008 | 26605 | 60082 | 28168 | 38811 | 44156 | 27172 | 26377 | 18457 |
| 3/30/2008 | 42459 | 50283 | 31997 | 27457 | 28728 | 24119 | 22476 | 22220 |
| 4/6/2008 | 45324 | 80782 | 28850 | 51776 | 38910 | 32497 | 29929 | 26223 |
| 4/13/2008 | 48134 | 45838 | 37251 | 25961 | 43631 | 27370 | 31079 | 19507 |
| 4/20/2008 | 55930 | 64817 | 37806 | 51408 | 30954 | 28867 | 23079 | 22919 |
| 4/27/2008 | 67644 | 67618 | 46741 | 40499 | 62037 | 38608 | 35124 | 23917 |
| 5/4/2008 | 54040 | 67967 | 43224 | 50255 | 49195 | 35615 | 26718 | 24532 |
| 5/11/2008 | 61664 | 81032 | 36091 | 46205 | 38414 | 38224 | 23585 | 26492 |
| 5/18/2008 | 49957 | 70976 | 35747 | 39134 | 39654 | 40751 | 22758 | 32579 |
| 5/25/2008 | 51218 | 42712 | 37318 | 29376 | 43159 | 28109 | 24011 | 22610 |
| 6/1/2008 | 44945 | 69218 | 29608 | 48166 | 45503 | 41419 | 29120 | 31918 |
| 6/8/2008 | 48862 | 50154 | 35325 | 33382 | 47665 | 45713 | 23888 | 29343 |
| 6/15/2008 | 59606 | 50293 | 41354 | 39603 | 40168 | 36566 | 21797 | 18700 |
| 6/22/2008 | 37985 | 36923 | 25696 | 24901 | 50759 | 29827 | 28369 | 21914 |
| 6/29/2008 | 77148 | 49897 | 50093 | 35036 | 36442 | 30041 | 25190 | 25055 |
| 7/6/2008 | 57877 | 67110 | 40063 | 44649 | 55766 | 56492 | 33135 | 33502 |
| 7/13/2008 | 36097 | 56604 | 27897 | 33808 | 32186 | 46882 | 20677 | 21790 |
| 7/20/2008 | 44037 | 67397 | 32805 | 48701 | 40442 | 40443 | 27544 | 22556 |
| 7/27/2008 | 31857 | 58391 | 18072 | 45088 | 28613 | 45474 | 17462 | 27886 |
| 8/3/2008 | 40343 | 61730 | 31211 | 46186 | 39553 | 46345 | 28951 | 30709 |
| 8/10/2008 | 52054 | 53228 | 46882 | 40843 | 46198 | 29056 | 27706 | 20554 |
| 8/17/2008 | 36426 | 58784 | 27305 | 53734 | 41242 | 37847 | 24413 | 23818 |
| 8/24/2008 | 46707 | 76601 | 35761 | 54123 | 34484 | 43294 | 24581 | 24142 |
| 8/31/2008 | 41168 | 73154 | 38485 | 54970 | 40902 | 26037 | 25815 | 24820 |
| 9/7/2008 | 44722 | 44192 | 37605 | 31176 | 36006 | 16707 | 15475 | 8304 |
| 9/14/2008 | 46693 | 31306 | 36977 | 15427 | 37053 | 23835 | 18941 | 21064 |
| 9/21/2008 | 44486 | 84236 | 40621 | 52545 | 28717 | 40323 | 15159 | 28325 |
| 9/28/2008 | 62780 | 65247 | 39515 | 58218 | 33815 | 38043 | 21461 | 26418 |
| 10/5/2008 | 36501 | 31660 | 31823 | 24356 | 28319 | 14650 | 16773 | 10830 |
| 10/12/2008 | 41652 | 64184 | 32494 | 56166 | 22438 | 31758 | 18374 | 22784 |
| 10/19/2008 | 50366 | 61489 | 41140 | 71427 | 27973 | 47131 | 22739 | 28925 |
| 10/26/2008 | 40496 | 45862 | 32823 | 41178 | 25771 | 24212 | 24846 | 15178 |
| 11/2/2008 | 47231 | 48378 | 51232 | 37896 | 23187 | 32629 | 17272 | 26671 |
| 11/9/2008 | 43563 | 28491 | 36750 | 27650 | 31750 | 31040 | 26104 | 20299 |
| 11/16/2008 | 42443 | 71097 | 34546 | 59200 | 33975 | 26010 | 24579 | 22061 |
| 11/23/2008 | 42112 | 51840 | 30356 | 49073 | 27754 | 33873 | 22741 | 25416 |
| 11/30/2008 | 47736 | 57860 | 38823 | 52069 | 30051 | 26092 | 17811 | 26072 |

Source: 5 Area Weekly Weighted Average Direct Slaughter Cattle (Texas/Oklahoma, Kansas, Nebraska, Colorado, Iowa/Minnesota feedlots), USDA Market News Service.

| Number Head of Finished Cattle Marketed Live FOB or Dressed Delivered, by Week | | | | | | | | |
|--|-----------------|----------|-----------------|----------|-------------------|----------|--------------------|----------|
| Week Ending | Live FOB Steer | | Live FOB Heifer | | Dressed Del Steer | | Dressed Del Heifer | |
| | <u>No. Head</u> | | <u>No. Head</u> | | <u>No. Head</u> | | <u>No. Head</u> | |
| | This Year | Year Ago | This Year | Year Ago | This Year | Year Ago | This Year | Year Ago |
| 12/7/2008 | 31737 | 31669 | 32041 | 30428 | 25512 | 17102 | 20483 | 11981 |
| 12/14/2008 | 28361 | 43050 | 26172 | 29837 | 23987 | 38506 | 15707 | 31084 |
| 12/21/2008 | 26816 | 35875 | 22273 | 28767 | 27120 | 31602 | 23127 | 23635 |
| 12/28/2008 | 36618 | 43010 | 27120 | 34764 | 31672 | 36079 | 22067 | 27201 |

Source: 5 Area Weekly Weighted Average Direct Slaughter Cattle (Texas/Oklahoma, Kansas, Nebraska, Colorado, Iowa/Minnesota feedlots), USDA Market News Service.

Average Weights for Finished Cattle Sold Live FOB or Dressed Delivered, by Week

| Week Ending | Live FOB Steer | | Live FOB Heifer | | Dressed Del Steer | | Dressed Del Heifer | |
|-------------|----------------|----------|-----------------|----------|-------------------|----------|--------------------|----------|
| | Avg Weight | | Avg Weight | | Avg Weight | | Avg Weight | |
| | This Year | Year Ago | This Year | Year Ago | This Year | Year Ago | This Year | Year Ago |
| 12/30/2007 | 1330 | 1334 | 1202 | 1227 | 858 | 882 | 768 | 786 |
| 1/6/2008 | 1320 | 1321 | 1189 | 1195 | 849 | 871 | 763 | 765 |
| 1/13/2008 | 1303 | 1329 | 1191 | 1216 | 854 | 856 | 755 | 771 |
| 1/20/2008 | 1306 | 1318 | 1183 | 1200 | 844 | 855 | 760 | 770 |
| 1/27/2008 | 1304 | 1299 | 1171 | 1188 | 848 | 858 | 756 | 761 |
| 2/3/2008 | 1312 | 1295 | 1178 | 1195 | 845 | 851 | 777 | 756 |
| 2/10/2008 | 1303 | 1295 | 1197 | 1197 | 851 | 854 | 778 | 769 |
| 2/17/2008 | 1308 | 1295 | 1182 | 1197 | 851 | 854 | 775 | 769 |
| 2/24/2008 | 1296 | 1283 | 1188 | 1183 | 849 | 843 | 786 | 755 |
| 3/2/2008 | 1297 | 1282 | 1197 | 1176 | 841 | 837 | 763 | 745 |
| 3/9/2008 | 1295 | 1282 | 1191 | 1173 | 855 | 834 | 760 | 751 |
| 3/16/2008 | 1295 | 1270 | 1160 | 1186 | 850 | 828 | 751 | 747 |
| 3/23/2008 | 1307 | 1261 | 1211 | 1157 | 848 | 815 | 770 | 728 |
| 3/30/2008 | 1288 | 1278 | 1177 | 1142 | 835 | 829 | 751 | 746 |
| 4/6/2008 | 1282 | 1260 | 1167 | 1143 | 846 | 825 | 754 | 736 |
| 4/13/2008 | 1277 | 1241 | 1175 | 1140 | 843 | 813 | 753 | 733 |
| 4/20/2008 | 1268 | 1255 | 1155 | 1139 | 839 | 813 | 756 | 726 |
| 4/27/2008 | 1275 | 1242 | 1162 | 1137 | 837 | 805 | 749 | 734 |
| 5/4/2008 | 1270 | 1248 | 1154 | 1132 | 832 | 812 | 752 | 732 |
| 5/11/2008 | 1272 | 1251 | 1149 | 1135 | 827 | 803 | 750 | 735 |
| 5/18/2008 | 1269 | 1256 | 1153 | 1140 | 831 | 808 | 752 | 732 |
| 5/25/2008 | 1269 | 1258 | 1155 | 1140 | 837 | 809 | 750 | 733 |
| 6/1/2008 | 1278 | 1267 | 1165 | 1154 | 835 | 821 | 763 | 737 |
| 6/8/2008 | 1279 | 1259 | 1160 | 1147 | 835 | 818 | 772 | 742 |
| 6/15/2008 | 1288 | 1275 | 1151 | 1161 | 841 | 821 | 752 | 737 |
| 6/22/2008 | 1315 | 1284 | 1179 | 1154 | 840 | 841 | 756 | 758 |
| 6/29/2008 | 1300 | 1303 | 1175 | 1171 | 844 | 840 | 756 | 758 |
| 7/6/2008 | 1326 | 1305 | 1188 | 1169 | 849 | 844 | 763 | 755 |
| 7/13/2008 | 1312 | 1303 | 1189 | 1184 | 847 | 846 | 768 | 755 |
| 7/20/2008 | 1320 | 1310 | 1184 | 1172 | 853 | 852 | 770 | 760 |
| 7/27/2008 | 1328 | 1318 | 1189 | 1183 | 855 | 857 | 774 | 769 |
| 8/3/2008 | 1320 | 1324 | 1187 | 1184 | 860 | 849 | 767 | 769 |
| 8/10/2008 | 1336 | 1320 | 1204 | 1183 | 860 | 854 | 769 | 755 |
| 8/17/2008 | 1338 | 1330 | 1196 | 1187 | 869 | 858 | 788 | 768 |
| 8/24/2008 | 1337 | 1323 | 1202 | 1192 | 856 | 856 | 772 | 758 |
| 8/31/2008 | 1328 | 1326 | 1198 | 1199 | 870 | 855 | 781 | 772 |
| 9/7/2008 | 1342 | 1336 | 1190 | 1200 | 877 | 865 | 781 | 774 |
| 9/14/2008 | 1339 | 1365 | 1202 | 1209 | 878 | 856 | 792 | 766 |
| 9/21/2008 | 1331 | 1340 | 1202 | 1203 | 882 | 867 | 791 | 775 |
| 9/28/2008 | 1369 | 1340 | 1224 | 1198 | 887 | 869 | 802 | 777 |
| 10/5/2008 | 1344 | 1348 | 1212 | 1199 | 885 | 873 | 795 | 779 |
| 10/12/2008 | 1343 | 1345 | 1215 | 1206 | 884 | 876 | 795 | 788 |
| 10/19/2008 | 1340 | 1360 | 1210 | 1213 | 887 | 884 | 795 | 788 |
| 10/26/2008 | 1342 | 1337 | 1212 | 1205 | 892 | 877 | 799 | 777 |
| 11/2/2008 | 1345 | 1351 | 1206 | 1216 | 889 | 893 | 789 | 791 |
| 11/9/2008 | 1336 | 1353 | 1207 | 1238 | 896 | 882 | 790 | 793 |
| 11/16/2008 | 1303 | 1348 | 1213 | 1214 | 882 | 879 | 784 | 778 |
| 11/23/2008 | 1325 | 1341 | 1193 | 1218 | 888 | 873 | 794 | 794 |
| 11/30/2008 | 1320 | 1336 | 1202 | 1207 | 885 | 865 | 810 | 789 |

Source: 5 Area Weekly Weighted Average Direct Slaughter Cattle (Texas/Oklahoma, Kansas, Nebraska, Colorado, Iowa/Minnesota feedlots), USDA Market News Service.

Average Weights for Finished Cattle Sold Live FOB or Dressed Delivered, by Week

| Week Ending | Live FOB Steer | | Live FOB Heifer | | Dressed Del Steer | | Dressed Del Heifer | |
|-------------|-------------------|----------|-------------------|----------|-------------------|----------|--------------------|----------|
| | <u>Avg Weight</u> | | <u>Avg Weight</u> | | <u>Avg Weight</u> | | <u>Avg Weight</u> | |
| | This Year | Year Ago | This Year | Year Ago | This Year | Year Ago | This Year | Year Ago |
| 12/7/2008 | 1311 | 1339 | 1186 | 1204 | 879 | 877 | 784 | 790 |
| 12/14/2008 | 1332 | 1331 | 1205 | 1200 | 889 | 872 | 796 | 775 |
| 12/21/2008 | 1340 | 1345 | 1199 | 1204 | 889 | 867 | 811 | 764 |
| 12/28/2008 | 1342 | 1330 | 1237 | 1202 | 889 | 858 | 793 | 768 |

Source: 5 Area Weekly Weighted Average Direct Slaughter Cattle (Texas/Oklahoma, Kansas, Nebraska, Colorado, Iowa/Minnesota feedlots), USDA Market News Service.

Average Prices Paid for Finished Cattle Sold Live FOB or Dressed Delivered, by Week

| Week Ending | Live FOB Steer | | Live FOB Heifer | | Dressed Del Steer | | Dressed Del Heifer | |
|-------------|----------------|----------|-----------------|----------|-------------------|----------|--------------------|----------|
| | Avg Price | | Avg Price | | Avg Price | | Avg Price | |
| | This Year | Year Ago | This Year | Year Ago | This Year | Year Ago | This Year | Year Ago |
| 12/30/2007 | \$92.21 | \$87.94 | \$92.06 | \$88.03 | \$146.47 | \$139.31 | \$146.73 | \$139.64 |
| 1/6/2008 | \$94.53 | \$88.88 | \$94.65 | \$89.07 | \$150.66 | \$141.11 | \$151.09 | \$141.33 |
| 1/13/2008 | \$91.40 | \$87.66 | \$91.29 | \$87.70 | \$147.18 | \$140.20 | \$147.10 | \$139.95 |
| 1/20/2008 | \$90.09 | \$86.73 | \$90.21 | \$86.88 | \$142.92 | \$139.52 | \$143.12 | \$139.16 |
| 1/27/2008 | \$90.29 | \$86.33 | \$90.68 | \$86.46 | \$144.39 | \$137.58 | \$144.66 | \$137.60 |
| 2/3/2008 | \$89.47 | \$88.00 | \$89.67 | \$87.67 | \$143.34 | \$138.04 | \$143.28 | \$138.61 |
| 2/10/2008 | \$91.73 | \$90.53 | \$91.56 | \$90.47 | \$147.21 | \$144.22 | \$147.36 | \$144.38 |
| 2/17/2008 | \$91.00 | \$90.53 | \$91.01 | \$90.47 | \$145.28 | \$144.22 | \$144.90 | \$144.38 |
| 2/24/2008 | \$91.59 | \$90.58 | \$91.57 | \$90.71 | \$145.58 | \$145.03 | \$145.65 | \$144.84 |
| 3/2/2008 | \$93.00 | \$93.63 | \$93.02 | \$93.54 | \$148.11 | \$149.28 | \$148.18 | \$149.30 |
| 3/9/2008 | \$90.36 | \$97.79 | \$90.27 | \$98.03 | \$144.77 | \$155.07 | \$143.95 | \$155.60 |
| 3/16/2008 | \$89.85 | \$98.32 | \$89.84 | \$98.35 | \$142.52 | \$159.33 | \$142.37 | \$158.63 |
| 3/23/2008 | \$89.77 | \$97.19 | \$89.95 | \$97.26 | \$144.17 | \$157.07 | \$144.23 | \$155.93 |
| 3/30/2008 | \$87.93 | \$95.86 | \$87.91 | \$95.71 | \$141.00 | \$154.67 | \$140.08 | \$154.35 |
| 4/6/2008 | \$85.95 | \$99.97 | \$85.76 | \$99.95 | \$138.09 | \$159.75 | \$137.44 | \$159.68 |
| 4/13/2008 | \$87.16 | \$98.45 | \$87.26 | \$98.42 | \$141.07 | \$159.51 | \$140.29 | \$158.99 |
| 4/20/2008 | \$90.00 | \$96.06 | \$90.01 | \$96.07 | \$145.92 | \$154.46 | \$146.39 | \$153.70 |
| 4/27/2008 | \$92.11 | \$96.29 | \$92.19 | \$96.27 | \$149.44 | \$154.49 | \$148.69 | \$154.24 |
| 5/4/2008 | \$92.27 | \$96.15 | \$92.28 | \$96.22 | \$148.25 | \$154.09 | \$147.83 | \$153.74 |
| 5/11/2008 | \$93.86 | \$97.08 | \$93.81 | \$97.14 | \$148.08 | \$154.33 | \$148.04 | \$154.29 |
| 5/18/2008 | \$94.06 | \$97.50 | \$93.96 | \$97.63 | \$149.16 | \$154.44 | \$148.77 | \$154.74 |
| 5/25/2008 | \$94.38 | \$94.54 | \$94.40 | \$94.63 | \$148.89 | \$150.53 | \$148.61 | \$150.47 |
| 6/1/2008 | \$95.18 | \$92.89 | \$95.24 | \$92.88 | \$149.75 | \$147.35 | \$149.74 | \$146.97 |
| 6/8/2008 | \$94.00 | \$91.04 | \$94.07 | \$91.09 | \$148.02 | \$144.34 | \$148.23 | \$144.26 |
| 6/15/2008 | \$93.11 | \$89.69 | \$93.16 | \$89.68 | \$147.02 | \$140.55 | \$146.86 | \$140.73 |
| 6/22/2008 | \$94.88 | \$86.62 | \$95.04 | \$86.74 | \$150.05 | \$136.88 | \$150.10 | \$136.92 |
| 6/29/2008 | \$98.28 | \$85.78 | \$98.33 | \$85.75 | \$154.72 | \$133.40 | \$154.90 | \$133.63 |
| 7/6/2008 | \$101.18 | \$89.37 | \$101.39 | \$89.46 | \$159.72 | \$139.39 | \$159.92 | \$140.11 |
| 7/13/2008 | \$99.50 | \$90.31 | \$99.61 | \$90.33 | \$157.78 | \$141.97 | \$157.70 | \$142.24 |
| 7/20/2008 | \$97.21 | \$89.61 | \$97.25 | \$89.65 | \$154.26 | \$140.23 | \$154.32 | \$140.35 |
| 7/27/2008 | \$94.79 | \$90.63 | \$94.79 | \$90.80 | \$151.46 | \$141.39 | \$151.53 | \$141.66 |
| 8/3/2008 | \$97.04 | \$91.97 | \$97.15 | \$92.04 | \$153.53 | \$144.69 | \$153.72 | \$144.99 |
| 8/10/2008 | \$99.77 | \$90.41 | \$99.80 | \$90.51 | \$158.41 | \$142.64 | \$158.24 | \$142.69 |
| 8/17/2008 | \$99.70 | \$90.25 | \$99.79 | \$90.25 | \$158.74 | \$142.15 | \$158.63 | \$142.28 |
| 8/24/2008 | \$98.66 | \$92.61 | \$98.79 | \$92.76 | \$155.70 | \$145.19 | \$155.78 | \$145.46 |
| 8/31/2008 | \$98.81 | \$94.33 | \$98.96 | \$94.50 | \$155.65 | \$148.41 | \$155.75 | \$148.66 |
| 9/7/2008 | \$98.54 | \$94.48 | \$98.78 | \$94.59 | \$154.43 | \$148.09 | \$155.01 | \$148.05 |
| 9/14/2008 | \$98.21 | \$92.43 | \$98.46 | \$92.61 | \$152.33 | \$145.52 | \$152.00 | \$145.97 |
| 9/21/2008 | \$98.17 | \$93.71 | \$98.30 | \$93.89 | \$150.72 | \$146.01 | \$151.02 | \$146.77 |
| 9/28/2008 | \$97.81 | \$95.33 | \$98.16 | \$95.70 | \$151.54 | \$149.40 | \$152.79 | \$150.03 |
| 10/5/2008 | \$95.74 | \$91.47 | \$96.00 | \$91.83 | \$147.99 | \$143.23 | \$148.66 | \$143.68 |
| 10/12/2008 | \$91.19 | \$91.80 | \$91.45 | \$92.02 | \$140.56 | \$140.92 | \$141.73 | \$142.76 |
| 10/19/2008 | \$89.26 | \$93.02 | \$89.29 | \$93.46 | \$136.69 | \$144.17 | \$137.67 | \$144.98 |
| 10/26/2008 | \$89.77 | \$92.41 | \$89.85 | \$92.63 | \$136.55 | \$142.86 | \$138.09 | \$143.75 |
| 11/2/2008 | \$91.05 | \$91.77 | \$91.24 | \$92.06 | \$140.51 | \$141.71 | \$141.92 | \$143.21 |
| 11/9/2008 | \$93.02 | \$92.00 | \$93.13 | \$92.02 | \$144.29 | \$143.31 | \$145.17 | \$144.17 |
| 11/16/2008 | \$92.46 | \$92.68 | \$92.29 | \$92.85 | \$143.34 | \$146.24 | \$143.62 | \$146.55 |
| 11/23/2008 | \$87.23 | \$95.09 | \$87.28 | \$95.12 | \$139.08 | \$149.85 | \$139.49 | \$149.85 |
| 11/30/2008 | \$89.82 | \$95.03 | \$89.80 | \$95.20 | \$141.06 | \$150.04 | \$142.06 | \$149.84 |

Source: 5 Area Weekly Weighted Average Direct Slaughter Cattle (Texas/Oklahoma, Kansas, Nebraska, Colorado, Iowa/Minnesota feedlots), USDA Market News Service.

Average Prices Paid for Finished Cattle Sold Live FOB or Dressed Delivered, by Week

| Week Ending | Live FOB Steer | | Live FOB Heifer | | Dressed Del Steer | | Dressed Del Heifer | |
|-------------|------------------|----------|------------------|----------|-------------------|----------|--------------------|----------|
| | <u>Avg Price</u> | | <u>Avg Price</u> | | <u>Avg Price</u> | | <u>Avg Price</u> | |
| | This Year | Year Ago | This Year | Year Ago | This Year | Year Ago | This Year | Year Ago |
| 12/7/2008 | \$86.30 | \$93.54 | \$86.18 | \$93.57 | \$136.60 | \$146.16 | \$136.34 | \$146.02 |
| 12/14/2008 | \$84.03 | \$92.68 | \$83.90 | \$92.56 | \$132.12 | \$145.48 | \$131.91 | \$145.92 |
| 12/21/2008 | \$83.67 | \$90.94 | \$84.02 | \$90.97 | \$132.05 | \$143.87 | \$132.05 | \$143.78 |
| 12/28/2008 | \$85.07 | \$92.21 | \$85.09 | \$92.06 | \$134.59 | \$146.47 | \$134.72 | \$146.73 |

Source: 5 Area Weekly Weighted Average Direct Slaughter Cattle (Texas/Oklahoma, Kansas, Nebraska, Colorado, Iowa/Minnesota feedlots), USDA Market News Service.